

FLORIDA DEPARTMENT OF ENVIRONMENTAL PROTECTION

CERTIFIED CORNER RECORD

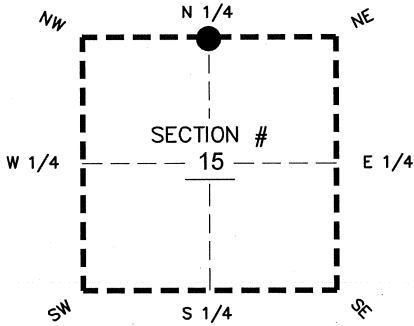
64

DOC. # _____
 BLM. # T43SR26E440500

CORNER DESCRIPTION: **MONUMENTATION DESCRIPTION (EVIDENCE FOUND OR METHOD TO SET)**

Depict corner with

FOUND 3.5"x3.5" CONCRETE MONUMENT WITH ALUMINUM DISK
 STAMPED STARNES & ASSOCIATES PLS 2465
 PROJECTS 1.3' ABOVE GROUND



N 1/4 corner of Section 15
 Twp 43 S, Rge 26 E
 Tallahassee Base Meridian,
 LEE County(s), Florida

PRIOR CCR'S:

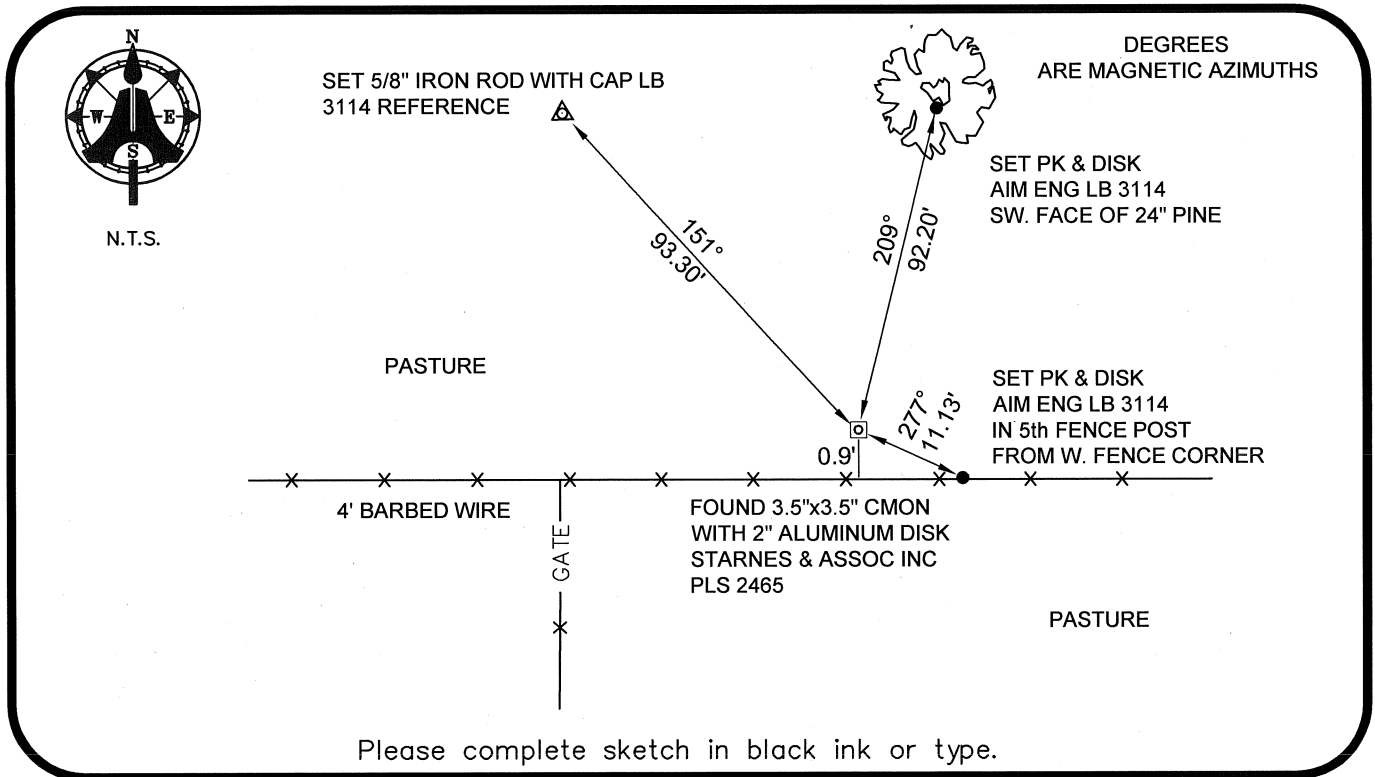
DOC. # 0035210, 0036588

HORIZONTAL POSITION INFORMATION (if determined):

Latitude 26°44'23.4178" N Longitude 81°42'16.3226" W
 Y(NORTHING-Ft.) 874714.60 X(EASTING-Ft.) 752596.84 Zone WEST
 Convergence 00°07'58.6" Scale factor 0.99995184

Coordinate determination: GPS
 Horizontal datum: NAD83(NSRS2007)

Accuracy (circle one): 1st 2nd 3rd other 1:35,000



Please complete sketch in black ink or type.

SURVEYORS CERTIFICATE:

I certify the monument and accessories indicated above were field located on 03-14-2008

BEN R. HOMOLA

Ben R. Homola 3950
SIGNATURE

AIM ENGINEERING & SURVEYING, INC. 3114
FIRM OR AGENCY PSM NO. LB NO.

5300 LEE BOULEVARD
ADDRESS FL 33971

LEHIGH ACRES CITY STATE ZIP
 (239)332-4569 07/30/2008 DATE

EMBOSSSED SEAL OVER SIGNATURE

SEND ORIGINAL TO:
 Department of Environmental Protection
 Bureau of Surveying and Mapping
 3900 Commonwealth Boulevard
 Mail Station 105
 Tallahassee, Florida 32399

D.E.P. USE ONLY	
Processed: _____	_____
B.L.M. - I.D. _____	_____
QUAD - I.D. _____	_____