

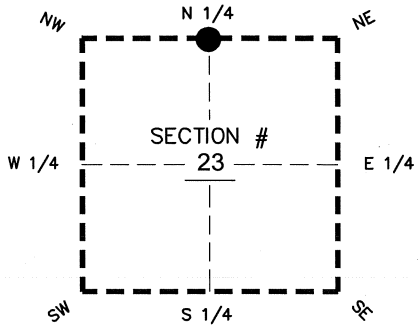
# FLORIDA DEPARTMENT OF ENVIRONMENTAL PROTECTION CERTIFIED CORNER RECORD

DOC. # \_\_\_\_\_  
BLM. # T43SR26E540400

## CORNER DESCRIPTION: MONUMENTATION DESCRIPTION (EVIDENCE FOUND OR METHOD TO SET)

Depict corner with ●

FOUND 4" X 4" CONCRETE MONUMENT WITH 3/8" IRON ROD FLUSH WITH GROUND



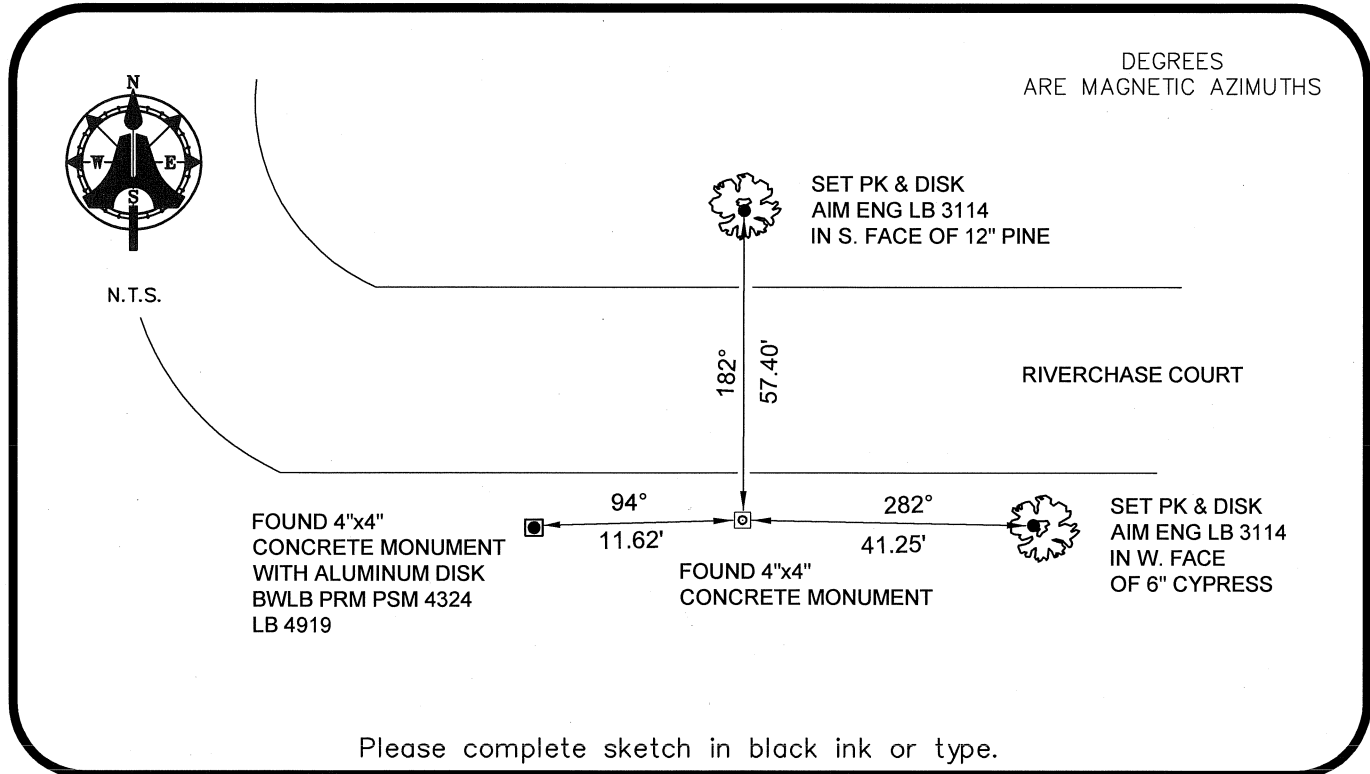
### PRIOR CCR'S:

DOC. # 0028762, 0045235

### HORIZONTAL POSITION INFORMATION ( if determined ):

Latitude 26°43'29.9518" N Longitude 81°41'18.7562" W  
 Y(NORTHING-Ft.) 869328.52 X(EASTING-Ft.) 757828.89 Zone WEST  
 Convergence 00°08'24.2" Scale factor 0.99995303  
 Coordinate determination: GPS  
 Horizontal datum: NAD83(NSRS2007)  
 Accuracy (circle one): 1st 2nd 3rd other 1:35,000

N 1/4 corner of Section 23  
 Twp 43 S, Rge 26 E  
 Tallahassee Base Meridian,  
LEE County(s), Florida



Please complete sketch in black ink or type.

### SURVEYORS CERTIFICATE:

I certify the monument and accessories indicated above were field located on 02-22-2008

BEN R. HOMOLA

*Ben R. Homola* 3950  
 SIGNATURE PSM NO.

AIM ENGINEERING & SURVEYING, INC. 3114  
 FIRM OR AGENCY LB NO.

5300 LEE BOULEVARD  
 ADDRESS

LEHIGH ACRES FL 33971

(239)332-4569 CITY PHONE NUMBER

07/30/2008 STATE DATE

EMBOSSSED SEAL OVER SIGNATURE

SEND ORIGINAL TO:  
 Department of Environmental Protection  
 Bureau of Surveying and Mapping  
 3900 Commonwealth Boulevard  
 Mail Station 105  
 Tallahassee, Florida 32399

D.E.P. USE ONLY	
Processed:	_____
B.L.M. - I.D.	_____
QUAD - I.D.	_____