

FLORIDA DEPARTMENT OF ENVIRONMENTAL PROTECTION

CERTIFIED CORNER RECORD

77

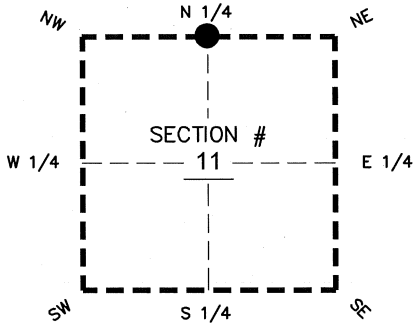
DOC. # _____

BLM. # T43SR26E540600

CORNER DESCRIPTION: **MONUMENTATION DESCRIPTION (EVIDENCE FOUND OR METHOD TO SET)**

Depict corner with

FOUND 3/4" IRON PIPE
0.2' BELOW GROUND



N 1/4 corner of Section 11
Twp 43 S, Rge 26 E
Tallahassee Base Meridian,
LEE County(s), Florida

PRIOR CCR'S:

DOC. # 020878, 089423

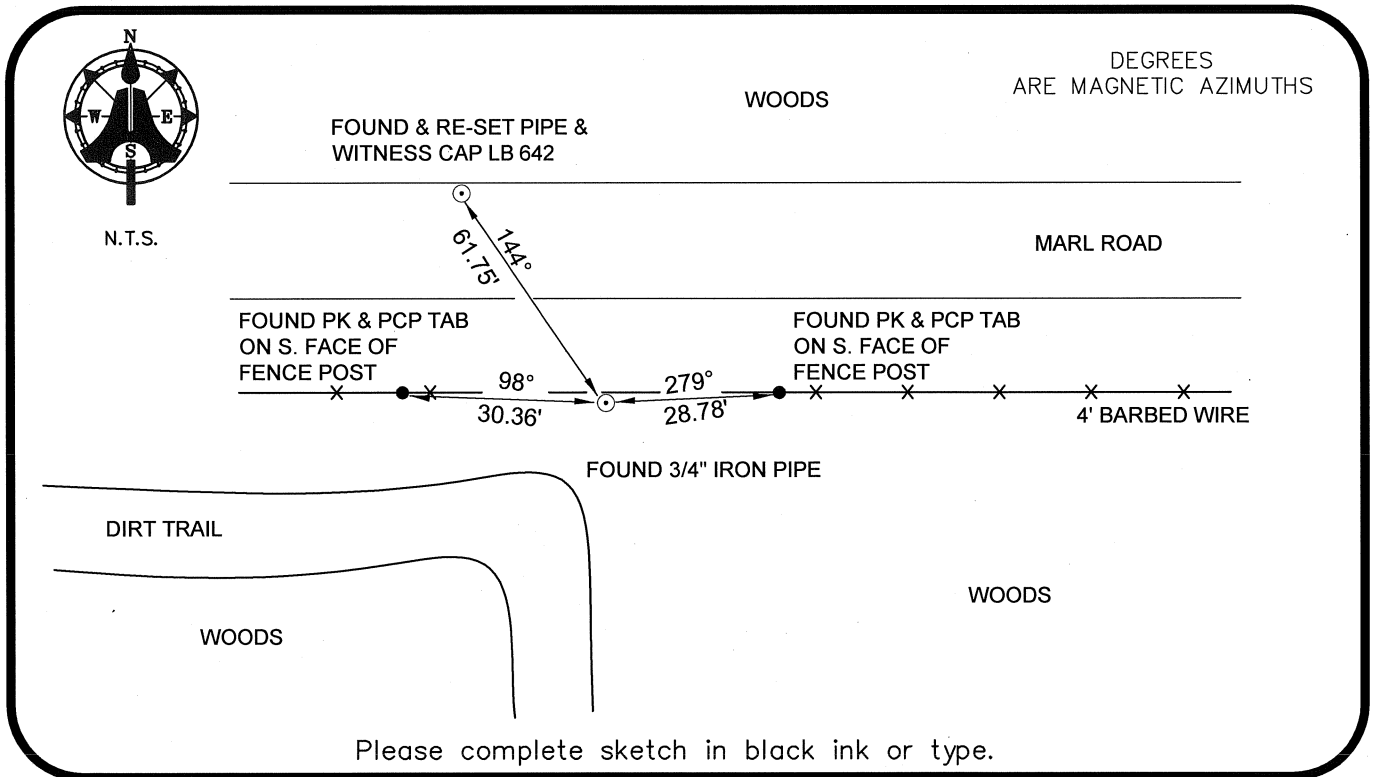
HORIZONTAL POSITION INFORMATION (if determined):

Latitude 26°45'15.4688" N Longitude 81°41'17.3660" W
Y(NORTHING-Ft.) 879983.00 X(EASTING-Ft.) 757928.84 Zone WEST
Convergence 00°08'25.4" Scale factor 0.99995305

Coordinate determination: GPS

Horizontal datum: NAD83(NSRS2007)

Accuracy (circle one): 1st 2nd 3rd other 1:35,000



Please complete sketch in black ink or type.

SURVEYORS CERTIFICATE:

I certify the monument and accessories indicated above were field located on 03-26-2008

BEN R. HOMOLA

3950
SIGNATURE PSM NO.

AIM ENGINEERING & SURVEYING, INC. 3114
FIRM OR AGENCY LB NO.

5300 LEE BOULEVARD

LEHIGH ACRES ADDRESS FL 33971

(239)332-4569 CITY STATE ZIP
07/30/2008 DATE

PHONE NUMBER

EMBOSSSED SEAL OVER SIGNATURE

SEND ORIGINAL TO:
Department of Environmental Protection
Bureau of Surveying and Mapping
3900 Commonwealth Boulevard
Mail Station 105
Tallahassee, Florida 32399

D.E.P. USE ONLY
Processed: _____
B.L.M. - I.D. _____
QUAD - I.D. _____