


FLORIDA DEPARTMENT OF ENVIRONMENTAL PROTECTION CERTIFIED CORNER RECORD

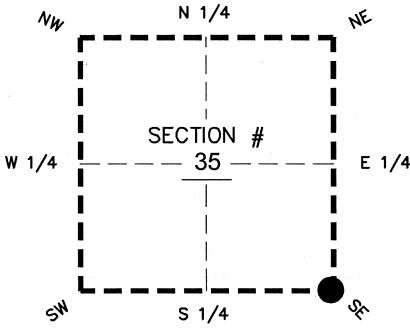
DOC. # _____

BLM. # T43SR26E600100

CORNER DESCRIPTION: MONUMENTATION DESCRIPTION (EVIDENCE FOUND OR METHOD TO SET)

Depict corner with 

FOUND 3.5"x3.5" CONCRETE MONUMENT, NO I.D.
PROJECTS 1.6' ABOVE GROUND



PRIOR CCR'S:

DOC. # 083361

HORIZONTAL POSITION INFORMATION (if determined):

Latitude 26°41'10.5625" N Longitude 81°40'46.7292" W

Y(NORTHING-Ft.) 855261.47 X(EASTING-Ft.) 760768.13 Zone WEST

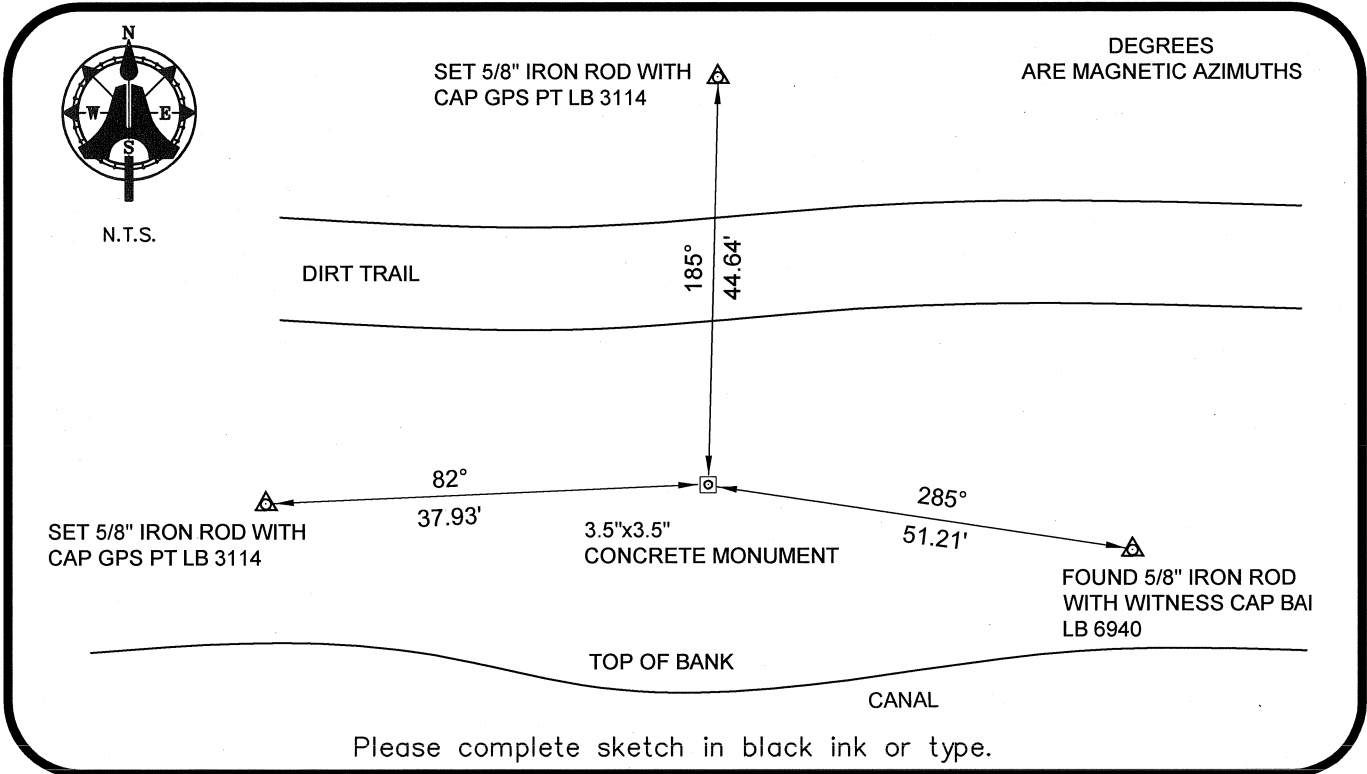
Convergence 00°08'37.9" Scale factor 0.99995372

Coordinate determination: GPS

Horizontal datum: NAD83(NSRS2007)

Accuracy (circle one): 1st 2nd 3rd other 1:35,000

SE corner of Section 35
Twp 43 S, Rge 26 E
Tallahassee Base Meridian,
LEE County(s), Florida



SURVEYORS CERTIFICATE:

I certify the monument and accessories indicated above were field located on 02-19-2008

BEN. R. HOMOLA

Ben R. Homola 3950
SIGNATURE PSM NO.

AIM ENGINEERING & SURVEYING, INC. 3114
FIRM OR AGENCY LB NO.

5300 LEE BOULEVARD

LEHIGH ACRES ADDRESS FL 33971

(239)332-4569 CITY 07/30/2008 STATE ZIP
PHONE NUMBER DATE

EMBOSSSED SEAL OVER SIGNATURE

SEND ORIGINAL TO:
Department of Environmental Protection
Bureau of Surveying and Mapping
3900 Commonwealth Boulevard
Mail Station 105
Tallahassee, Florida 32399

D.E.P. USE ONLY	
Processed:	_____
B.L.M. - I.D.	_____
QUAD - I.D.	_____