

FLORIDA DEPARTMENT OF ENVIRONMENTAL PROTECTION

CERTIFIED CORNER RECORD

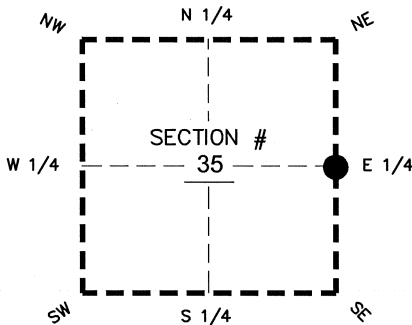
13

DOC. # _____
 BLM. # T43SR26E600140

CORNER DESCRIPTION: **MONUMENTATION DESCRIPTION (EVIDENCE FOUND OR METHOD TO SET)**

Depict corner with

SET 5/8" IRON ROD WITH CAP AIM ENG LB 3114
 USING COORDINATE VALUES PER CCR DOC #083360
 ADJUSTING VALUES FROM 1990 TO 2007



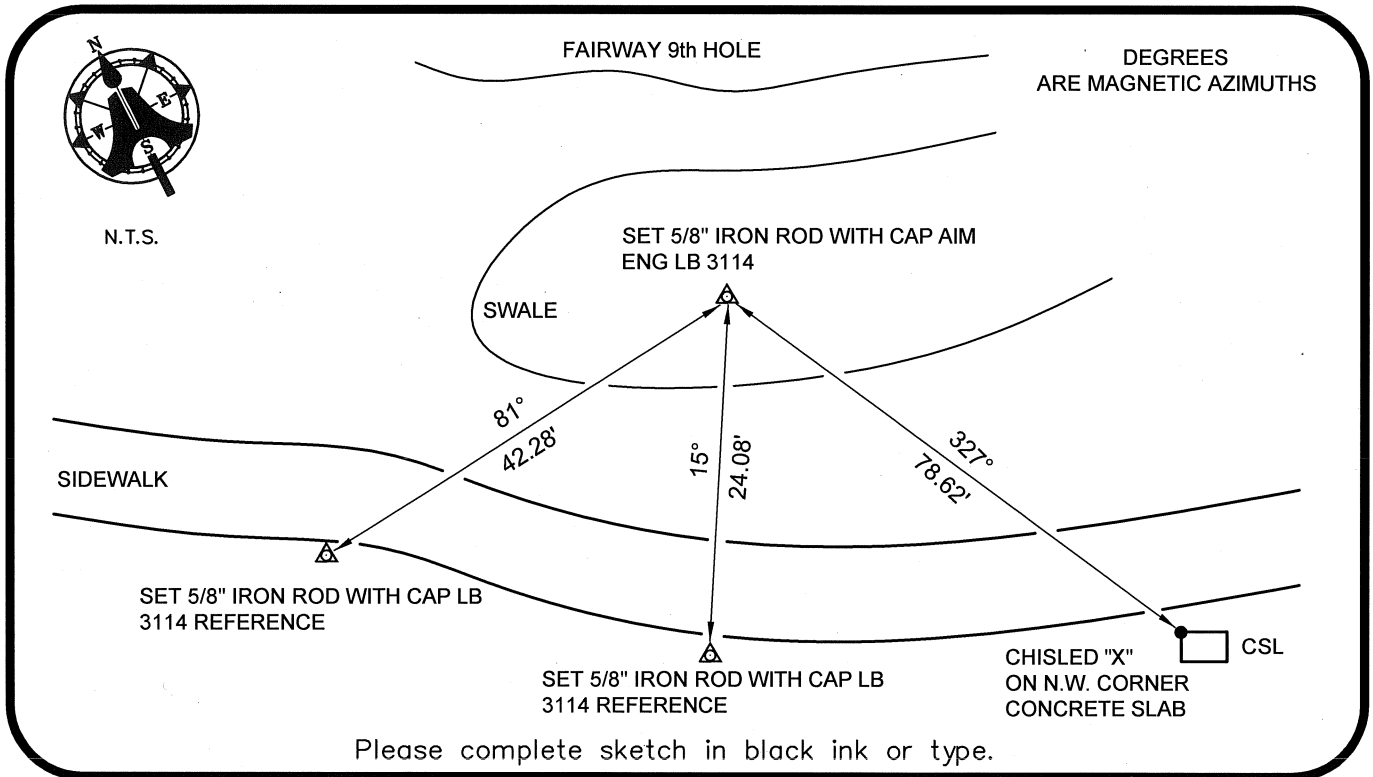
E 1/4 corner of Section 35
 Twp 43 S, Rge 26 E
 Tallahassee Base Meridian,
LEE County(s), Florida

PRIOR CCR'S:

DOC. # 083360

HORIZONTAL POSITION INFORMATION (if determined):

Latitude 26°41'36.6634" N Longitude 81°40'47.0260" W
 Y(NORTHING-Ft.) 857896.82 X(EASTING-Ft.) 760734.60 Zone WEST
 Convergence 00°08'37.9" Scale factor 0.99995371
 Coordinate determination: GPS
 Horizontal datum: NAD83(NSRS2007)
 Accuracy (circle one): 1st 2nd 3rd other 1:35,000



Please complete sketch in black ink or type.

SURVEYORS CERTIFICATE:

I certify the monument and accessories indicated above were field located on 03-13-2008

BEN R. HOMOLA

Ben R. Homola 3950
 SIGNATURE PSM NO.

AIM ENGINEERING & SURVEYING, INC. 3114
 FIRM OR AGENCY LB NO.

5300 LEE BOULEVARD
 LEHIGH ACRES ADDRESS FL 33971

(239)332-4569 07/30/2008 ZIP
 PHONE NUMBER DATE

EMBOSSSED SEAL OVER SIGNATURE

SEND ORIGINAL TO:
 Department of Environmental Protection
 Bureau of Surveying and Mapping
 3900 Commonwealth Boulevard
 Mail Station 105
 Tallahassee, Florida 32399

D.E.P. USE ONLY
Processed: _____
B.L.M. - I.D. _____
QUAD - I.D. _____