

# FLORIDA DEPARTMENT OF ENVIRONMENTAL PROTECTION CERTIFIED CORNER RECORD

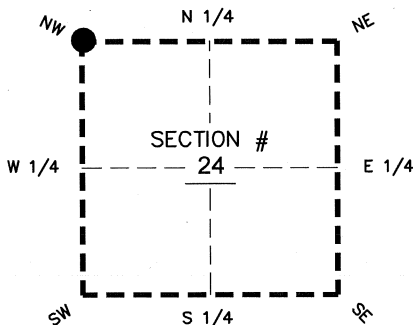
DOC. # \_\_\_\_\_

BLM. # T43SR26E600400

CORNER DESCRIPTION: MONUMENTATION DESCRIPTION (EVIDENCE FOUND OR METHOD TO SET)

Depict corner with ●

FOUND 1" SQUARE BOLT IN CUT OUT, 0.30' BELOW ASPHALT ROAD



### PRIOR CCR'S:

DOC. # 0006310, 0028757

### HORIZONTAL POSITION INFORMATION ( if determined ):

Latitude 26°43'29.5424" N Longitude 81°40'49.4790" W

Y(NORTHING-Ft.) 869293.75 X(EASTING-Ft.) 760483.54 Zone WEST

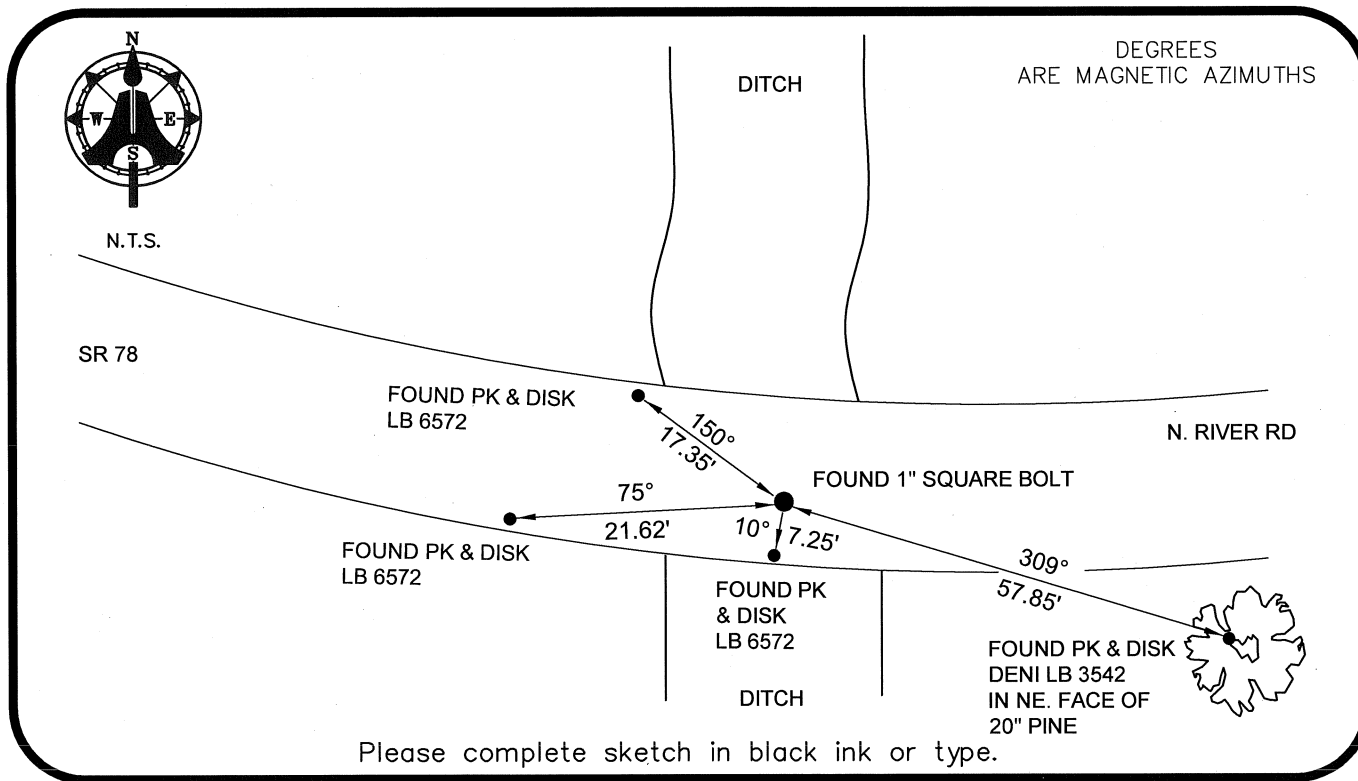
Convergence 00°08'37.4" Scale factor 0.99995365

Coordinate determination: GPS

Horizontal datum: NAD83(NSRS2007)

Accuracy (circle one): 1st 2nd 3rd other 1:35,000

NW corner of Section 24  
Twp 43 S, Rge 26 E  
Tallahassee Base Meridian,  
LEE County(s), Florida



Please complete sketch in black ink or type.

### SURVEYORS CERTIFICATE:

I certify the monument and accessories indicated above were field located on 03-05-2008

BEN R. HOMOLA

*Ben R. Homola* 3950  
SIGNATURE PSM NO.

AIM ENGINEERING & SURVEYING, INC. 3114  
FIRM OR AGENCY LB NO.

5300 LEE BOULEVARD

LEHIGH ACRES ADDRESS FL 33971

(239)332-4569 CITY STATE ZIP  
07/30/2008 DATE

PHONE NUMBER

DATE

EMBOSSSED SEAL OVER SIGNATURE

SEND ORIGINAL TO:  
Department of Environmental Protection  
Bureau of Surveying and Mapping  
3900 Commonwealth Boulevard  
Mail Station 105  
Tallahassee, Florida 32399

D.E.P. USE ONLY	
Processed:	_____
B.L.M. - I.D.	_____
QUAD - I.D.	_____