

FLORIDA DEPARTMENT OF ENVIRONMENTAL PROTECTION

CERTIFIED CORNER RECORD

111

DOC. # _____

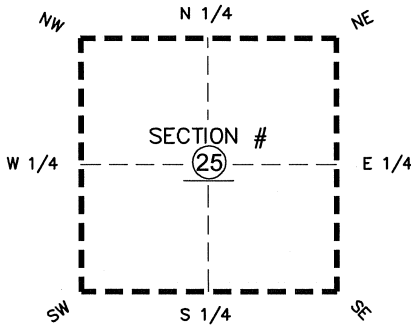
BLM. # T43SR26E640240

CORNER DESCRIPTION:

MONUMENTATION DESCRIPTION (EVIDENCE FOUND OR METHOD TO SET)

Depict corner with

HORIZONTAL POSITION ESTABLISHED AT THE INTERSECTION OF THE NORTH-SOUTH, EAST-WEST 1/4 SECTION LINES. SEE SKETCH BELOW FOR CORNERS FOUND



CENTER corner of Section 25
 Twp 43 S, Rge 26 E
 Tallahassee Base Meridian,
LEE County(s), Florida

PRIOR CCR'S:

DOC. # N/A

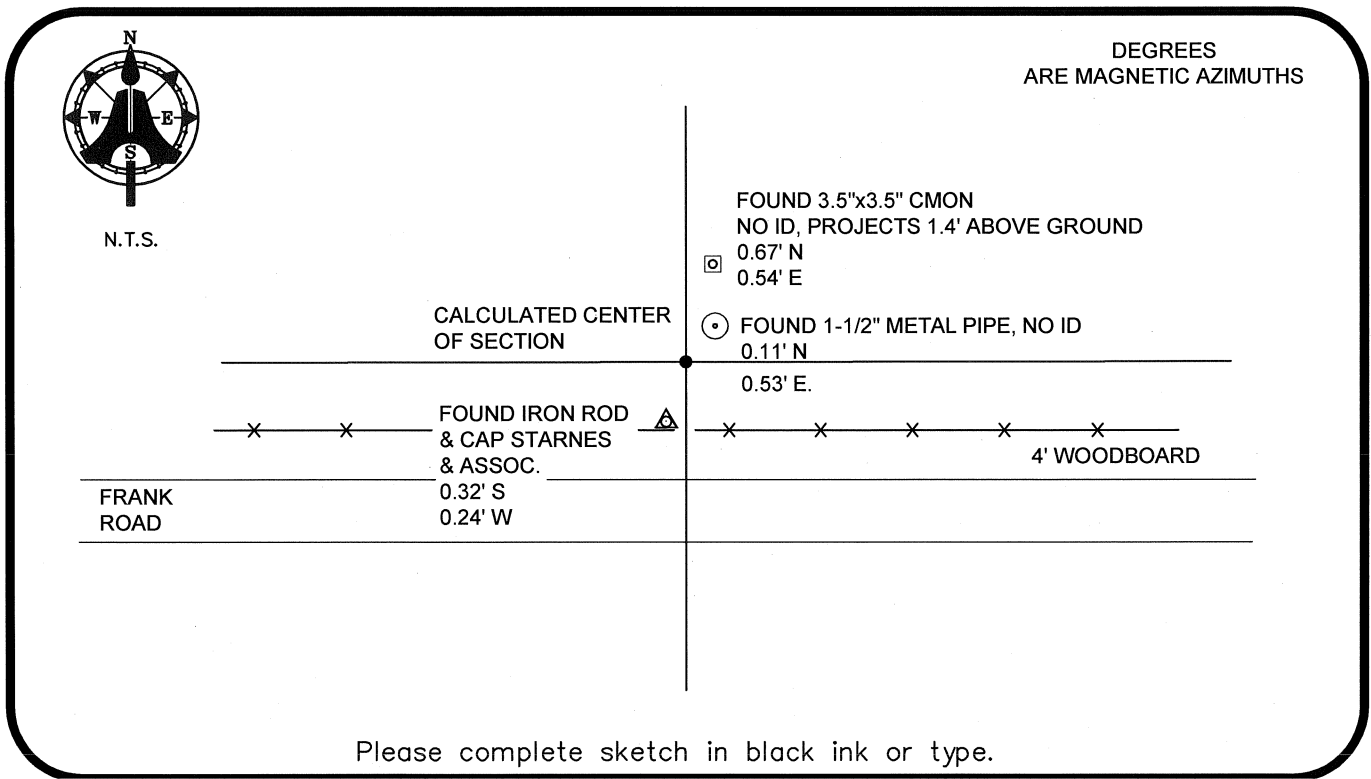
HORIZONTAL POSITION INFORMATION (if determined):

Latitude 26°42'29.3601" N Longitude 81°40'18.7200 W
 Y(NORTHING-Ft.) 863224.17 X(EASTING-Ft.) 763288.11 Zone WEST
 Convergence 00°08'50.9" Scale factor 0.99995433

Coordinate determination: GPS

Horizontal datum: NAD83(NSRS2007)

Accuracy (circle one): 1st 2nd 3rd other 1:35,000



SURVEYORS CERTIFICATE:

I certify the monument and accessories indicated above were field located on 03-17-2008

BEN R. HOMOLA

Ben R. Homola 3950
SIGNATURE

AIM ENGINEERING & SURVEYING, INC. 3114
FIRM OR AGENCY PSM NO.

5300 LEE BOULEVARD
 LEHIGH ACRES FL 33971
ADDRESS STATE

(239)332-4569 07/30/2008
PHONE NUMBER DATE

EMBOSSSED SEAL OVER SIGNATURE

SEND ORIGINAL TO:
 Department of Environmental Protection
 Bureau of Surveying and Mapping
 3900 Commonwealth Boulevard
 Mail Station 105
 Tallahassee, Florida 32399

D.E.P. USE ONLY

Processed: _____

B.L.M. - I.D. _____

QUAD - I.D. _____