


FLORIDA DEPARTMENT OF ENVIRONMENTAL PROTECTION
CERTIFIED CORNER RECORD

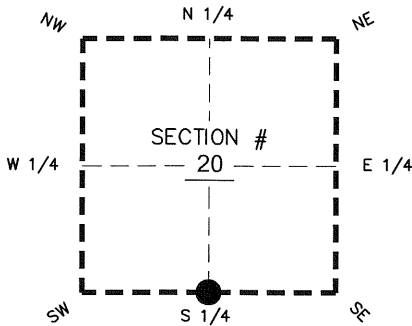
250

DOC. # _____
 BLM. # T43SR27E240300

CORNER DESCRIPTION: MONUMENTATION DESCRIPTION (EVIDENCE FOUND OR METHOD TO SET)

Depict corner with 

FOUND 3"X3" CONCRETE MONUMENT, NO ID.
 0.6' BELOW GROUND



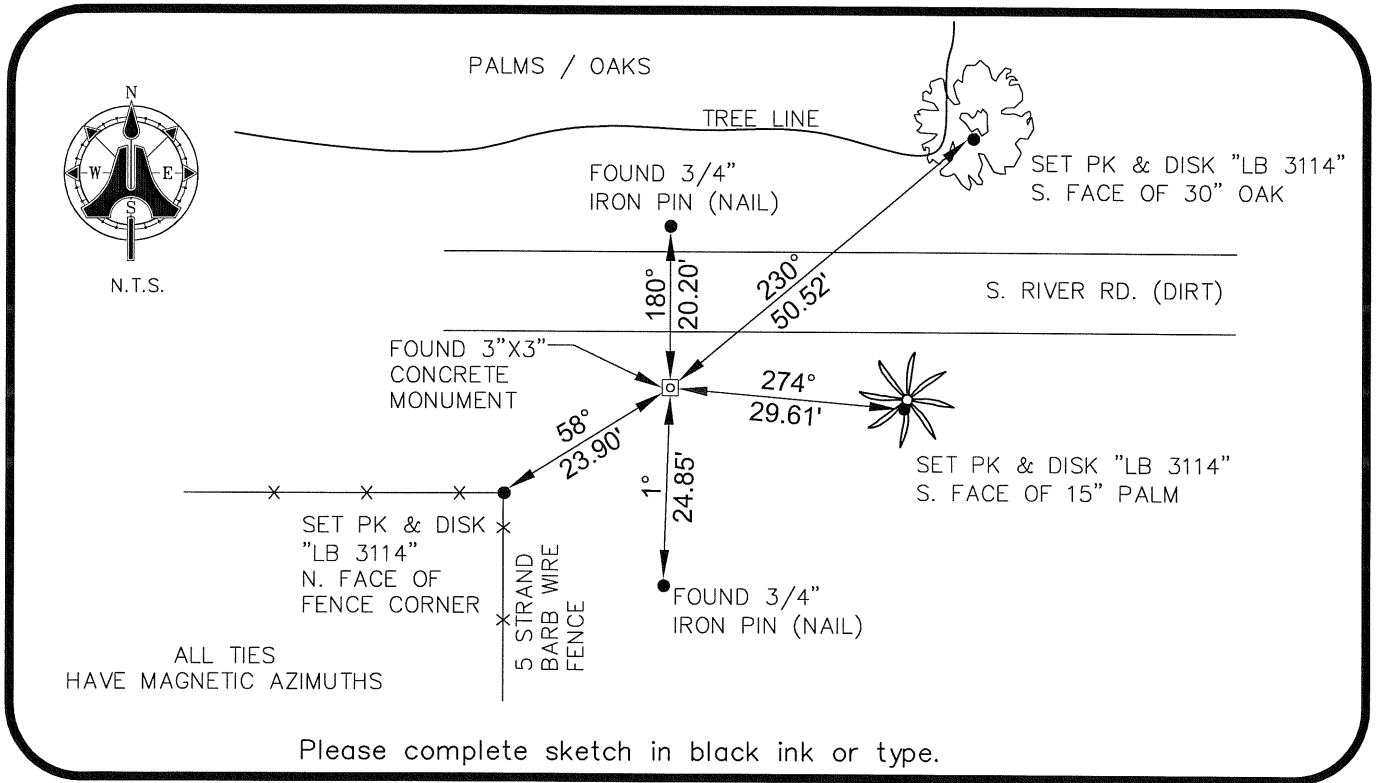
S 1/4 corner of Section 20
 Twp 43 S, Rge 27 E
 Tallahassee Base Meridian,
LEE County(s), Florida

PRIOR CCR'S:

DOC. # 20070, 28753

HORIZONTAL POSITION INFORMATION (if determined):

Latitude 26° 42' 56.5727" N Longitude 81° 38' 22.5639" W
 Y(NORTHING-Ft.) 866000.31 X(EASTING-Ft.) 773813.74 Zone West
 Convergence 0° 09' 43.3" Scale factor 0.99995705
 Coordinate determination: GPS
 Horizontal datum: NAD83(NSRS2007)
 Accuracy (circle one): 1st 2nd 3rd other 1:35,000



Please complete sketch in black ink or type.

SURVEYORS CERTIFICATE:

I certify the monument and accessories indicated above were field located on 12/31/08

BEN R. HOMOLA

Ben R. Homola

3950

SIGNATURE

PSM NO.

AIM ENGINEERING & SURVEYING, INC.

3114

FIRM OR AGENCY

LB NO.

5300 LEE BOULEVARD

LEHIGH ACRES

ADDRESS

FL

33971

(239)332-4569

PHONE NUMBER

02/13/09

DATE

ZIP

EMBOSSSED SEAL OVER SIGNATURE

SEND ORIGINAL TO:
 Department of Environmental Protection
 Bureau of Surveying and Mapping
 3900 Commonwealth Boulevard
 Mail Station 105
 Tallahassee, Florida 32399

D.E.P. USE ONLY	
Processed: _____	_____
B.L.M. - I.D. _____	_____
QUAD - I.D. _____	_____