

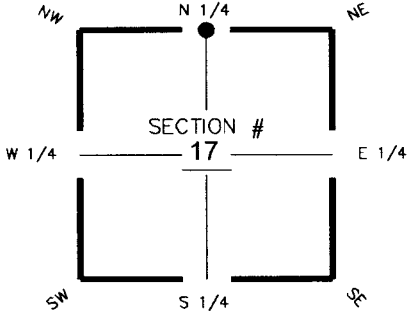
FLORIDA DEPARTMENT OF ENVIRONMENTAL PROTECTION CERTIFIED CORNER RECORD

DOC. # 091307

CORNER DESCRIPTION: **MONUMENTATION DESCRIPTION (EVIDENCE FOUND OR METHOD TO SET)**

Depict corner with

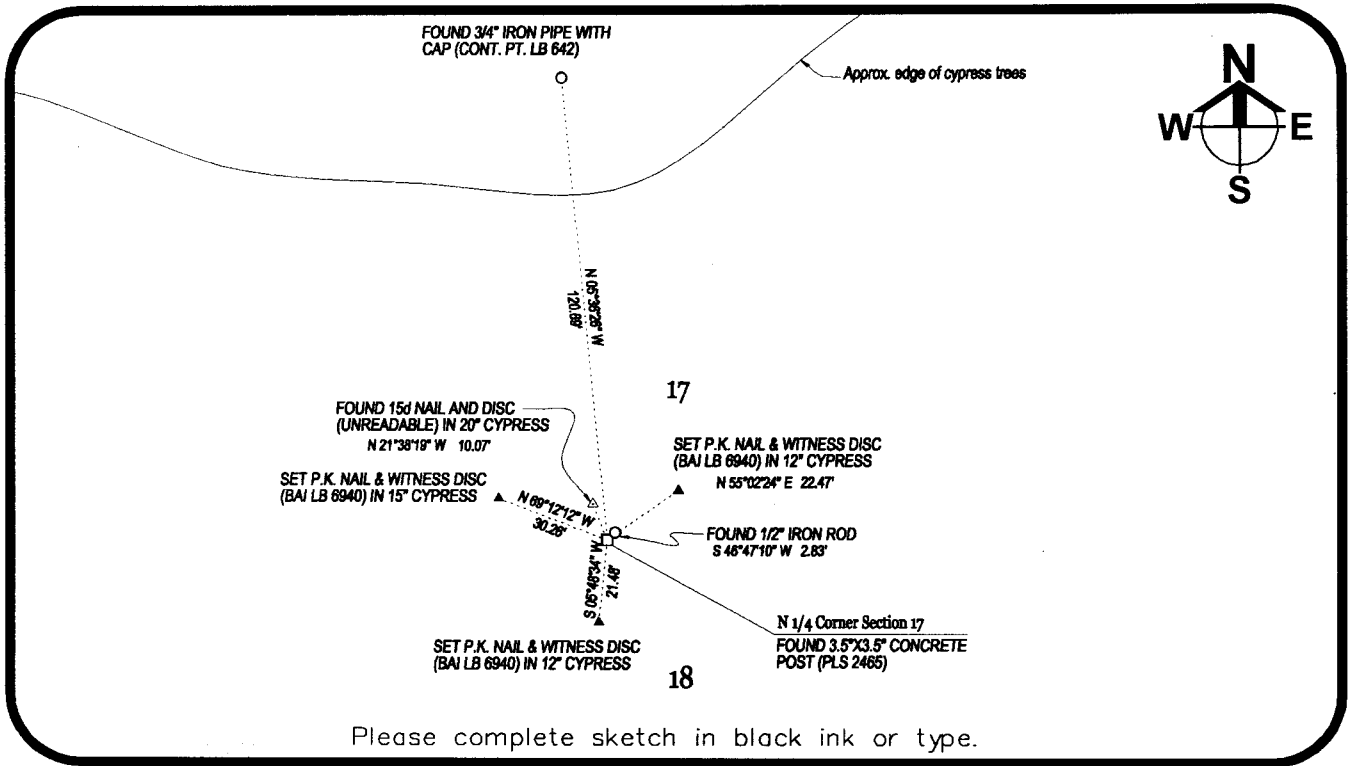
FOUND 3.5"X3.5" CONC. POST WITH ALUMINUM DISC (STARNES PLS 2465)



N 1/4 corner of Section 17
Twp 43S Rge 27E
Tallahassee Base Meridian,
Lee County(s), Florida

HORIZONTAL POSITION INFORMATION (if determined):

Latitude 26°44'26.53009664"N Longitude 81° 38' 23.66965691"W
Y(NORTHING-Ft.) 875083.1429 X(EASTING-Ft.) 773687.7997 Zone WEST
Convergence 0°09'43.2946" Scale factor 0.99995701
Coordinate determination (circle one): Field traverse GPS NAD83(1999)
Horizontal datum (circle one): NAD27 NAD83(1986) NAD83(1990) other (explain)
Accuracy (circle one): 1st 2nd 3rd other _____



Please complete sketch in black ink or type.

SURVEYORS CERTIFICATE:

I certify the monument and accessories indicated above were field located on 06-21-2007

John Robert Barry III
SIGNATURE
Barraco & Associates
FIRM OR AGENCY
2271 McGregor Boulevard
ADDRESS
Fort Myers FL 33901
CITY STATE ZIP
(239) 461-3170 06-21-2007
PHONE NUMBER DATE

SEND ORIGINAL TO:
Department of Environmental Protection
Bureau of Surveying and Mapping
3900 Commonwealth Boulevard
Mail Station 105
Tallahassee, Florida 32399

D.E.P. USE ONLY
Processed: 7-30-07 MB
B.L.M. - I.D. 240500
QUAD - I.D. 2214 Olga

EMBOSSSED SEAL OVER SIGNATURE