


FLORIDA DEPARTMENT OF ENVIRONMENTAL PROTECTION  
CERTIFIED CORNER RECORD

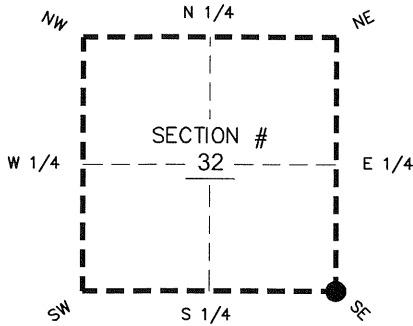
203

DOC. # \_\_\_\_\_  
BLM. # T43SR27E300100

CORNER DESCRIPTION:      MONUMENTATION DESCRIPTION (EVIDENCE FOUND OR METHOD TO SET)

Depict corner with 

FOUND 6" x 6" CONCRETE MONUMENT  
WITH 1/2" REBAR  
PROJECTS 0.6' ABOVE GROUND



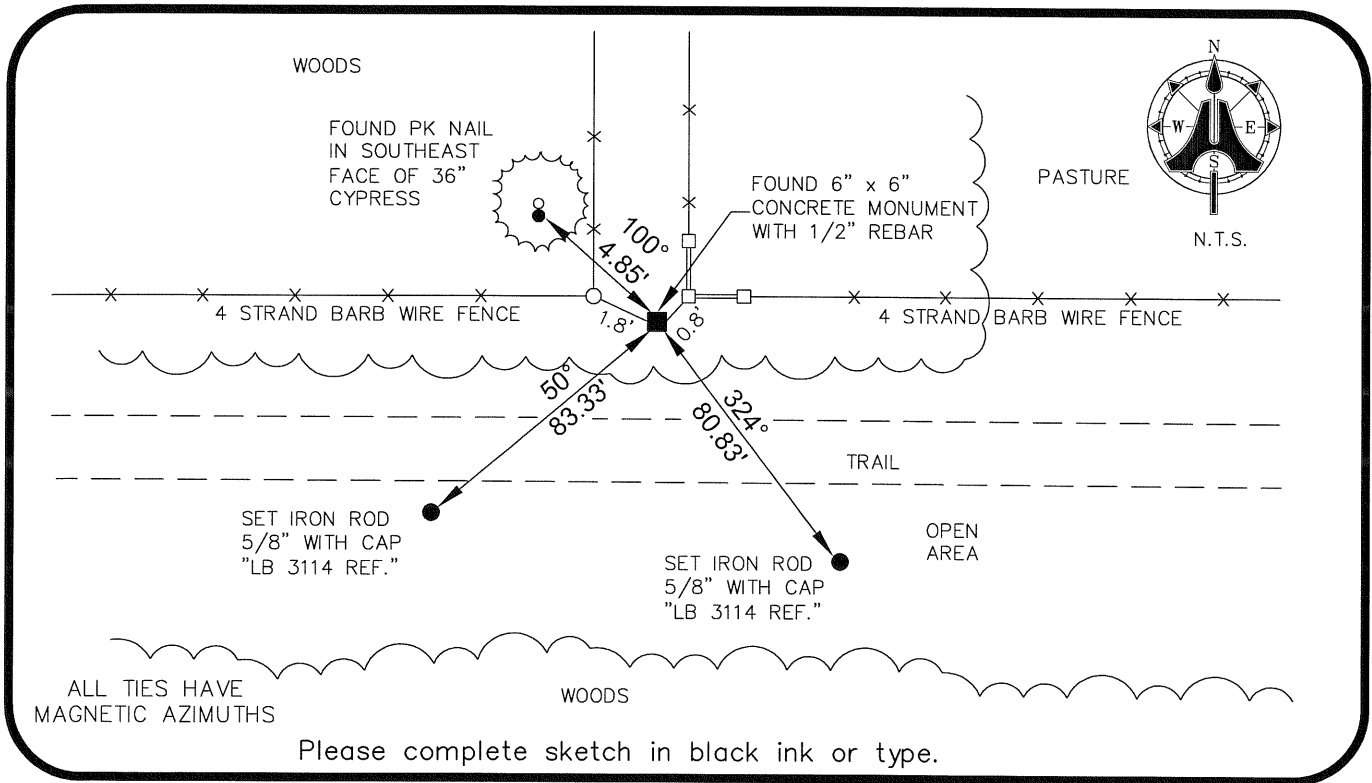
SE corner of Section 32  
Twp 43 S, Rge 27 E  
Tallahassee Base Meridian,  
LEE County(s), Florida

PRIOR CCR'S:

DOC. # N/A

HORIZONTAL POSITION INFORMATION ( if determined ):

Latitude 26° 41' 12.8786" N Longitude 81° 37' 51.8514" W  
Y(NORTHING-Ft.) 855538.17 X(EASTING-Ft.) 776628.96 Zone West  
Convergence 00° 09' 56.5" Scale factor 0.99995781  
Coordinate determination: GPS  
Horizontal datum: NAD83(NSRS2007)  
Accuracy (circle one):      1st      2nd      3rd      other 1:35,000



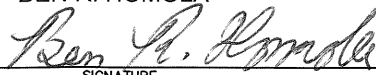
ALL TIES HAVE  
MAGNETIC AZIMUTHS

Please complete sketch in black ink or type.

SURVEYORS CERTIFICATE:

I certify the monument and accessories indicated above were field located on 07/01/09

BEN R. HOMOLA



SIGNATURE	3950
FIRM OR AGENCY	PSM NO. 3114
5300 LEE BOULEVARD	LB NO.
LEHIGH ACRES	ADDRESS FL 33971
CITY	STATE ZIP
(239)332-4569	07/13/09
PHONE NUMBER	DATE

SEND ORIGINAL TO:  
Department of Environmental Protection  
Bureau of Surveying and Mapping  
3900 Commonwealth Boulevard  
Mail Station 105  
Tallahassee, Florida 32399

<b>D.E.P. USE ONLY</b>	
Processed:	_____
B.L.M. - I.D.	_____
QUAD - I.D.	_____

EMBOSSSED SEAL OVER SIGNATURE