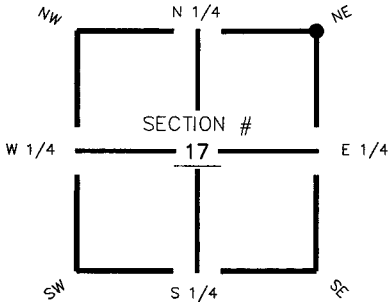


FLORIDA DEPARTMENT OF ENVIRONMENTAL PROTECTION CERTIFIED CORNER RECORD

DOC. # 089433

CORNER DESCRIPTION: **MONUMENTATION DESCRIPTION (EVIDENCE FOUND OR METHOD TO SET)**

Depict corner with J-9

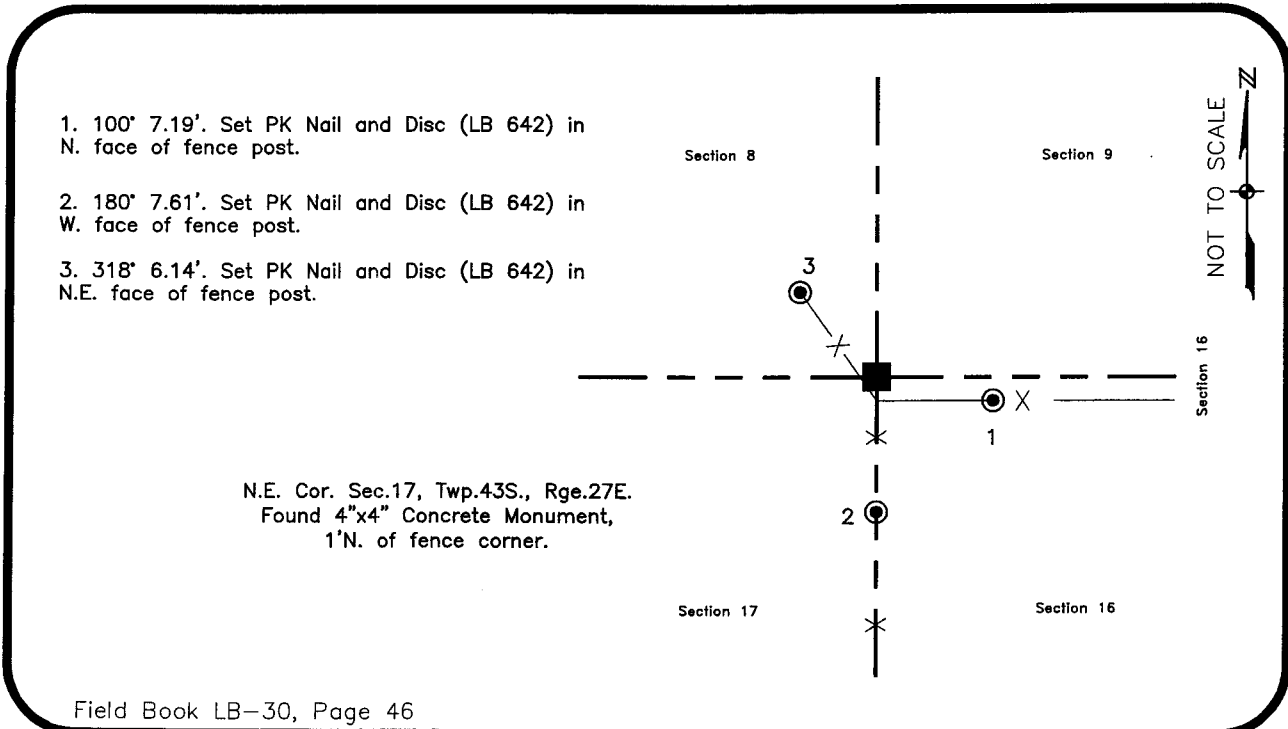


Found 4"x4" Concrete Monument

HORIZONTAL POSITION INFORMATION (if determined):

Latitude 26° 44' 26.19037" N Longitude 81° 37' 54.28135" W
 Y(NORTHING-Ft.) 875056.46 X(EASTING-Ft.) 776352.17 Zone FL83-WF
 Convergence 0° 09' 56.51650" Scale factor 0.999957737
 Coordinate determination (circle one): Field traverse GPS
 Horizontal datum (circle one): NAD27 NAD83(1986) NAD83(1999) other (explain)
 Accuracy (circle one): 1st 2nd 3rd other _____

NE corner of Section 17
Twp 43 South , Rge 27 East
Tallahassee Base Meridian,
Lee County(s), Florida



SURVEYORS CERTIFICATE:

I certify the monument and accessories indicated above were field located on August 31, 2005

[Signature]
 SIGNATURE _____ 4912 _____
 Johnson Engineering, Inc. PSM NO. _____
 FIRM OR AGENCY _____ 642 _____
 251 West Hickpochee (SR80) LB NO. _____
 ADDRESS _____
 La Belle, Florida 33935
 CITY STATE ZIP
 (863) 612-0594 November 1, 2005
 PHONE NUMBER DATE

SEND ORIGINAL TO:
 Department of Environmental Protection
 Bureau of Surveying and Mapping
 3900 Commonwealth Boulevard
 Mail Station 105
 Tallahassee, Florida 32399

D.E.P. USE ONLY

Processed: 11-13-06 MB

B.L.M. - I.D. 300500

QUAD - I.D. 224 Olga

EMBOSSSED SEAL OVER SIGNATURE