


FLORIDA DEPARTMENT OF ENVIRONMENTAL PROTECTION
CERTIFIED CORNER RECORD

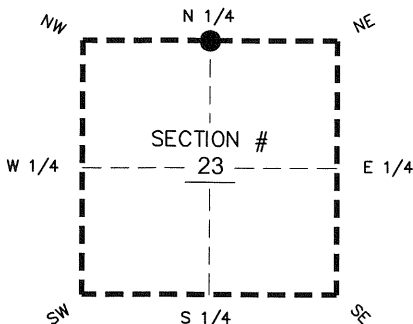
280

DOC. # _____
BLM. # T43SR27E540400

CORNER DESCRIPTION: MONUMENTATION DESCRIPTION (EVIDENCE FOUND OR METHOD TO SET)

Depict corner with 

FOUND 30d NAIL IN
CUT-OUT
0.3' BELOW ASPHALT



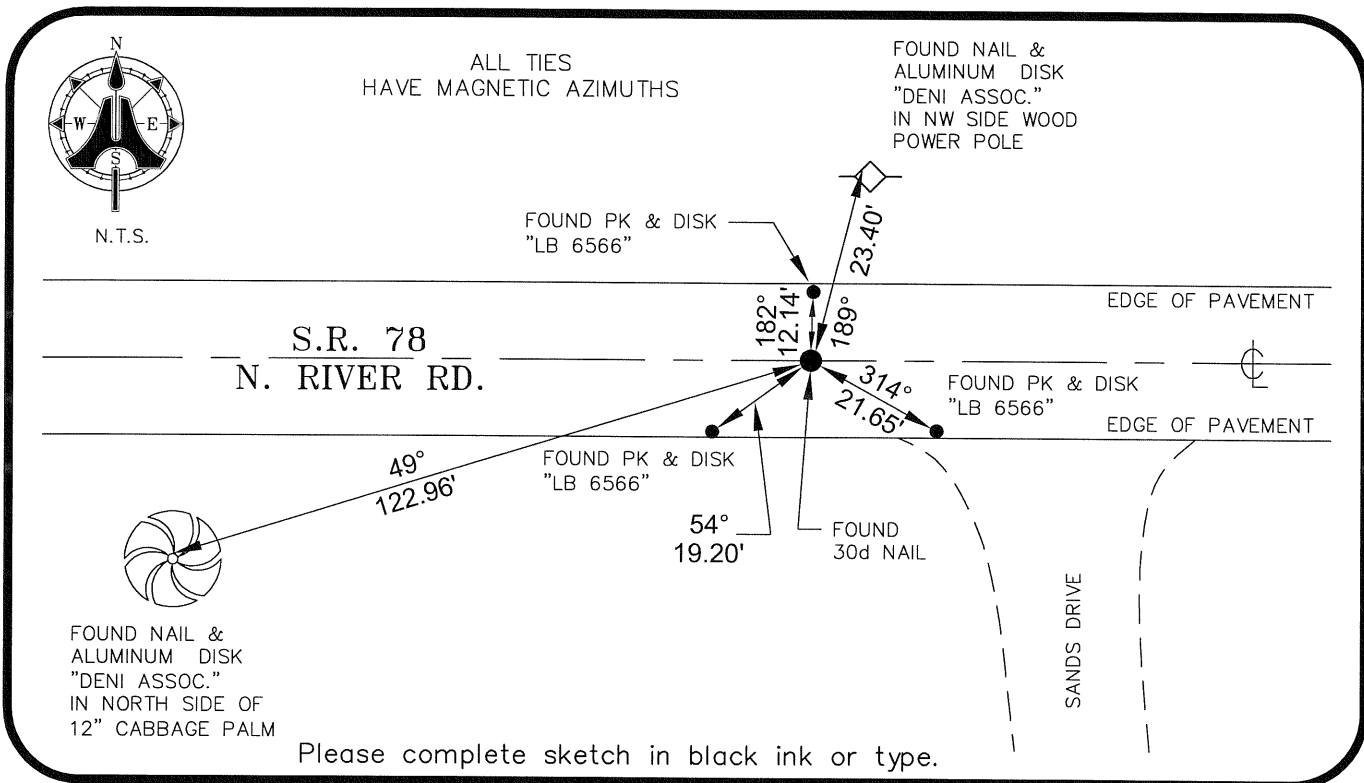
N 1/4 corner of Section 23
Twp 43 S, Rge 27 E
Tallahassee Base Meridian,
LEE County(s), Florida

PRIOR CCR'S:

DOC. # 28741, 91484

HORIZONTAL POSITION INFORMATION (if determined):

Latitude 26° 43' 32.3062" N Longitude 81° 35' 27.1368" W
Y(NORTHING-Ft.) 869656.40 X(EASTING-Ft.) 789709.44 Zone West
Convergence 00° 11' 02.4" Scale factor 0.99996162
Coordinate determination: GPS
Horizontal datum: NAD83(NSRS2007)
Accuracy (circle one): 1st 2nd 3rd other 1:35,000



SURVEYORS CERTIFICATE:

I certify the monument and accessories indicated above were field located on 02/25/2009

BEN R. HOMOLA

Ben R. Homola 3950
SIGNATURE PSM NO.

AIM ENGINEERING & SURVEYING, INC. 3114
FIRM OR AGENCY LB NO.

5300 LEE BOULEVARD

LEHIGH ACRES ADDRESS FL 33971

CITY STATE ZIP
(239)332-4569 04/30/09

PHONE NUMBER DATE

EMBOSSSED SEAL OVER SIGNATURE

SEND ORIGINAL TO:
Department of Environmental Protection
Bureau of Surveying and Mapping
3900 Commonwealth Boulevard
Mail Station 105
Tallahassee, Florida 32399

D.E.P. USE ONLY	
Processed:	_____
B.L.M. - I.D.	_____
QUAD - I.D.	_____