


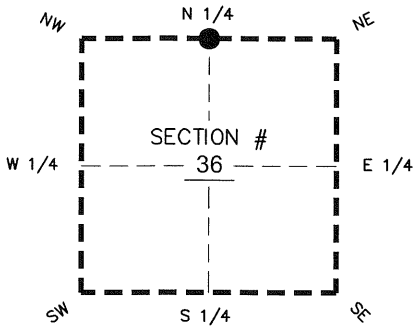
FLORIDA DEPARTMENT OF ENVIRONMENTAL PROTECTION  
CERTIFIED CORNER RECORD

234

DOC. # \_\_\_\_\_  
 BLM. # T43SR27E640200

CORNER DESCRIPTION:      MONUMENTATION DESCRIPTION (EVIDENCE FOUND OR METHOD TO SET)

Depict corner with  



N 1/4 corner of Section 36  
 Twp 43 S, Rge 27 E  
 Tallahassee Base Meridian,  
LEE County(s), Florida

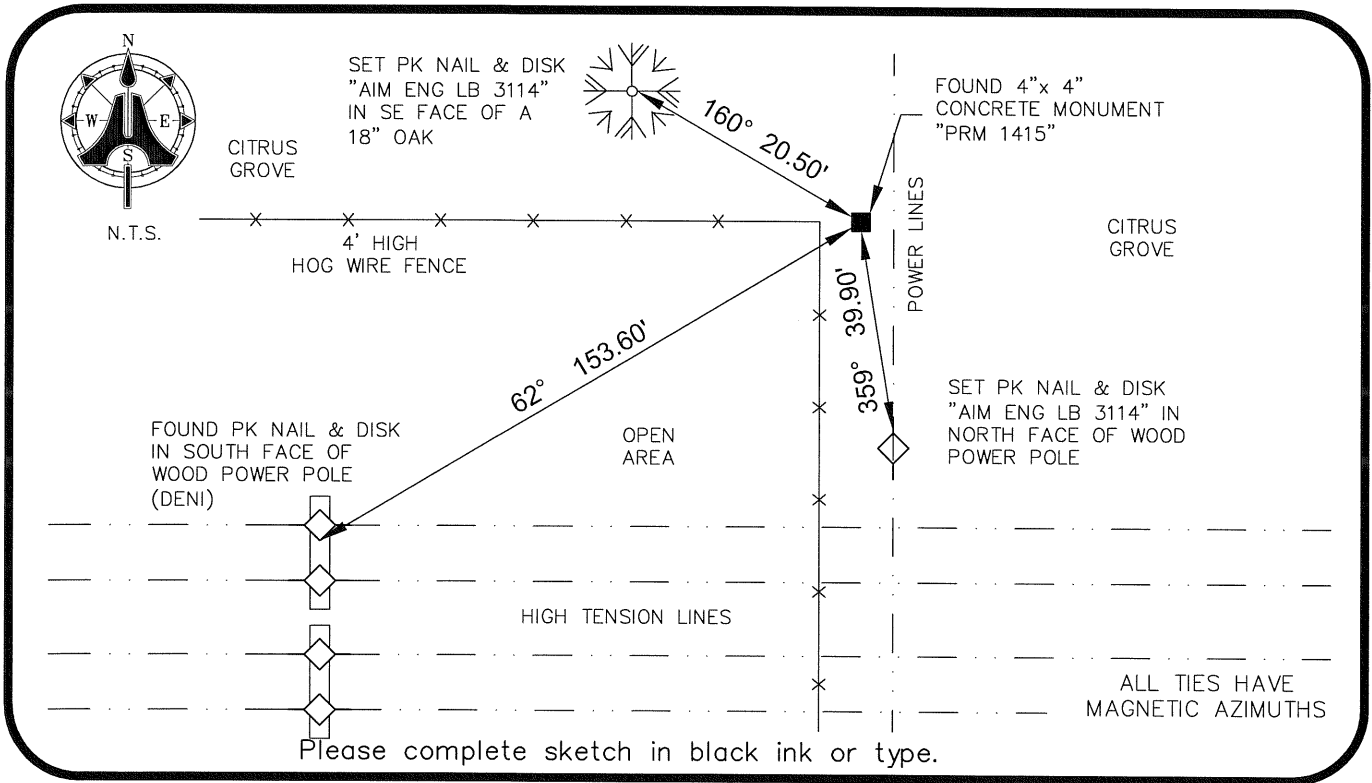
FOUND 4" x 4" CONCRETE MONUMENT  
 WITH ALUMINUM DISK  
 "PRM 1415"

PRIOR CCR'S:

DOC. # 28735, 63846

HORIZONTAL POSITION INFORMATION ( if determined ):

Latitude 26° 42' 07.0717" N Longitude 81° 34' 28.2893" W  
 Y(NORTHING-Ft.) 861067.62 X(EASTING-Ft.) 795073.86 Zone West  
 Convergence 00° 11' 28.3" Scale factor 0.99996330  
 Coordinate determination: GPS  
 Horizontal datum: NAD83(NSRS2007)  
 Accuracy (circle one):      1st      2nd      3rd      other 1:35,000



SURVEYORS CERTIFICATE:

I certify the monument and accessories indicated above were field located on 07/08/2009

BEN R. HOMOLA

*Ben R. Homola*  
 SIGNATURE

3950

AIM ENGINEERING & SURVEYING, INC.

PSM NO. 3114

FIRM OR AGENCY

LB NO.

5300 LEE BOULEVARD

LEHIGH ACRES

ADDRESS

FL

33971

(239)332-4569

PHONE NUMBER

07/13/09

DATE

EMBOSSSED SEAL OVER SIGNATURE

SEND ORIGINAL TO:  
 Department of Environmental Protection  
 Bureau of Surveying and Mapping  
 3900 Commonwealth Boulevard  
 Mail Station 105  
 Tallahassee, Florida 32399

D.E.P. USE ONLY	
Processed: _____	
B.L.M. - I.D. _____	
QUAD - I.D. _____	