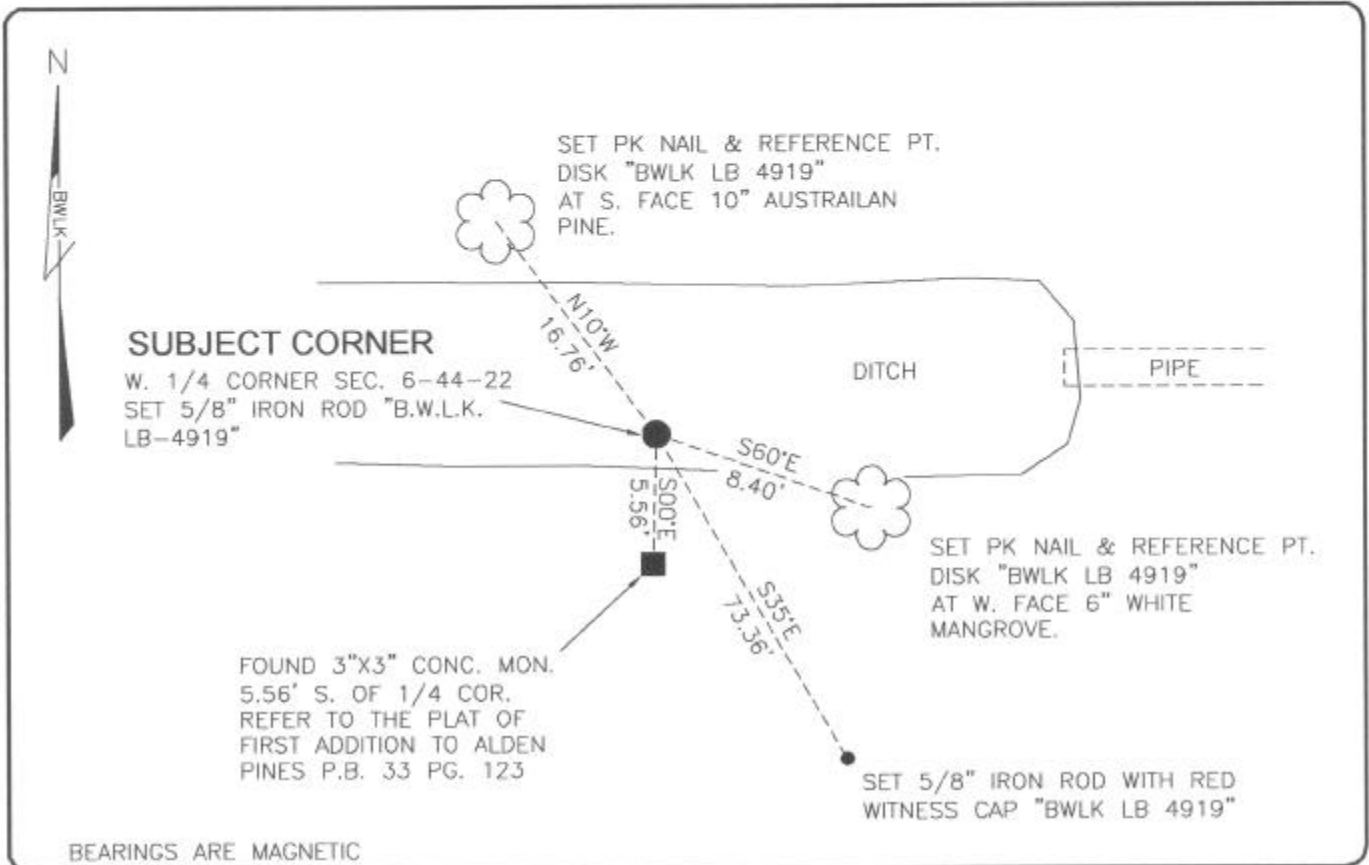


LAND CORNER RECORD

**PUBLIC WORKS
LEE COUNTY, FLORIDA**

Address - 1500 Monroe St., Ft. Myers, Fla. 33901

Phone : (239) 479-8900



COMMENTS:

SET 5/8" IRON ROD BASED ON THE PLAT OF THE FIRST ADDITION TO ALDEN PINES, PLAT BOOK 33, PAGE 123.

CORNER DESCRIPTION

W1/4 Corner
Section **6**
Township **44**
Range **22**



HORIZONTAL POSITION INFORMATION

Florida West Zone, NAD 1983(1990 Adjustment)

Northing(ft) 849823.09 Easting(ft) 604765.74

Latitude 26°40'17.6877" Longitude 82°09'26.6434"

Scale Factor 0.99994

EXISTING CERTIFIED CORNER RECORDS

Document No.	Date
24255	UNAVAILABLE

The above documents are based on FDEP Bureau of Surveying and Mapping Record Information.

I hereby certify the monument and accessories shown above were field located on 8-11-04.

Scott C. Whitaker

SCOTT C. WHITAKER
Professional Surveyor and Mapper
Florida Certificate No. 4324
Date Signed 9-03-04

BEAN, WHITAKER, LUTZ & KAREH, INC. (LB 4919)
13041 McGregor Boulevard
Fort Myers, Florida 33919-5910
Phone: (239) 481-1331