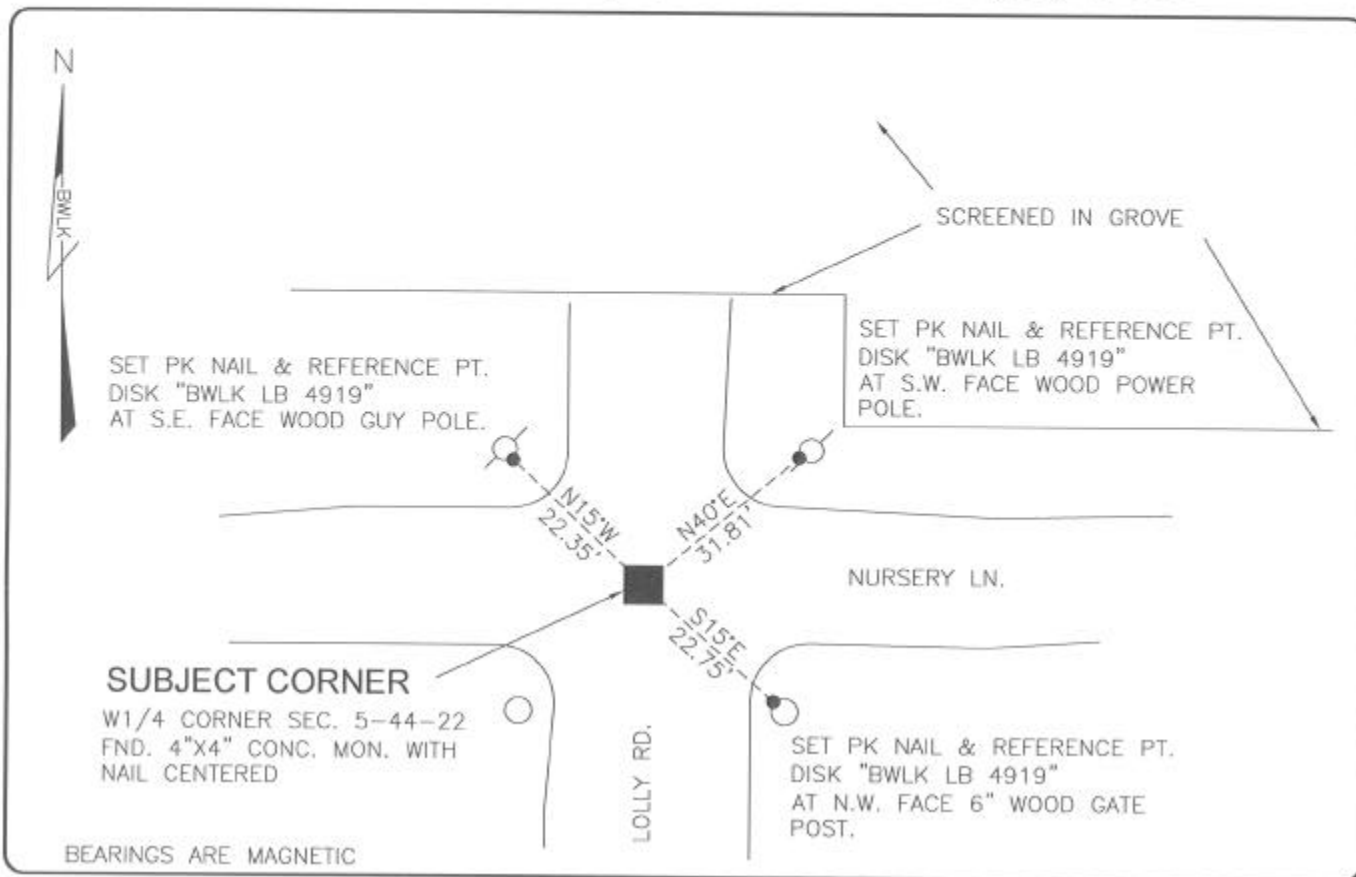


LAND CORNER RECORD

**PUBLIC WORKS
LEE COUNTY, FLORIDA**

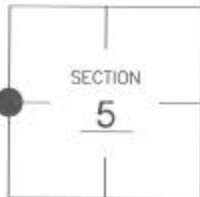
Address - 1500 Monroe St., Ft. Myers, Fla. 33901

Phone : (239) 479-8900



CORNER DESCRIPTION

W1/4 Corner
Section 5
Township 44
Range 22



COMMENTS:

FOUND CONCRETE MONUMENT IS IN HARMONY WITH HISTORICAL RECORDS INCLUDING KREAMERS AVACADO (P.B.5 PG.21)-PLAT DIMENSIONS ONLY, FLORIDA STATE PROPERTIES, INC.-UNIT NO.4 PINE ISLAND (AN UNRECORDED PLAT) AND THE S.R.D. R/W MAPS FOR STRINGFELLOW ROAD (S.R.767) DATED 1940.

HORIZONTAL POSITION INFORMATION

Florida West Zone, NAD 1983(1990 Adjustment)
 Northing(ft) 849851.00 Easting(ft) 610174.69
 Latitude 26°40'18.0267" Longitude 82°08'27.0157"
 Scale Factor 0.99994

EXISTING CERTIFIED CORNER RECORDS

Document No.	Date
NONE	NONE

The above documents are based on FDEP Bureau of Surveying and Mapping Record Information.

I hereby certify the monument and accessories shown above were field located on 8-11-04.

Scott C. Whitaker
SCOTT C. WHITAKER
 Professional Surveyor and Mapper
 Florida Certificate No. 4324
 Date Signed 9-03-04

BEAN, WHITAKER, LUTZ & KAREH, INC. (LB 4919)
 13041 McGregor Boulevard
 Fort Myers, Florida 33919-5910
 Phone: (239) 481-1331

POINT NO. 11513

BLM REFERENCE NO. T44SR22E200640