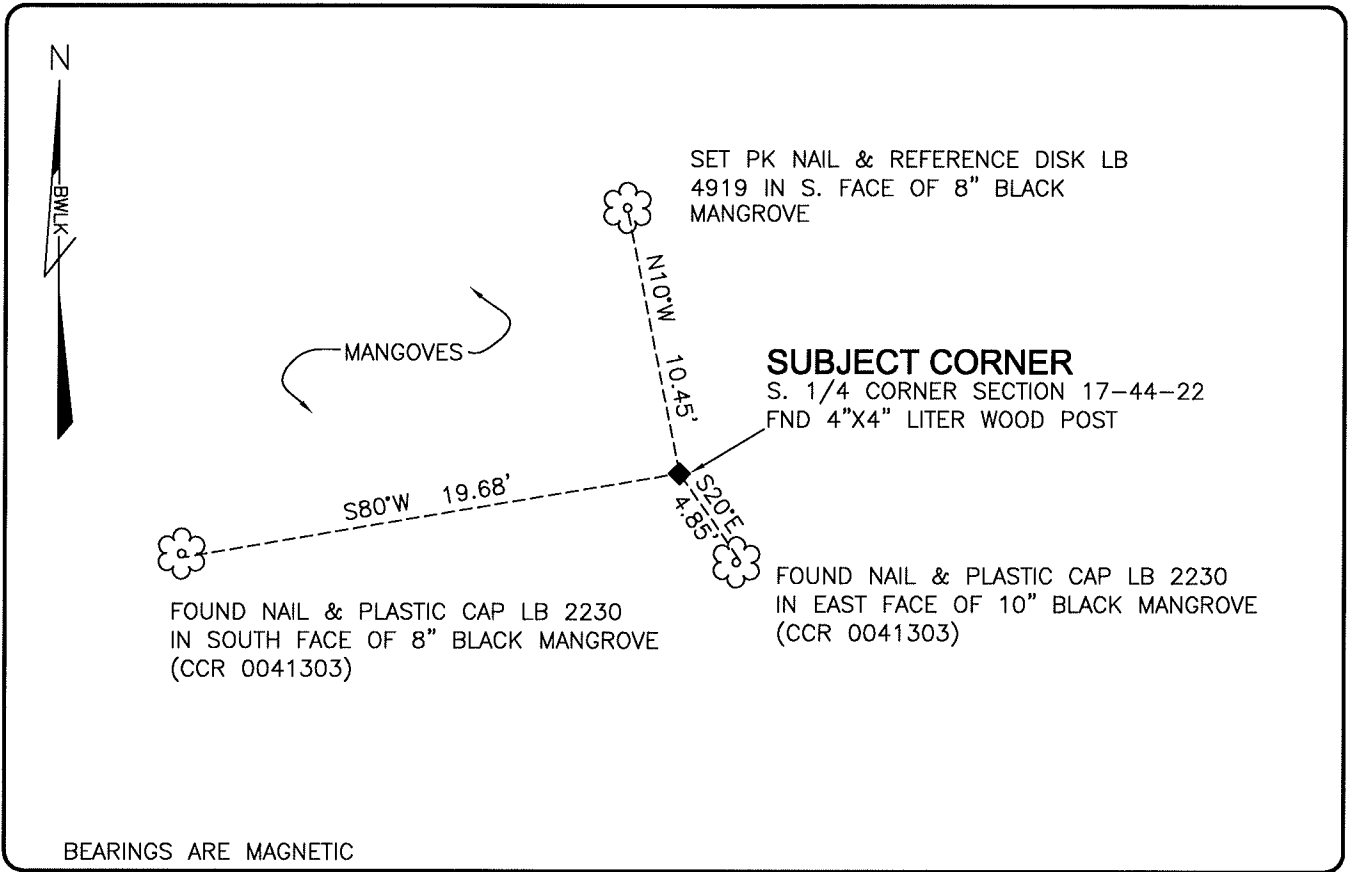


LAND CORNER RECORD

**PUBLIC WORKS
LEE COUNTY, FLORIDA**

Address - 1500 Monroe St., Ft. Myers, Fla. 33901

Phone : (239) 479-8900

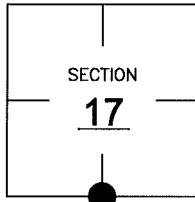


BEARINGS ARE MAGNETIC

COMMENTS: CORNER RECOVERED AS SHOWN ON CCR 41303. TIE TO SE CORNER OF SECTION IN HARMONY WITH JOHN AMEY RECORDS DATED 1963

CORNER DESCRIPTION

S 1/4 Corner
Section 17
Township 44
Range 22



HORIZONTAL POSITION INFORMATION

Florida West Zone, NAD 1983(1990 Adjustment)
Northing(ft) 836808.92 Easting(ft) 612659.43
Latitude 26°38'08.8844" Longitude 82°07'59.4740"
Scale Factor 0.99994

EXISTING CERTIFIED CORNER RECORDS

Document No.	Date
<u>0041303</u>	<u>2/1992</u>
_____	_____
_____	_____
_____	_____
_____	_____

The above documents are based on FDEP Bureau of Surveying and Mapping Record Information.

I hereby certify the monument and accessories shown above were field located on 4-11-07.

Scott C. Whitaker
SCOTT C. WHITAKER
Professional Surveyor and Mapper
Florida Certificate No. 4324
Date Signed 5/14/07

BEAN, WHITAKER, LUTZ & KAREH, INC. (LB 4919)
13041 McGregor Boulevard
Fort Myers, Florida 33919-5910
Phone: (239) 481-1331

POINT NO. 11673

BLM REFERENCE NO. T44SR22E240400