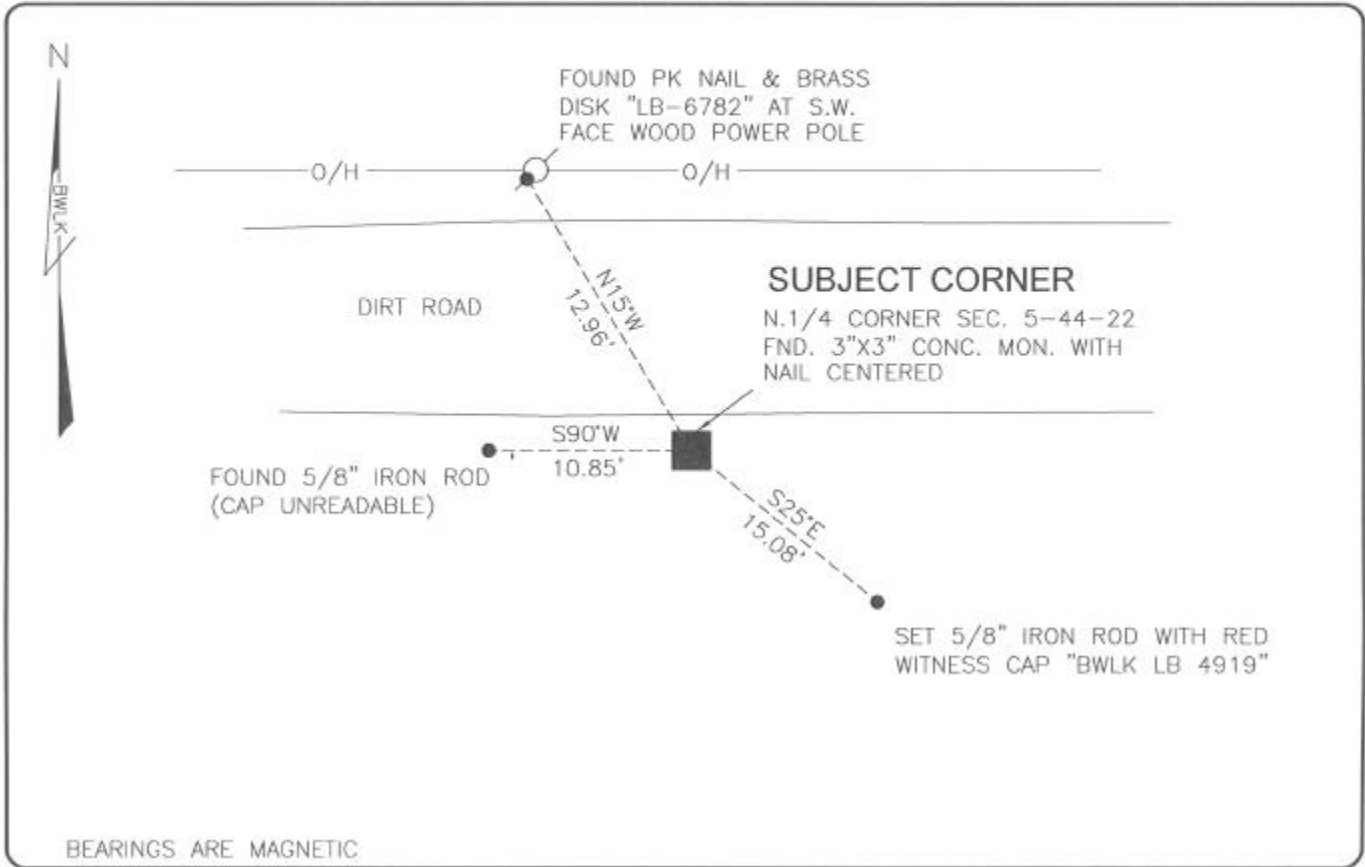


LAND CORNER RECORD

**PUBLIC WORKS
LEE COUNTY, FLORIDA**

Address - 1500 Monroe St., Ft. Myers, Fla. 33901

Phone : (239) 479-8900



BEARINGS ARE MAGNETIC

COMMENTS:

FOUND CONCRETE MONUMENT IS IN HARMONY WITH HISTORICAL RECORDS INCLUDING KREAMERS AVACADO (P.B.5 PG.21)-PLAT DIMENSIONS ONLY, FLORIDA STATE PROPERTIES, INC.-UNIT NO.4 PINE ISLAND (AN UNRECORDED PLAT).

CORNER DESCRIPTION

N1/4 Corner
Section 5
Township 44
Range 22



HORIZONTAL POSITION INFORMATION

Florida West Zone, NAD 1983(1990 Adjustment)
Northing(ft) 852569.08 Easting(ft) 612788.60
Latitude 26°40'44.9742" Longitude 82°07'58.2312"
Scale Factor 0.99994

EXISTING CERTIFIED CORNER RECORDS

Document No.	Date
NONE	NONE

The above documents are based on FDEP Bureau of Surveying and Mapping Record Information.

I hereby certify the monument and accessories shown above were field located on 8-11-04.

Scott C. Whitaker
SCOTT C. WHITAKER
Professional Surveyor and Mapper
Florida Certificate No. 4324
Date Signed 9-03-04

BEAN, WHITAKER, LUTZ & KAREH, INC. (LB 4919)
13041 McGregor Boulevard
Fort Myers, Florida 33919-5910
Phone: (239) 481-1331

POINT NO. 11591

BLM REFERENCE NO. T44SR22E240700