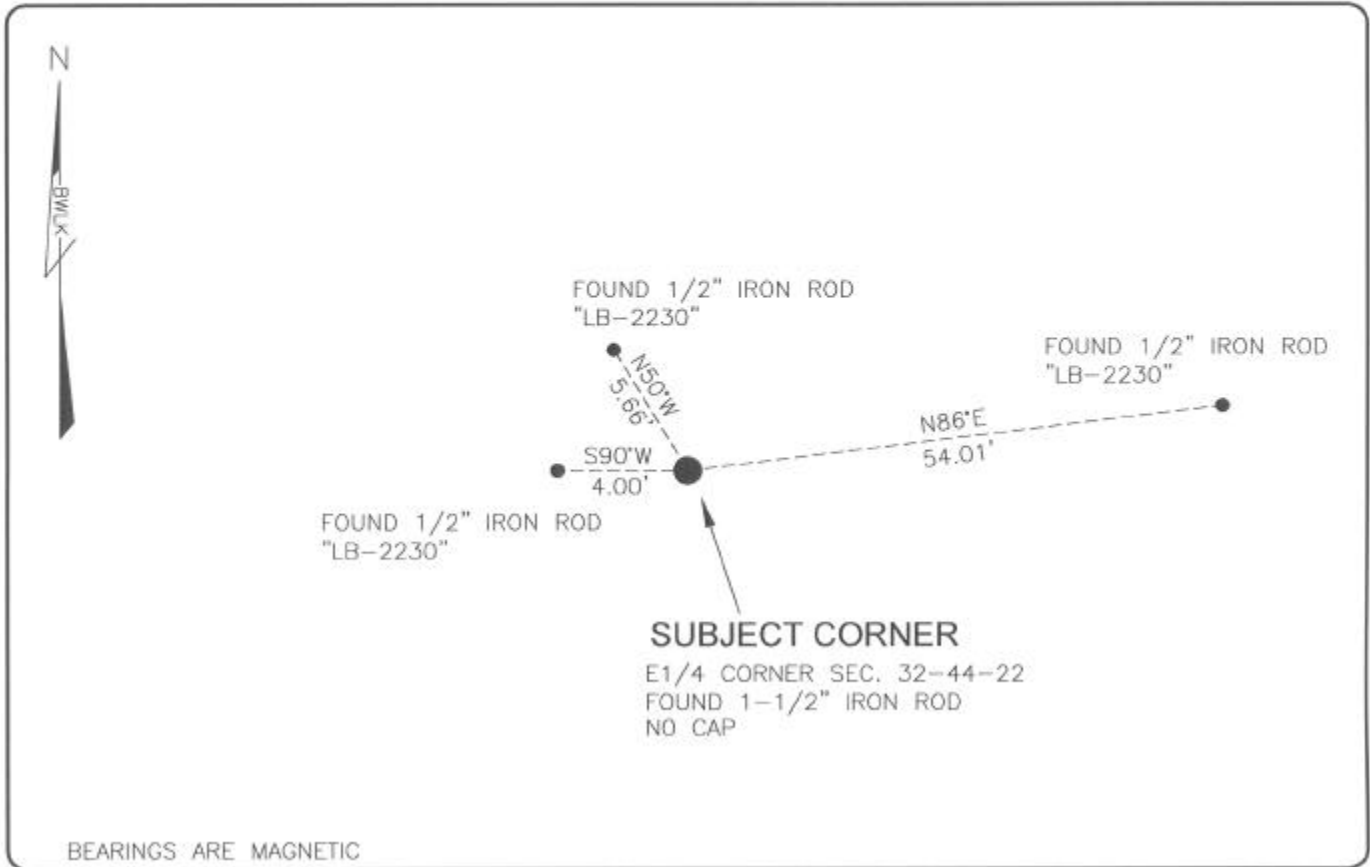


LAND CORNER RECORD

PUBLIC WORKS
LEE COUNTY, FLORIDA

Address - 1500 Monroe St., Ft. Myers, Fla. 33901

Phone : (239) 479-8900



COMMENTS:

CORNER FOUND AT SAME LOCATION NOTED IN C.C.R.#41310. OBSERVED CO-ORDINATES DIFFER FROM THOSE SHOWN ON CCR.

CORNER DESCRIPTION

E1/4 Corner
Section 32
Township 44
Range 22



HORIZONTAL POSITION INFORMATION

Florida West Zone, NAD 1983(1990 Adjustment)

Northing(ft) 823414.01 Easting(ft) 615411.99

Latitude 26°35'56.2481" Longitude 82°07'28.9954"

Scale Factor 0.99994

EXISTING CERTIFIED CORNER RECORDS

Document No.	Date
<u>41310</u>	<u>12-12-91</u>

The above documents are based on FDEP Bureau of Surveying and Mapping Record Information.

I hereby certify the monument and accessories shown above were field located on 5-05-04.

Scott C. Whitaker
SCOTT C. WHITAKER
 Professional Surveyor and Mapper
 Florida Certificate No. 4324
 Date Signed 9-03-04

BEAN, WHITAKER, LUTZ & KAREH, INC. (LB 4919)
 13041 McGregor Boulevard
 Fort Myers, Florida 33919-5910
 Phone: (239) 481-1331

POINT NO. 11045

BLM REFERENCE NO. T44SR22E300140