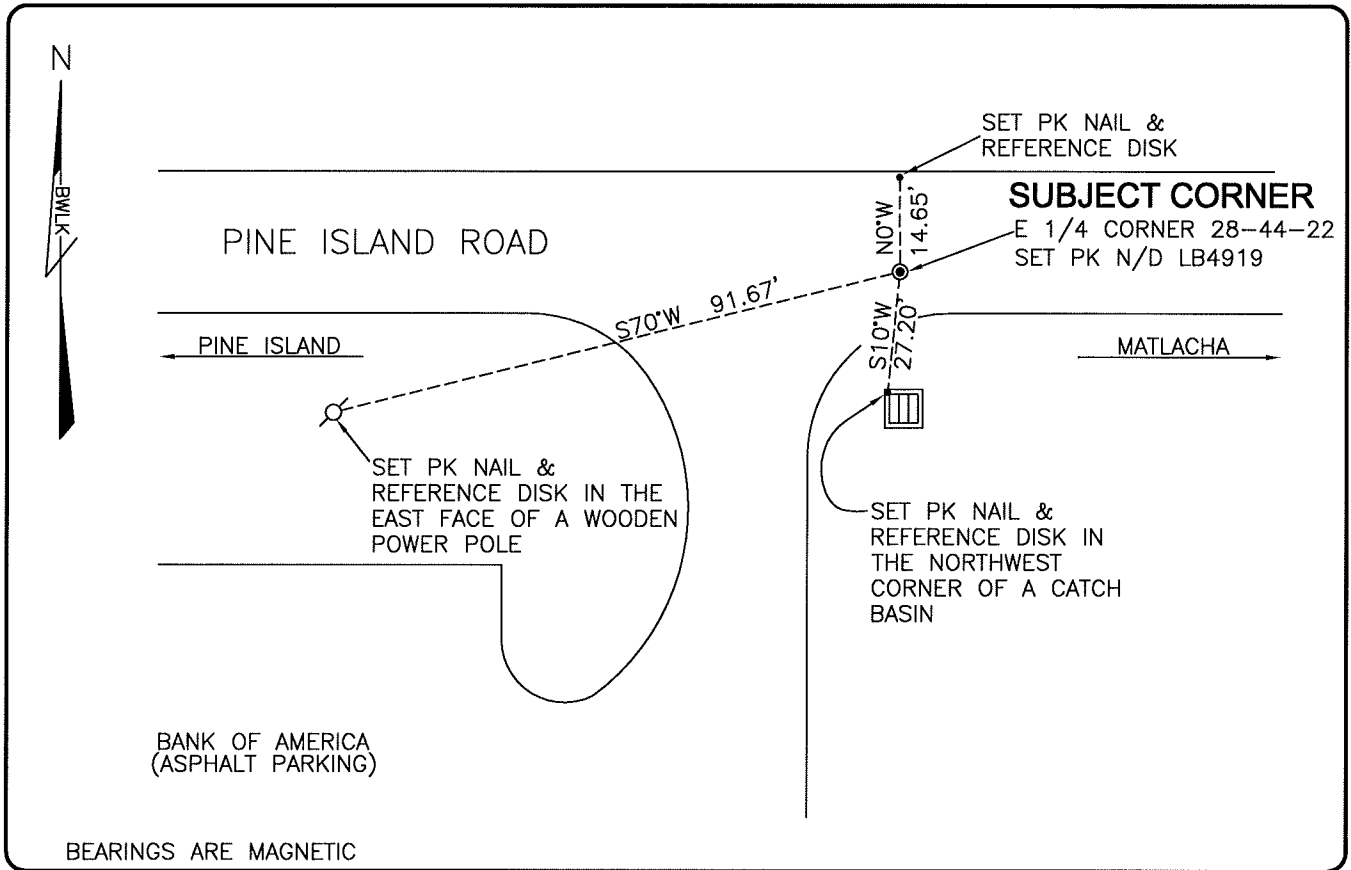


**LAND CORNER RECORD**

**PUBLIC WORKS  
LEE COUNTY, FLORIDA**

Address - 1500 Monroe St., Ft. Myers, Fla. 33901

Phone : (239) 479-8900

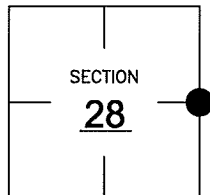


BEARINGS ARE MAGNETIC

**COMMENTS:** CORNER RESET ACCORDING TO OLD SURVEY BY CARL E. JOHNSON DATED 1949

**CORNER DESCRIPTION**

E 1/4 Corner  
Section 28  
Township 44  
Range 22



**HORIZONTAL POSITION INFORMATION**

Florida West Zone, NAD 1983(1990 Adjustment)  
Northing(ft) 828811.34 Easting(ft) 620439.61  
Latitude 26°36'49.7491" Longitude 82°06'33.6568"  
Scale Factor 0.99994

**EXISTING CERTIFIED CORNER RECORDS**

Document No.	Date
<u>NONE</u>	<u>NONE</u>

The above documents are based on FDEP Bureau of Surveying and Mapping Record Information.

I hereby certify the monument and accessories shown above were field located on 4-5-07.

*Scott C. Whitaker*  
**SCOTT C. WHITAKER**  
Professional Surveyor and Mapper  
Florida Certificate No. 4324  
Date Signed 5/14/07  
BEAN, WHITAKER, LUTZ & KAREH, INC. (LB 4919)  
13041 McGregor Boulevard  
Fort Myers, Florida 33919-5910  
Phone: (239) 481-1331

POINT NO. 11660

BLM REFERENCE NO. T44SR22E400240