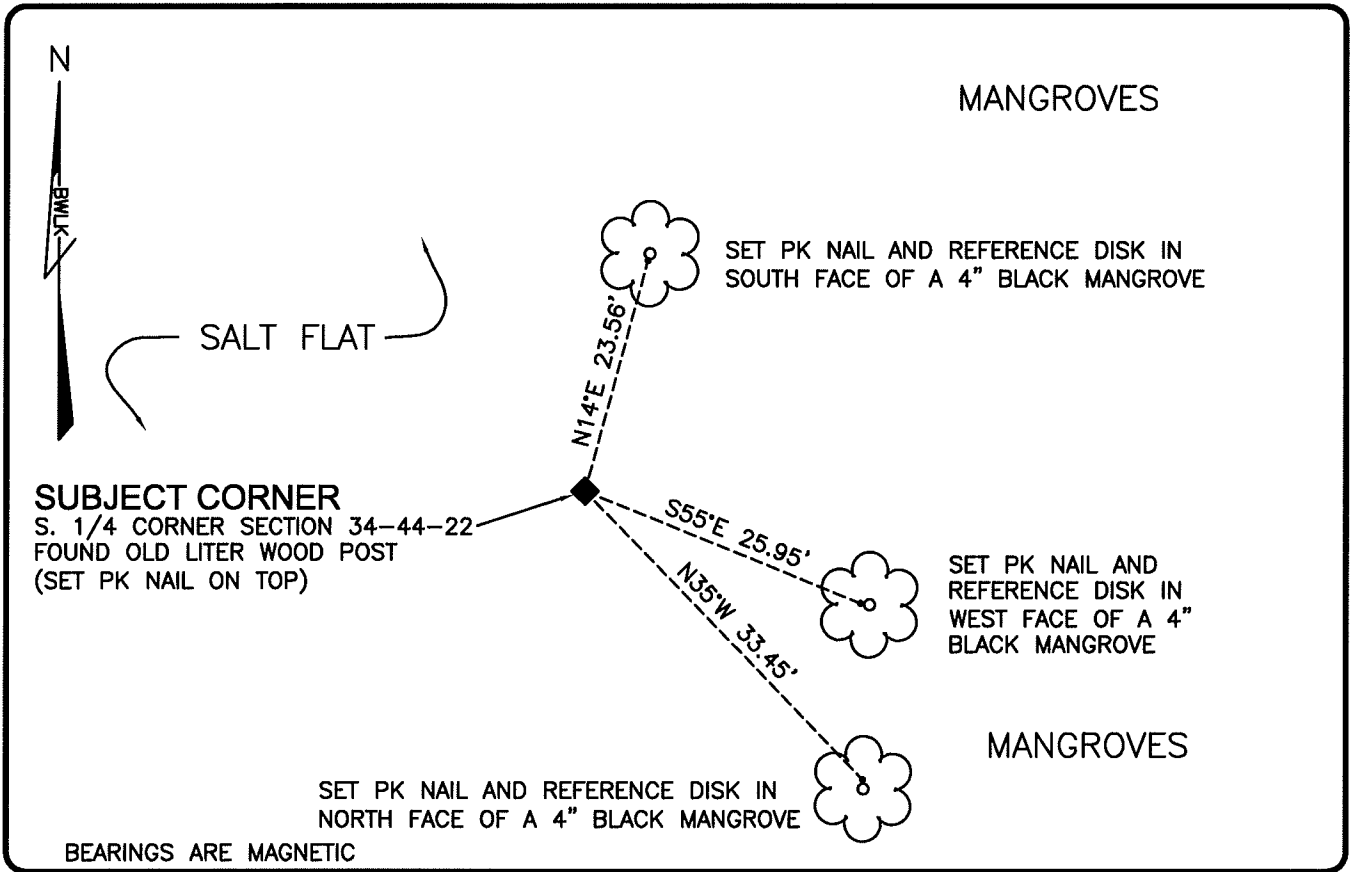


LAND CORNER RECORD

PUBLIC WORKS  
LEE COUNTY, FLORIDA

Address - 1500 Monroe St., Ft. Myers, Fla. 33901

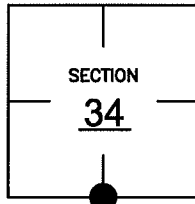
Phone : (239) 479-8900



COMMENTS: FOUND CORNER AS PER SURVEY BY LESTER BULSON OF CARL E. JOHNSON, INC., DATED 1972

CORNER DESCRIPTION

S 1/4 Corner  
Section 34  
Township 44  
Range 22



HORIZONTAL POSITION INFORMATION

Florida West Zone, NAD 1983(1990 Adjustment)

Northing(ft) 820942.169 Easting(ft) 623411.349

Latitude 26°35'31.8363" Longitude 82°06'00.8450"

Scale Factor 0.99994

EXISTING CERTIFIED CORNER RECORDS

Document No.	Date
NONE	NONE

The above documents are based on FDEP Bureau of Surveying and Mapping Record Information.

I hereby certify the monument and accessories shown above were field located on 4-13-07.

*Scott C. Whitaker*  
SCOTT C. WHITAKER  
Professional Surveyor and Mapper  
Florida Certificate No. 4324  
Date Signed 5/14/07

BEAN, WHITAKER, LUTZ & KAREH, INC. (LB 4919)  
13041 McGregor Boulevard  
Fort Myers, Florida 33919-5910  
Phone: (239) 481-1331

POINT NO. 11679

BLM REFERENCE NO. T44SR22E440100