

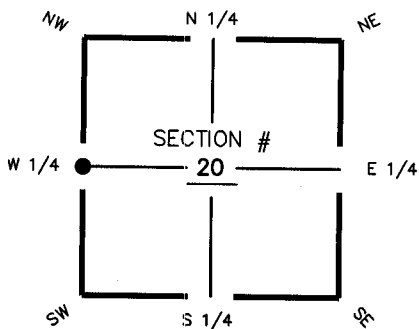
FLORIDA DEPARTMENT OF ENVIRONMENTAL PROTECTION CERTIFIED CORNER RECORD

P-5

DOC. # 080946

CORNER DESCRIPTION: MONUMENTATION DESCRIPTION (EVIDENCE FOUND OR METHOD TO SET)

Depict corner with



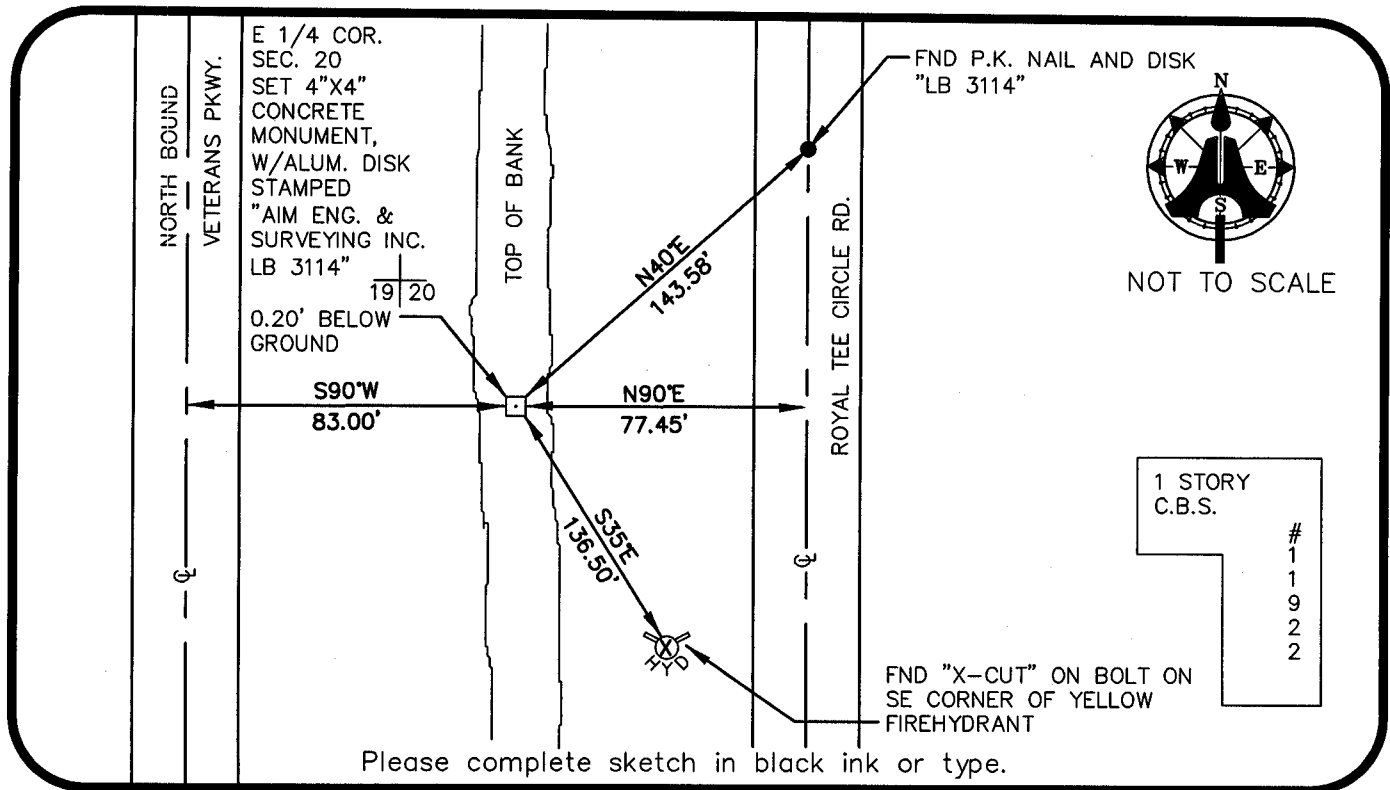
SET 4"x4" CONCRETE MONUMENT,
W/ALUM. DISK STAMPED
"AIM ENG. & SURVEYING INC. LB 3114"

19|20
0.20' BELOW GROUND

HORIZONTAL POSITION INFORMATION (if determined):

Latitude 26° 37' 48.7200" N Longitude 82° 02' 24.5791" W
 Y(NORTHING-Ft.) 834752.34 X(EASTING-Ft.) 643047.00 Zone FL W
 Convergence -00° 01' 04.8" Scale factor 0.99994137
 Coordinate determination (circle one): Field traverse GPS
 Horizontal datum (circle one): NAD27 NAD83(1986) NAD83(1990) other (explain)
 Accuracy (circle one): 1st 2nd 3rd other _____

W 1/4 corner of Section 20
 Twp 44 S, Rge 23 E
 Tallahassee Base Meridian,
LEE County(s), Florida



1 STORY
C.B.S.

1
1
9
2
2

Please complete sketch in black ink or type.

SURVEYORS CERTIFICATE:

I certify the monument and accessories indicated above were field located on JULY 22, 2003

[Signature] 5688
 SIGNATURE PSM NO.
AIM ENGINEERING & SURVEYING, INC. LB 3114
 FIRM OR AGENCY LB NO.
5300 LEE BOULEVARD
 ADDRESS
LEHIGH ACRES, FLORIDA 33971-1026
 CITY STATE ZIP
(239) 332-4569 12/20/2003
 PHONE NUMBER DATE

SEND ORIGINAL TO:
 Department of Environmental Protection
 Bureau of Surveying and Mapping
 3900 Commonwealth Boulevard
 Mail Station 105
 Tallahassee, Florida 32399

D.E.P. USE ONLY

Processed: 12-31-2003 CH
 B.L.M. - I.D. 200 340
 QUAD - I.D. 2217 Matlacha

EMBOSSSED SEAL OVER SIGNATURE