

FLORIDA DEPARTMENT OF ENVIRONMENTAL PROTECTION CERTIFIED CORNER RECORD

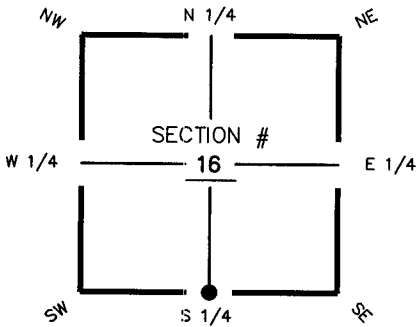
N-11

DOC. # 080928

CORNER DESCRIPTION: MONUMENTATION DESCRIPTION (EVIDENCE FOUND OR METHOD TO SET)

Depict corner with

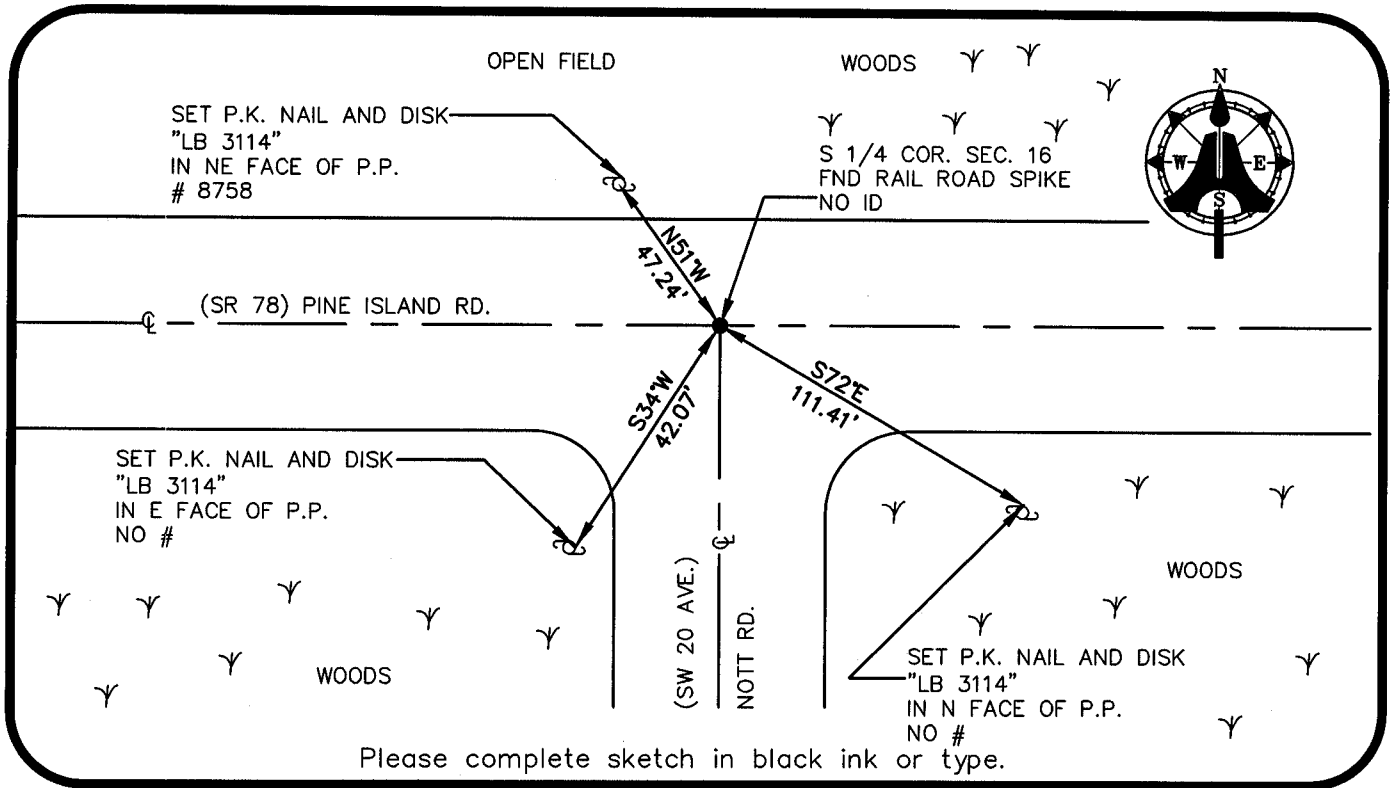
FOUND RAIL ROAD SPIKE NO ID



S 1/4 corner of Section 16
Twp 44 S, Rge 23 E
Tallahassee Base Meridian,
LEE County(s), Florida

HORIZONTAL POSITION INFORMATION (if determined):

Latitude 26° 38' 15.8281" N Longitude 82° 00' 55.3596" W
Y(NORTHING-Ft.) 837487.65 X(EASTING-Ft.) 651143.46 Zone FL W
Convergence -00° 00' 24.8" Scale factor 0.99994121
Coordinate determination (circle one): Field traverse GPS
Horizontal datum (circle one): NAD27 NAD83(1986) NAD83(1990) other (explain)
Accuracy (circle one): 1st 2nd 3rd other _____



Please complete sketch in black ink or type.

SURVEYORS CERTIFICATE:

I certify the monument and accessories indicated above were field located on MAY 30, 2003

FIRM OR AGENCY **AIM ENGINEERING & SURVEYING, INC.** PSM NO. **5688**
5300 LEE BOULEVARD
LEHIGH ACRES, FLORIDA 33971-1026
(239) 332-4569
PHONE NUMBER DATE 12/20/2003

SEND ORIGINAL TO:
Department of Environmental Protection
Bureau of Surveying and Mapping
3900 Commonwealth Boulevard
Mail Station 105
Tallahassee, Florida 32399

D.E.P. USE ONLY

Processed: 12-31-2003 CH
B.L.M. - I.D. 34040
QUAD - I.D. 2217 Matlacha

EMBOSSSED SEAL OVER SIGNATURE