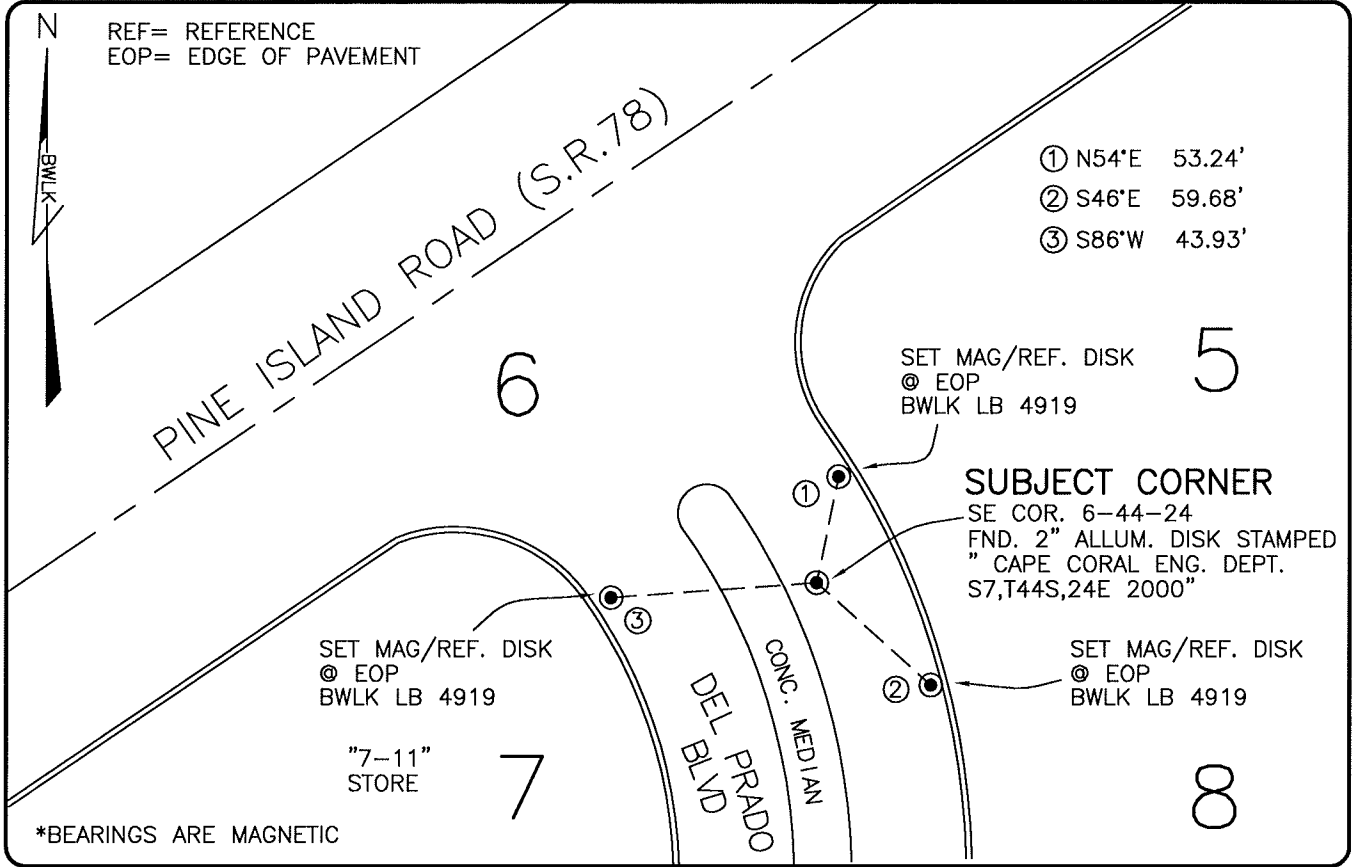


LAND CORNER RECORD

PUBLIC WORKS  
LEE COUNTY, FLORIDA

Address - 1500 Monroe St., Ft. Myers, Fla. 33901

Phone : (239) 479-8900

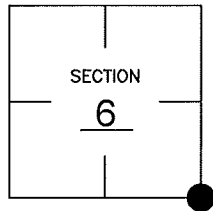


COMMENTS:

CORNER AND REFERENCES IN CCR 22724 ARE GONE.  
CORNER NOW IN PLACE IS IN HARMONY WITH HISTORICAL RECORDS.

CORNER DESCRIPTION

SE Corner  
Section 6  
Township 44  
Range 24



HORIZONTAL POSITION INFORMATION

Florida West Zone, NAD 1983(1990 Adjustment)  
Northing(ft) 848179.74 Easting(ft) 675417.38  
Latitude 26°40'01.68182" N. Longitude 81°56'27.78840" W.  
Scale Factor .99994

EXISTING CERTIFIED CORNER RECORDS

Document No.	Date
<u>22724</u>	<u>2-24-86</u>

The above documents are based on FDEP Bureau of Surveying and Mapping Record Information.

I hereby certify the monument and accessories shown above were field located on 2-24-05.

*Scott C. Whitaker*  
SCOTT C. WHITAKER  
Professional Surveyor and Mapper  
Florida Certificate No. 4324  
Date Signed 2/4/05

BEAN, WHITAKER, LUTZ & KAREH, INC. (LB 4919)  
13041 McGregor Boulevard  
Fort Myers, Florida 33919-5910  
Phone: (239) 481-1331

POINT NO. 10124

BLM REFERENCE NO. T44SR24E200600