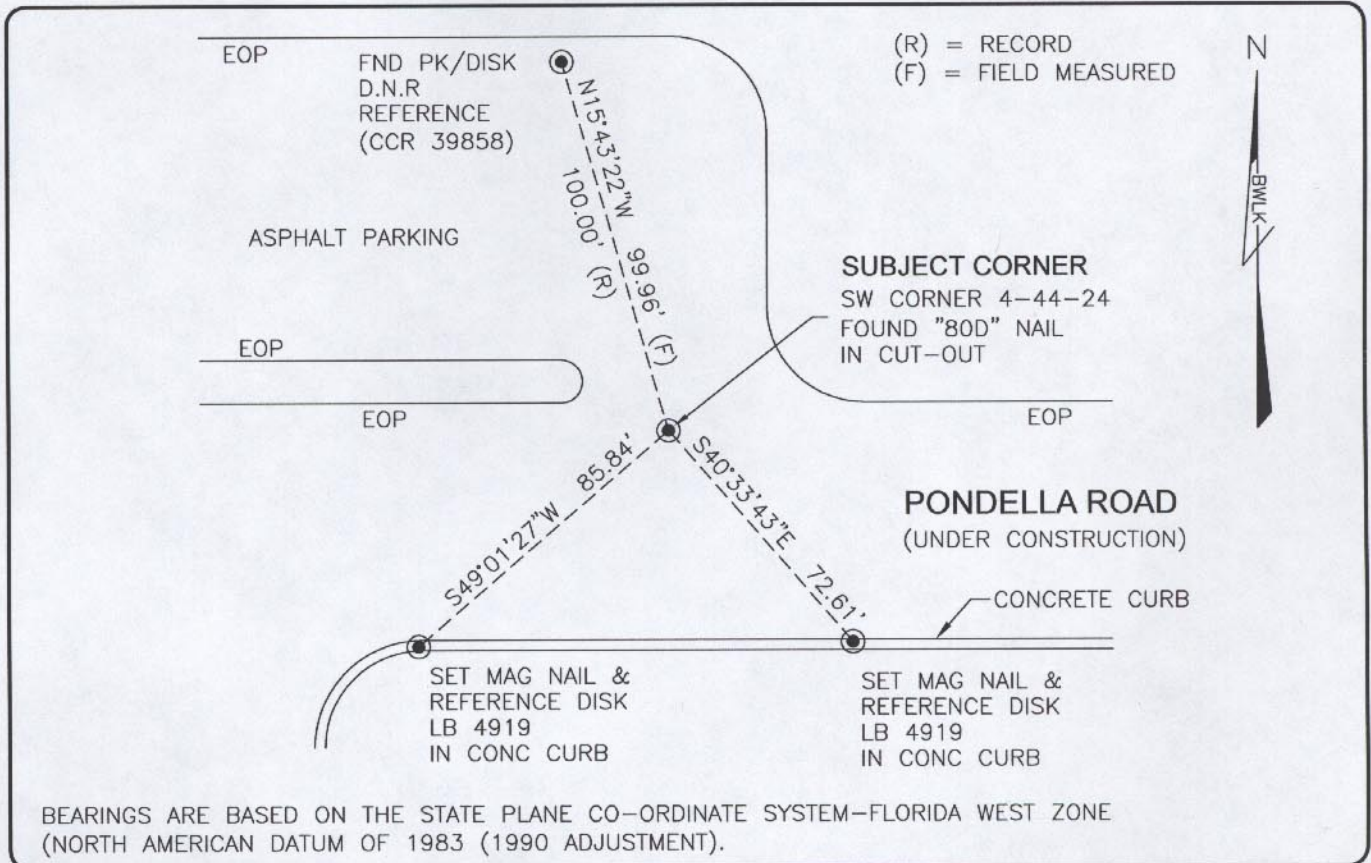


LAND CORNER RECORD

**PUBLIC WORKS
LEE COUNTY, FLORIDA**

Address - 1500 Monroe St., Ft. Myers, Fla. 33901

Phone : (239) 479-8900

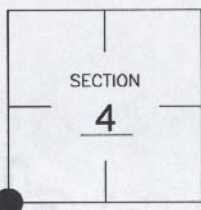


COMMENTS:

CORNER RECOVERED AND VERIFIED BY REFERENCES FROM C.C.R.#39858, CONFIRMED LOCATION WITH R/W MAPS FOR S.R. 78 AND PONDELLA ROAD.

CORNER DESCRIPTION

SW Corner
Section 4
Township 44
Range 24



HORIZONTAL POSITION INFORMATION

Florida West Zone, NAD 1983(1990 Adjustment)
Northing(ft) 848269.17 Easting(ft) 681184.00
Latitude 26°40'02.5371" Longitude 81°55'24.2190"
Scale Factor 0.99994

EXISTING CERTIFIED CORNER RECORDS

Document No.	Date
<u>14515</u>	<u>6-14-04</u>
<u>19091</u>	<u>11-07-83</u>
<u>18385</u>	<u>1-30-84</u>

The above documents are based on FDEP Bureau of Surveying and Mapping Record Information.

I hereby certify the monument and accessories shown above were field located on 7-07-04.

Scott C. Whitaker
SCOTT C. WHITAKER
Professional Surveyor and Mapper
Florida Certificate No. 4324
Date Signed 4/12/05

BEAN, WHITAKER, LUTZ & KAREH, INC. (LB 4919)
13041 McGregor Boulevard
Fort Myers, Florida 33919-5910
Phone: (239) 481-1331

POINT NO. 9120

BLM REFERENCE NO. T44SR24E300600