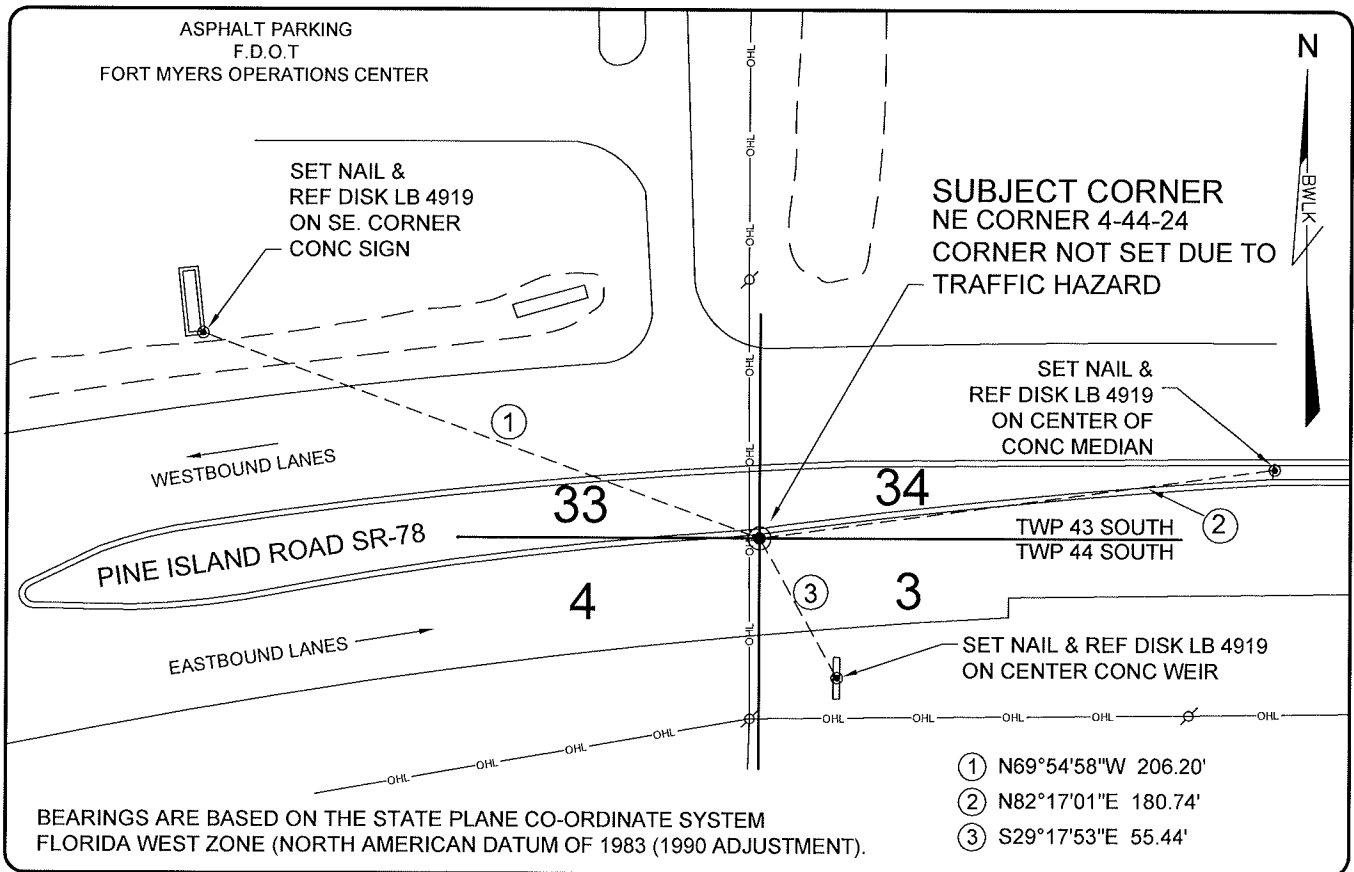


LAND CORNER RECORD

**PUBLIC WORKS
LEE COUNTY, FLORIDA**

Address - 1500 Monroe St., Ft. Myers, Fla. 33901

Phone : (239) 479-8900

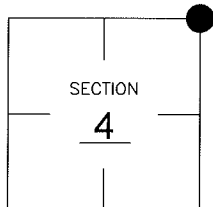


COMMENTS:

THE SUBJECT CORNER AND REFERENCES WERE GONE. RE-ESTABLISHED CORNER FROM HISTORICAL RECORDS PERFORMED IN 1982 AND CONFIRMED WITH FDOT R/W MAPS FOR S.R. 78 SECTION 12060-2519 DATED 1990.

CORNER DESCRIPTION

NE Corner
Section 4
Township 44
Range 24



HORIZONTAL POSITION INFORMATION

Florida West Zone, NAD 1983(1990 Adjustment)

Northing(ft) 853673.76 Easting(ft) 685995.63

Latitude 26°40'56.03278" N. Longitude 81°54'31.13503" W.

Scale Factor 0.99994

EXISTING CERTIFIED CORNER RECORDS

Document No.	Date
<u>26247</u>	<u>07-10-87</u>

The above documents are based on FDEP Bureau of Surveying and Mapping Record Information.

I hereby certify the monument and accessories shown above were field located on 08-11-05.

Scott C. Whitaker
SCOTT C. WHITAKER
Professional Surveyor and Mapper
Florida Certificate No. 4324
Date Signed 08-11-05

BEAN, WHITAKER, LUTZ & KAREH, INC. (LB 4919)
13041 McGregor Boulevard
Fort Myers, Florida 33919-5910
Phone: (239) 481-1331

POINT NO. 10126

BLM REFERENCE NO. T44SR24E400700