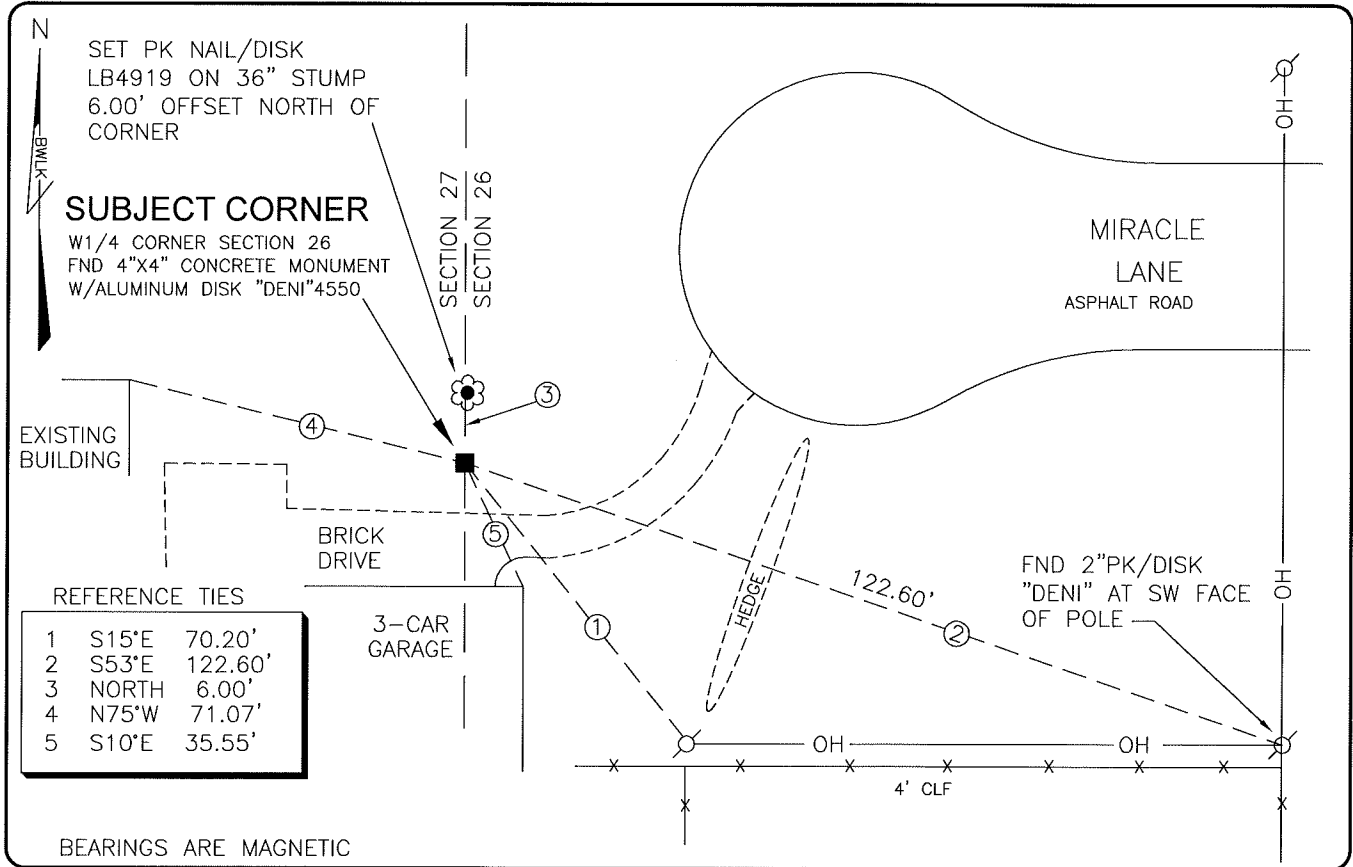


LAND CORNER RECORD

**PUBLIC WORKS
LEE COUNTY, FLORIDA**

Address - 1500 Monroe St., Ft. Myers, Fla. 33901

Phone : (239) 479-8900



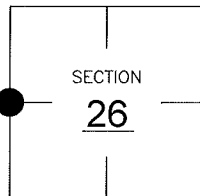
BEARINGS ARE MAGNETIC

COMMENTS:

FOUND 2 OUT OF 3 REFERENCES AND CONFIRMED CO-ORDINATES AS SHOWN IN CCR49260. FND 4"x4" CONCRETE MONUMENT WITH 3" ALUMINUM DISK "DENI" AT 1/4 CORNER PER CCR.

CORNER DESCRIPTION

W1/4 Corner
Section 26
Township 44
Range 24



HORIZONTAL POSITION INFORMATION

Florida West Zone, NAD 1983(1990 Adjustment)

Northing(ft) 830565.49 Easting(ft) 692658.99

Latitude 26d37'07.11577" N. Longitude 81d53'17.89422" W.

Scale Factor 0.99994

EXISTING CERTIFIED CORNER RECORDS

Document No. 49260 Date 7-13-94

The above documents are based on FDEP Bureau of Surveying and Mapping Record Information.

I hereby certify the monument and accessories shown above were field located on 7-19-05.

Scott C. Whitaker

SCOTT C. WHITAKER
Professional Surveyor and Mapper
Florida Certificate No. 4324
Date Signed 8-06-05

BEAN, WHITAKER, LUTZ & KAREH, INC. (LB 4919)
13041 McGregor Boulevard
Fort Myers, Florida 33919-5910
Phone: (239) 481-1331

POINT NO. 9254

BLM REFERENCE NO. T44SR24E500240