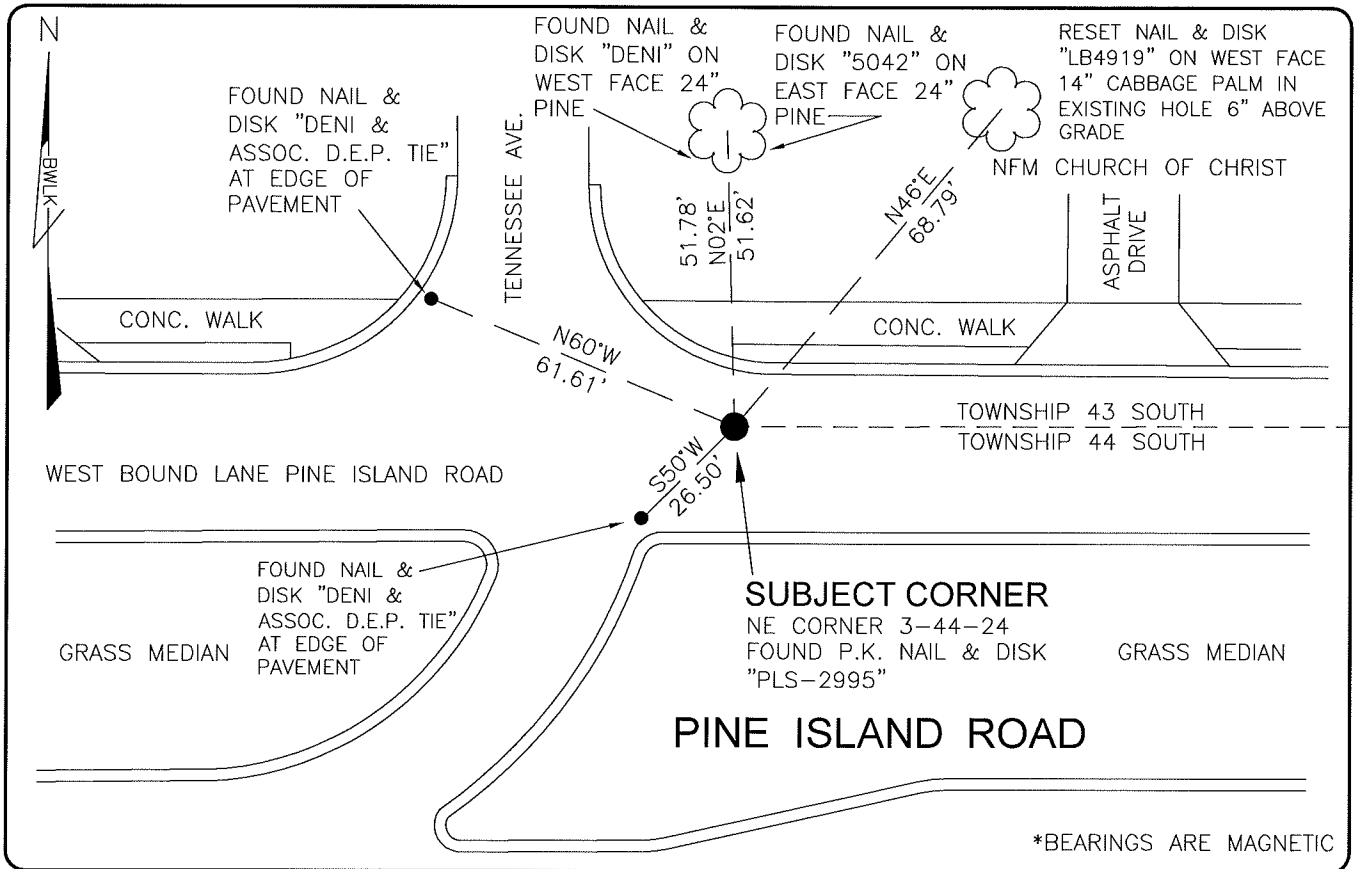


LAND CORNER RECORD

**PUBLIC WORKS
LEE COUNTY, FLORIDA**

Address -- 1500 Monroe St., Ft. Myers, Fla. 33901

Phone : (239) 479-8900



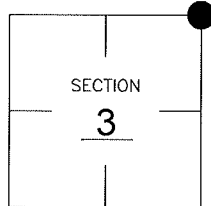
*BEARINGS ARE MAGNETIC

COMMENTS:

FOUND PK NAIL & DISK "PLS-2995" VERIFIED LOCATION BY REFERENCES FROM C.C.R.#55644. CONFIRMED AND HELD CO-ORDINATE VALUES IN CCR 55644.

CORNER DESCRIPTION

NE Corner
Section 3
Township 44
Range 24



HORIZONTAL POSITION INFORMATION

Florida West Zone, NAD 1983(1990 Adjustment)

Northing(ft) 853666.26 Easting(ft) 691665.46

Latitude 26°40'55.91451 Longitude 81°53'28.62511

Scale Factor 0.99994

EXISTING CERTIFIED CORNER RECORDS

Document No.	Date
<u>32944</u>	<u>4-11-89</u>
<u>55644</u>	<u>1-30-96</u>

The above documents are based on FDEP Bureau of Surveying and Mapping Record Information.

I hereby certify the monument and accessories shown above were field located on 8-05-05.

Scott C. Whitaker

SCOTT C. WHITAKER
Professional Surveyor and Mapper
Florida Certificate No. 4324
Date Signed 8-05-05

BEAN, WHITAKER, LUTZ & KAREH, INC. (LB 4919)
13041 McGregor Boulevard
Fort Myers, Florida 33919-5910
Phone: (239) 481-1331

POINT NO. 10079

BLM REFERENCE NO. T44SR24E500700