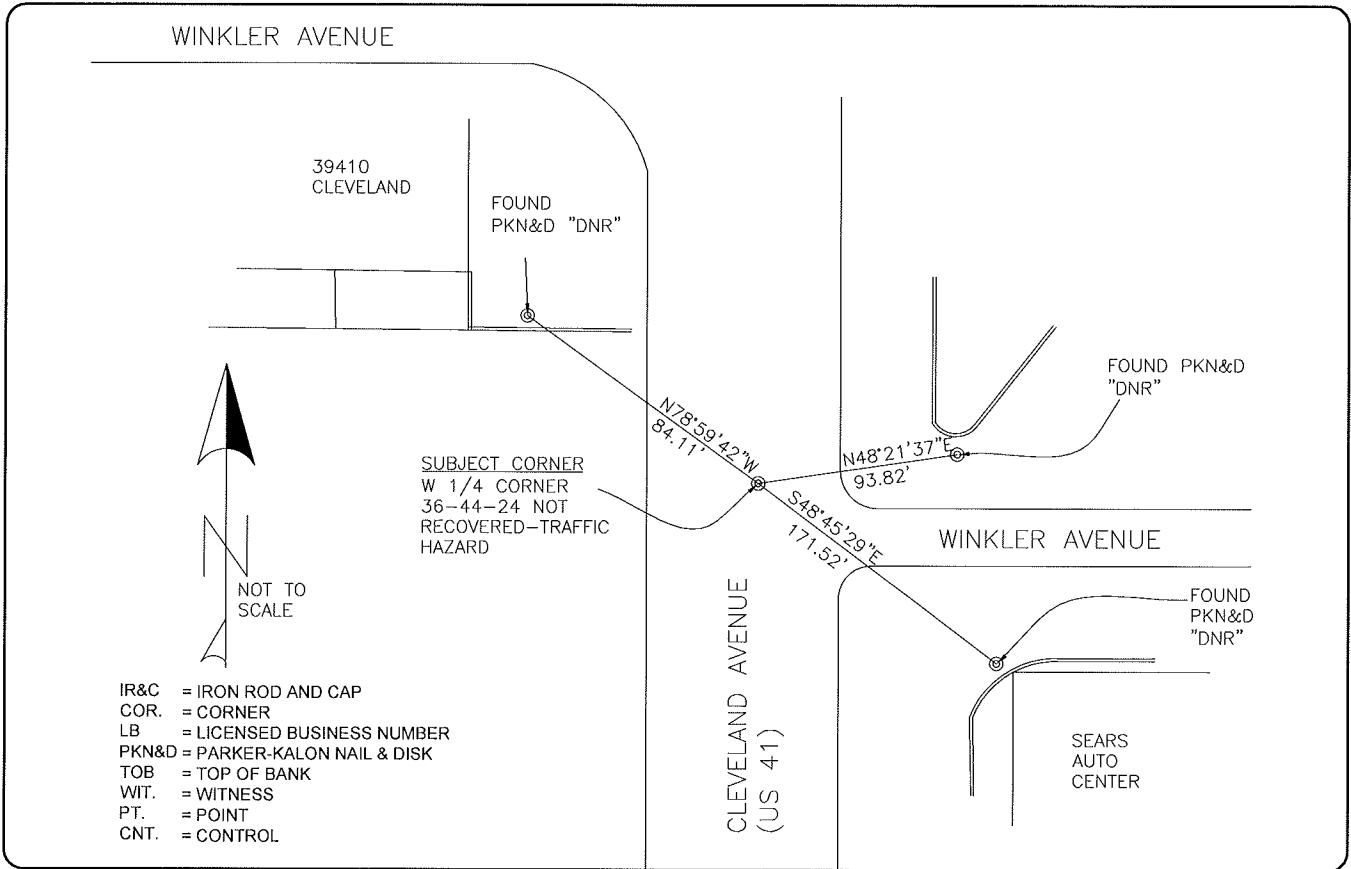


LAND CORNER RECORD

**PUBLIC WORKS
LEE COUNTY, FLORIDA**

Address - 1500 Monroe St., Ft. Myers, Fla. 33901

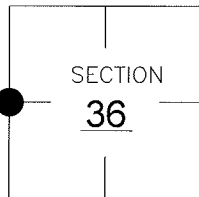
Phone : (239) 479-8900



GENERALLY ACCEPTED CORNER BY LOCAL SURVEYORS.
REFERENCES FOUND AS SHOWN ON CCR# 049269.
HELD COORDINATE VALUES IN CCR# 049269

CORNER DESCRIPTION

W1/4 Corner
Section 36
Township 44
Range 24



HORIZONTAL POSITION INFORMATION

Florida West Zone, NAD 1983(1990 Adjustment)
Northing(ft) 825367.5240 Easting(ft) 698035.7960
Latitude 26°36'15.58" N Longitude 081°52'18.70" W
Scale Factor 0.99994

EXISTING CERTIFIED CORNER RECORDS

Document No.	Date
<u>0049269</u>	<u>7-12-94</u>

The above documents are based on FDEP Bureau of Surveying and Mapping Record Information.

I hereby certify the monument and accessories shown above were field located on 3-05-05.

[Signature]
DARREN TOWNSEND
Professional Surveyor and Mapper
Florida Certificate No. 6476
Date Signed 8/22/05
COONER & ASSOC, INC
5670 ZIP DRIVE
Fort Myers, Florida 33905
Phone: (239) 277-0722

POINT NO. 9524

BLM REFERENCE NO. T44SR24E600140