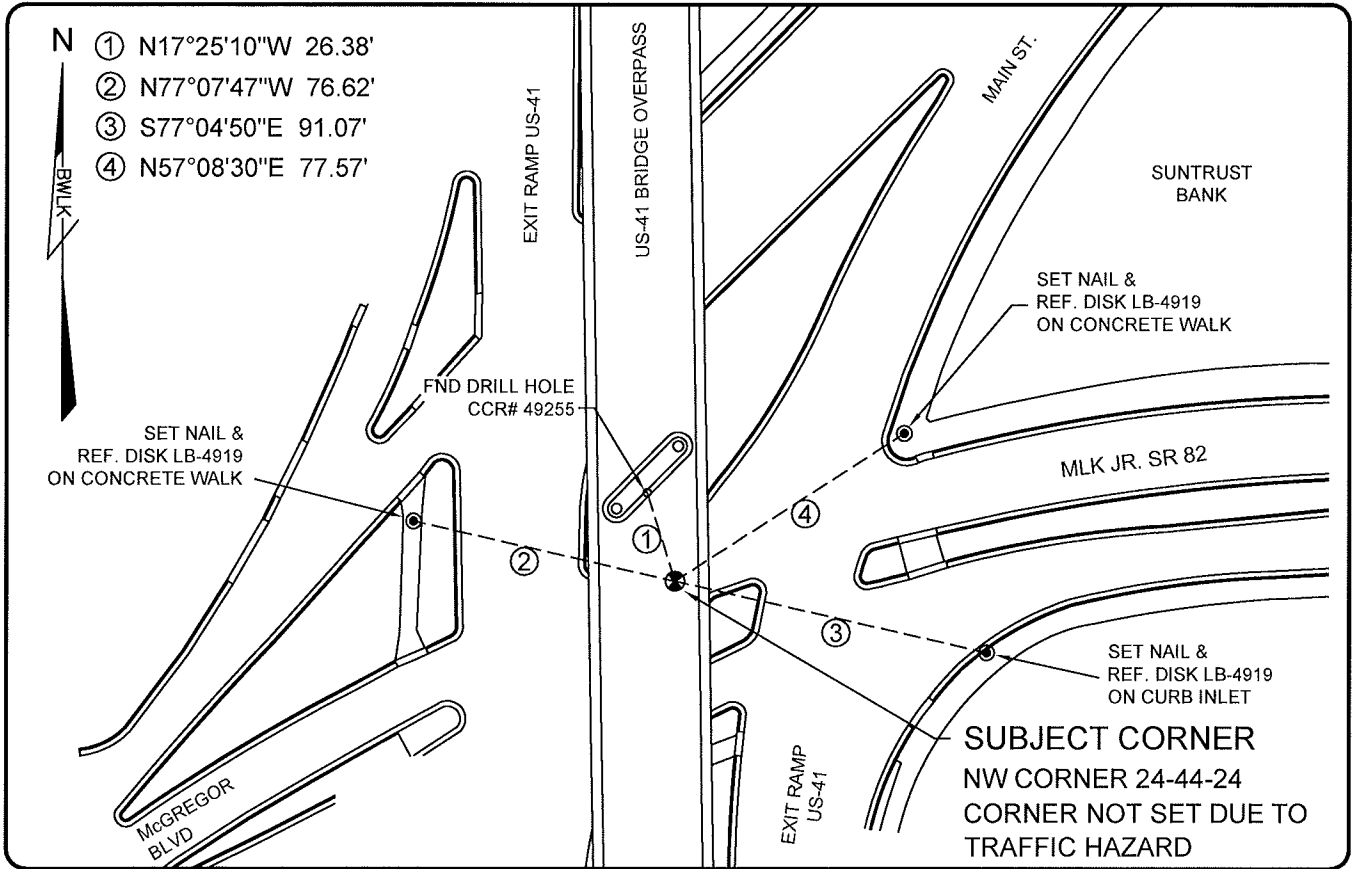


LAND CORNER RECORD

PUBLIC WORKS
LEE COUNTY, FLORIDA

Address - 1500 Monroe St., Ft. Myers, Fla. 33901

Phone : (239) 479-8900



COMMENTS:

THE SUBJECT CORNER WAS NOT FOUND, ONLY (1) OUT OF (3) REFERENCES WAS FOUND ACCORDING WITH CCR# 49255

CORNER DESCRIPTION

NW Corner	
Section	24
Township	44
Range	24

HORIZONTAL POSITION INFORMATION

Florida West Zone, NAD 1983(1990 Adjustment)
 Northing(ft) 838586.76 Easting(ft) 697747.38
 Latitude 26°38'26.51156" Longitude 81°52'21.73776"
 Scale Factor 0.99994

EXISTING CERTIFIED CORNER RECORDS

Document No.	Date
<u>49255</u>	<u>07-22-94</u>
<u>57310</u>	<u>08-09-96</u>
<u>31998</u>	<u>04-11-89</u>
_____	_____
_____	_____

The above documents are based on FDEP Bureau of Surveying and Mapping Record Information.

I hereby certify the monument and accessories shown above were field located on 08-10-2005.

Scott C. Whitaker

SCOTT C. WHITAKER
 Professional Surveyor and Mapper
 Florida Certificate No. 4324
 Date Signed 08-10-2005

BEAN, WHITAKER, LUTZ & KAREH, INC. (LB 4919)
 13041 McGregor Boulevard
 Fort Myers, Florida 33919-5910
 Phone: (239) 481-1331

POINT NO. 10091

BLM REFERENCE NO. T44SR24E600400