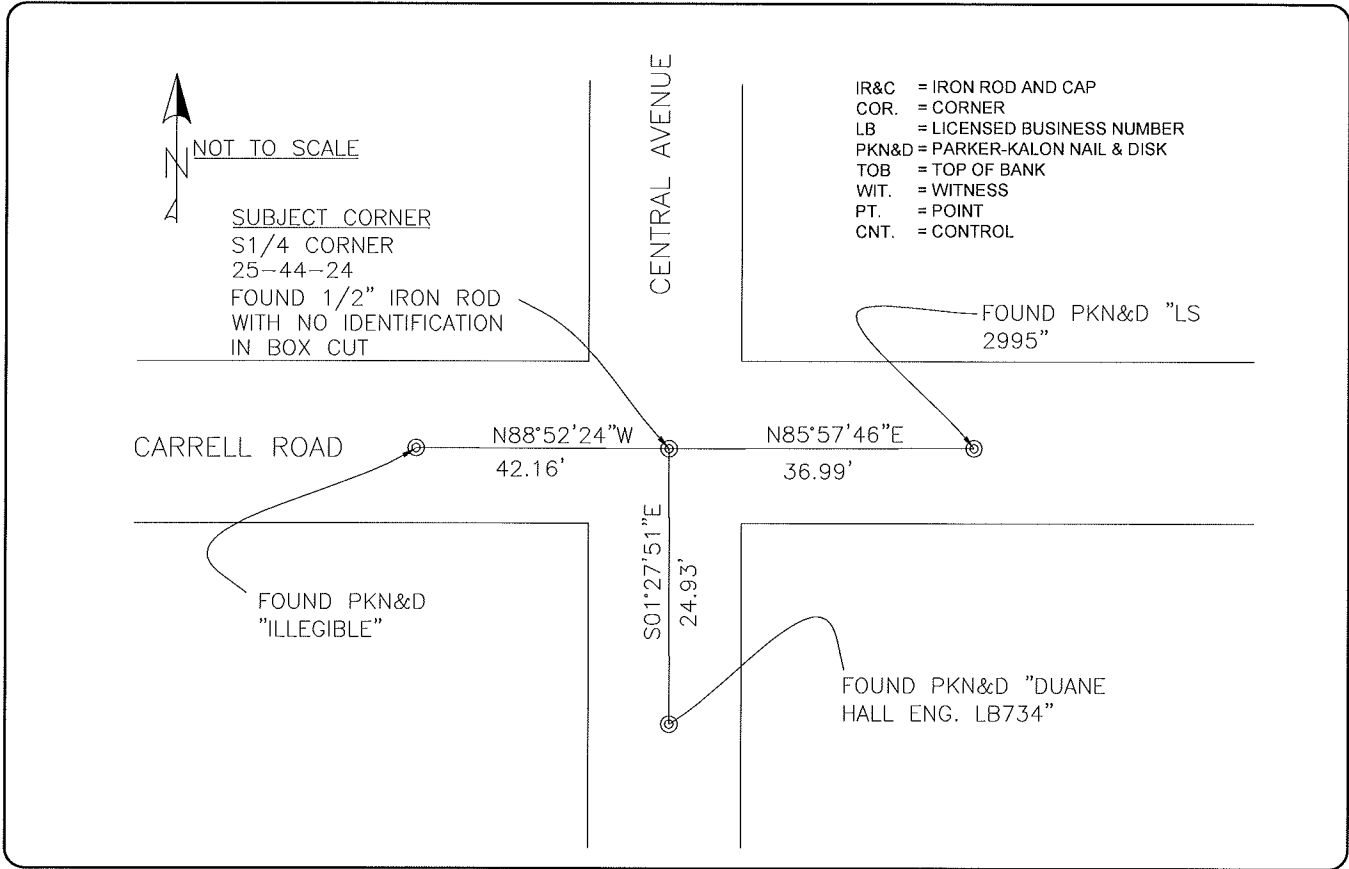


LAND CORNER RECORD

**PUBLIC WORKS
LEE COUNTY, FLORIDA**

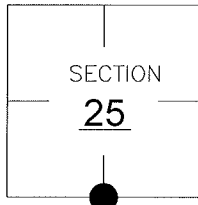
Address - 1500 Monroe St., Ft. Myers, Fla. 33901

Phone : (239) 479-8900



CORNER DESCRIPTION

S1/4 Corner
Section 25
Township 44
Range 24



GENERALLY ACCEPTED CORNER BY LOCAL SURVEYORS.
CORNER AND REFERENCES FOUND AS SHOWN ON CCR 57323.

HORIZONTAL POSITION INFORMATION

Florida West Zone, NAD 1983(1990 Adjustment)
Northing(ft) 828080.814 Easting(ft) 700637.941
Latitude 26°36'42.43" N Longitude 081°51'50.00" W
Scale Factor 0.99994

EXISTING CERTIFIED CORNER RECORDS

Document No.	Date
<u>057323</u>	<u>8-5-96</u>
<u>0024635</u>	<u>12-18-86</u>

The above documents are based on FDEP Bureau of Surveying and Mapping Record Information.

I hereby certify the monument and accessories shown above were field located on 3-05-05.

[Signature]

DARREN TOWNSEND
Professional Surveyor and Mapper
Florida Certificate No. 6476
Date Signed 3/22/05
COONER & ASSOC, INC
5670 ZIP DRIVE
Fort Myers, Florida 33905
Phone: (239) 277-0722