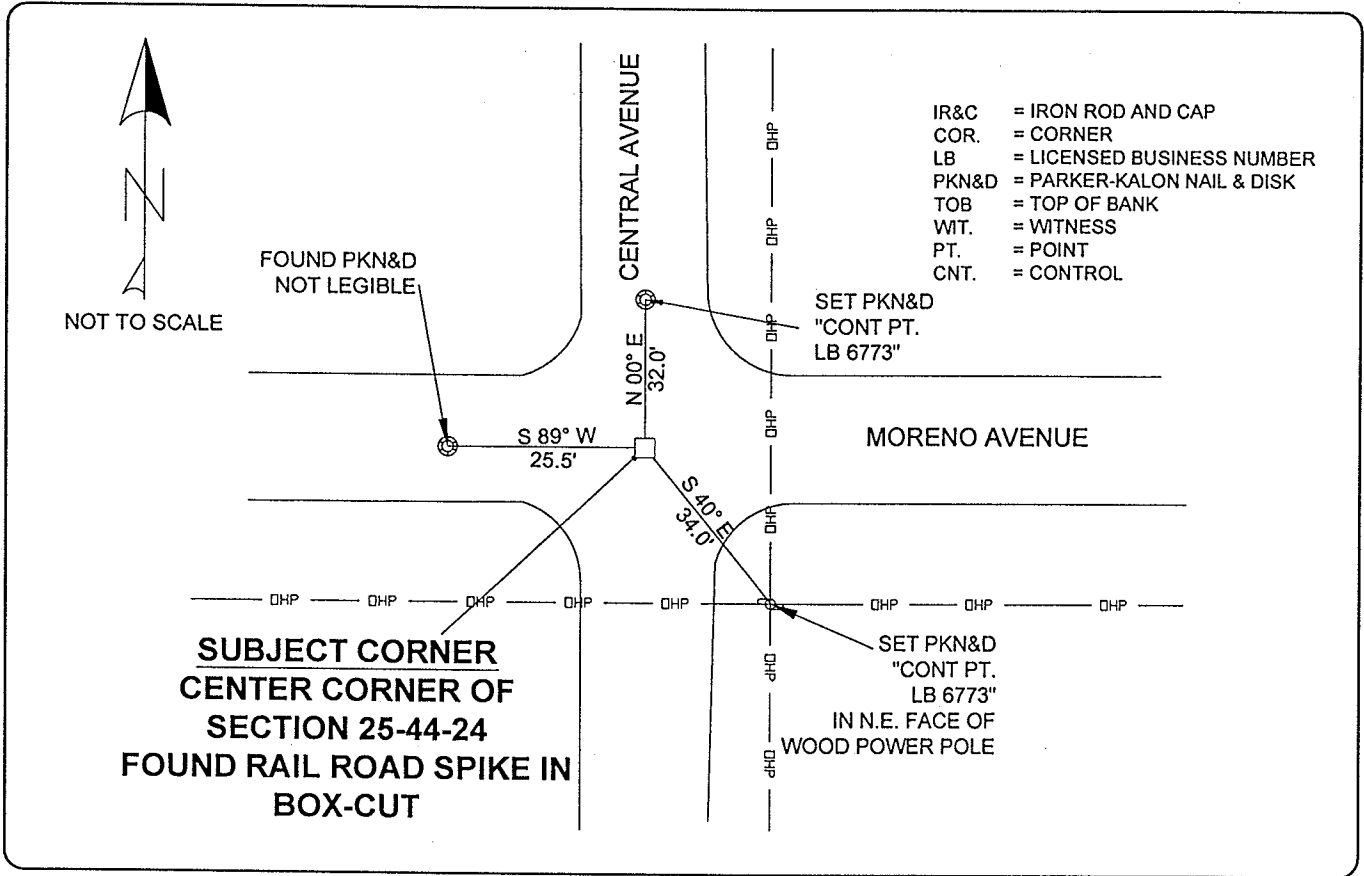


LAND CORNER RECORD

PUBLIC WORKS
LEE COUNTY, FLORIDA

Address - 1500 Monroe St., Ft. Myers, Fla. 33901

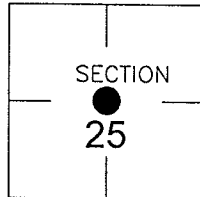
Phone : (239) 479-8900



**SUBJECT CORNER
CENTER CORNER OF
SECTION 25-44-24
FOUND RAIL ROAD SPIKE IN
BOX-CUT**

CORNER DESCRIPTION

CTR Corner
Section 25
Township 44
Range 24



GENERALLY ACCEPTED CORNER BY LOCAL SURVEYORS.
CORNER AND WESTERLY REFERENCE FOUND AS SHOWN ON
CCR# 057320.

HORIZONTAL POSITION INFORMATION

Florida West Zone, NAD 1983(1990 Adjustment)
Northing(ft) 830702.06 Easting(ft) 700591.19
Latitude 26°37'08.39" N Longitude 080°51'50.49" W
Scale Factor 0.99994

EXISTING CERTIFIED CORNER RECORDS

Document No.	Date
<u>057320</u>	<u>8-9-96</u>

The above documents are based on FDEP Bureau of Surveying and Mapping Record Information.

I hereby certify the monument and accessories shown above were field located on 3-29-05

[Signature]
DARREN TOWNSEND
Professional Surveyor and Mapper
Florida Certificate No. 6476
Date Signed 8/22/05
COONER & ASSOC, INC
5670 ZIP DRIVE
Fort Myers, Florida 33905
Phone: (239) 277-0722

POINT NO. 9512

BLM REFERENCE NO. T44SR24E640240