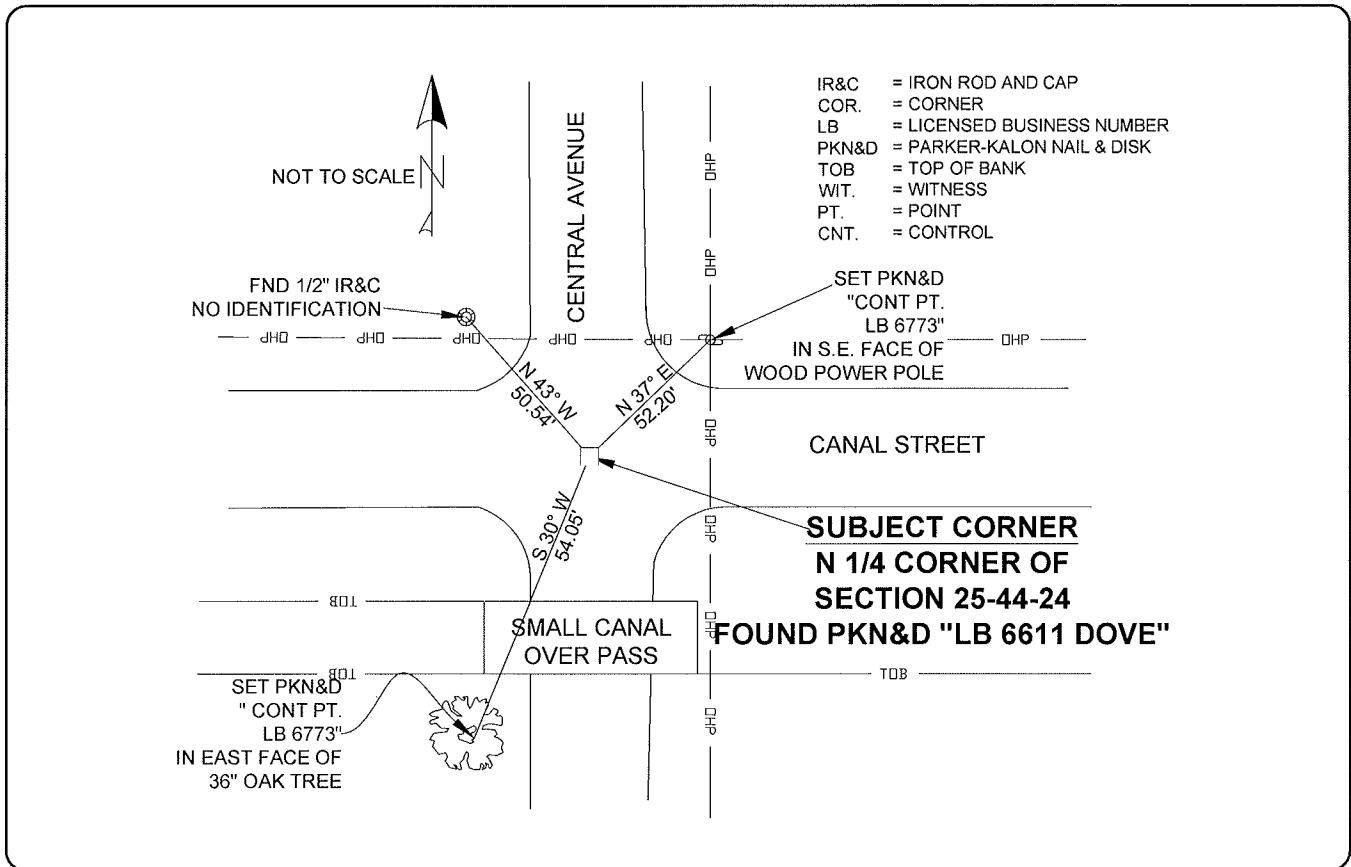


LAND CORNER RECORD

**PUBLIC WORKS
LEE COUNTY, FLORIDA**

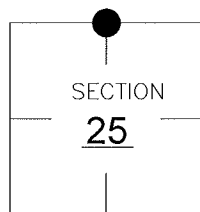
Address - 1500 Monroe St., Ft. Myers, Fla. 33901

Phone : (239) 479-8900



CORNER DESCRIPTION

N1/4 Corner
Section 25
Township 44
Range 24



GENERALLY ACCEPTED CORNER BY LOCAL SURVEYORS. CORNER FOUND CORRESPONDS TO COORDINATES OF R.R. SPIKE AS DESCRIBED IN CCR# 05318
R.R. SPIKE BELIEVED TO BE UNDER FOUND PKN&D UNDER NEW ASPHALT NORTH WESTERLY REFERENCE FOUND AS SHOWN ON CCR# 057318.

HORIZONTAL POSITION INFORMATION

Florida West Zone, NAD 1983(1990 Adjustment)
Northing(ft) 833344.38 Easting(ft) 700543.86
Latitude 26°37'34.56" N Longitude 080°51'50.98 W
Scale Factor 0.99994

EXISTING CERTIFIED CORNER RECORDS

Document No.	Date
<u>057318</u>	<u>8-9-96</u>

The above documents are based on FDEP Bureau of Surveying and Mapping Record Information.

I hereby certify the monument and accessories shown above were field located on 3-29-05.

[Signature]

DARREN TOWNSEND
Professional Surveyor and Mapper
Florida Certificate No. 6476
Date Signed 3/22/05

COONER & ASSOC, INC
5670 ZIP DRIVE
Fort Myers, Florida 33905
Phone: (239) 277-0722

POINT NO. 9514

BLM REFERENCE NO. T44SR24E640300