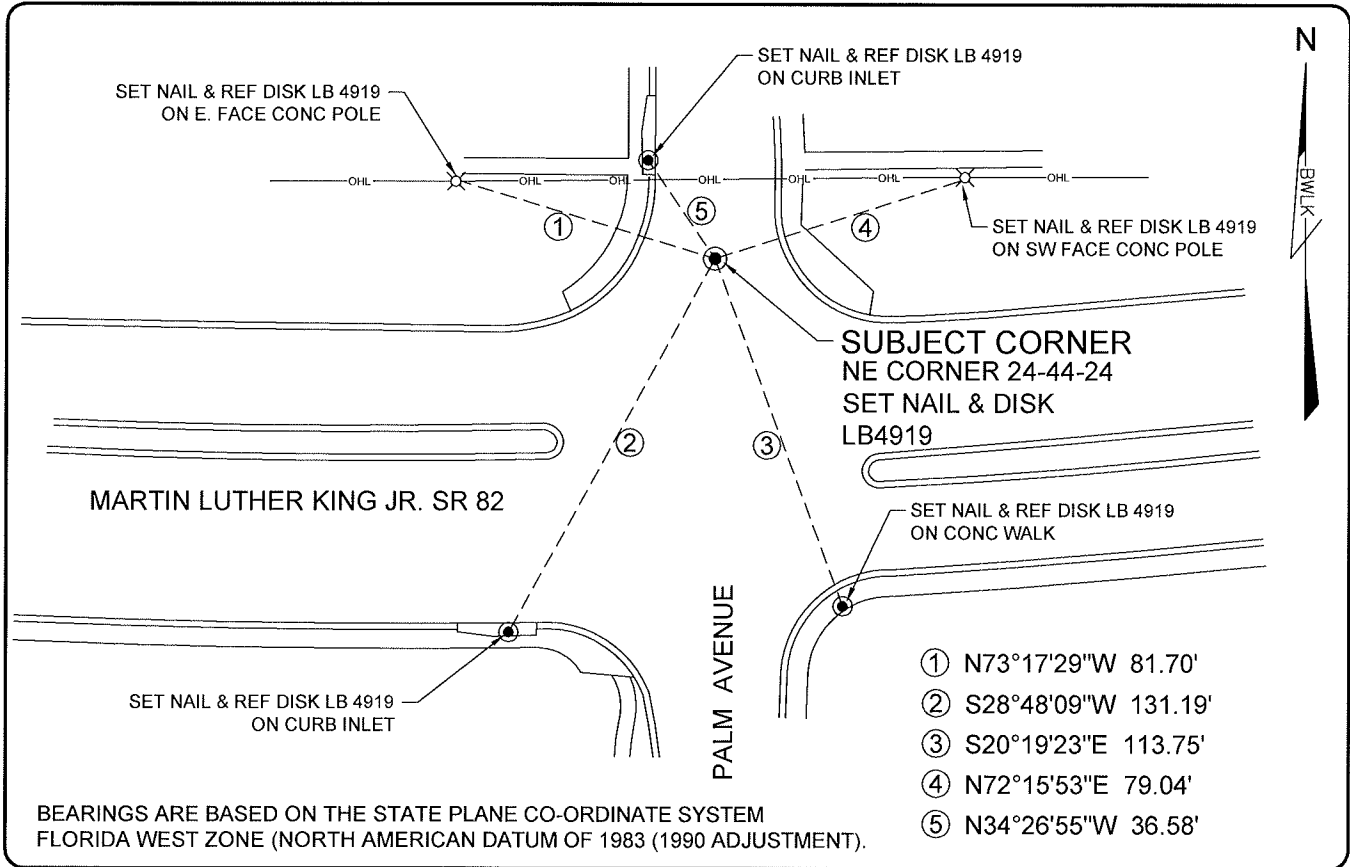


LAND CORNER RECORD

**PUBLIC WORKS
LEE COUNTY, FLORIDA**

Address - 1500 Monroe St., Ft. Myers, Fla. 33901

Phone : (239) 479-8900

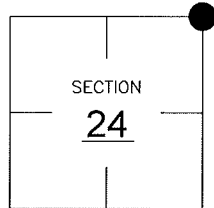


COMMENTS:

THE SUBJECT CORNER AND REFERENCES WERE NOT FOUND.
RESET CORNER BASED ON CO-ORDINATE VALUES CONTAINED
IN CCR57312.

CORNER DESCRIPTION

NE Corner
Section 24
Township 44
Range 24



HORIZONTAL POSITION INFORMATION

Florida West Zone, NAD 1983(1990 Adjustment)
Northing(ft) 838674.65 Easting(ft) 703111.25
Latitude 26°38'27.32573" Longitude 81°51'22.62143"
Scale Factor 0.99994

EXISTING CERTIFIED CORNER RECORDS

Document No.	Date
<u>057312</u>	<u>08-09-96</u>
<u>0032006</u>	<u>04-11-89</u>
_____	_____
_____	_____
_____	_____

The above documents are based on FDEP Bureau of Surveying and Mapping Record Information.

I hereby certify the monument and accessories shown above were field located on 08-10-2005.

Scott C. Whitaker

SCOTT C. WHITAKER
Professional Surveyor and Mapper
Florida Certificate No. 4324
Date Signed 08-10-2005

BEAN, WHITAKER, LUTZ & KAREH, INC. (LB 4919)
13041 McGregor Boulevard
Fort Myers, Florida 33919-5910
Phone: (239) 481-1331

POINT NO. 10093

BLM REFERENCE NO. T44SR24E700400