

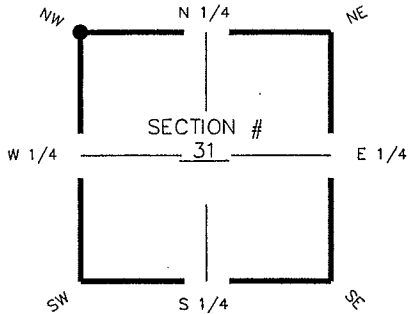
FLORIDA DEPARTMENT OF ENVIRONMENTAL PROTECTION CERTIFIED CORNER RECORD

V-1

DOC. # _____

CORNER DESCRIPTION: MONUMENTATION DESCRIPTION (EVIDENCE FOUND OR METHOD TO SET)

Depict corner with

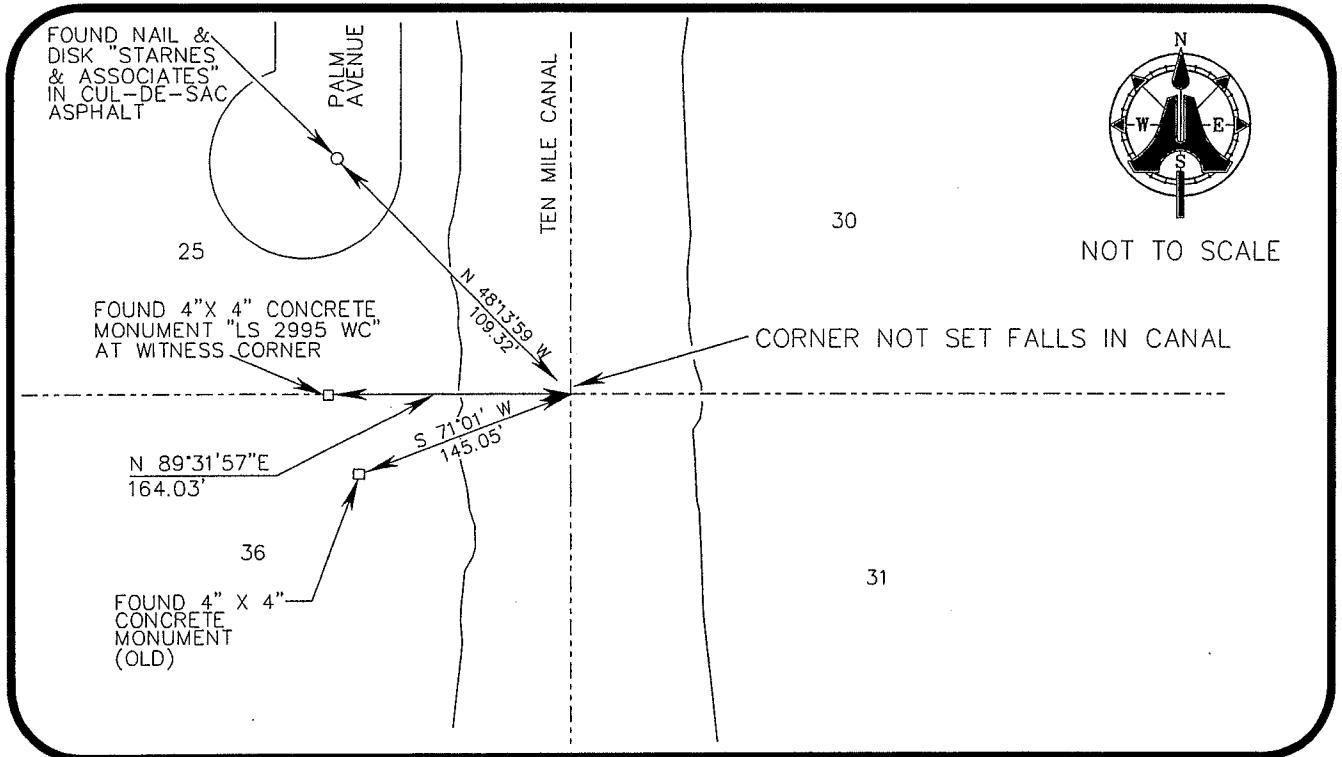


CORNER NOT SET FALLS IN CANAL
FOUND 4" X 4" CONCRETE MONUMENT
"LS 2995 WC" AT WITNESS CORNER

HORIZONTAL POSITION INFORMATION (if determined):

Latitude 26° 36' 42.6187" N Longitude 81° 51' 20.9024" W
 Y(NORTHING-Ft.) 828102.67 X(EASTING-Ft.) 703279.15 Zone FL W
 Convergence 00° 03' 52.5270" Scale factor 0.999943721
 Coordinate determination (circle one): Field traverse GPS
 Horizontal datum (circle one): NAD27 NAD83(1986) NAD83(1990) other (explain)
 Accuracy (circle one): 1st 2nd 3rd other _____

NW corner of Section 31
 Twp 44S, Rge 25 E
 Tallahassee Base Meridian,
LEE County(s), Florida



SURVEYORS CERTIFICATE:

I certify the monument and accessories indicated above were field located on MAY 23 ,2006

[Signature] 5688
SIGNATURE PSM NO.
AIM ENGINEERING & SURVEYING, INC. LB 3114
FIRM OR AGENCY LB NO.
5300 LEE BOULEVARD
ADDRESS
LEHIGH ACRES, FLORIDA 33971-1026
CITY STATE ZIP
(239) 332-4569 8/11/06
PHONE NUMBER DATE

SEND ORIGINAL TO:
 Department of Environmental Protection
 Bureau of Surveying and Mapping
 3900 Commonwealth Boulevard
 Mail Station 105
 Tallahassee, Florida 32399

D.E.P. USE ONLY	
Processed: _____	
B.L.M. - I.D. <u>100200</u>	
QUAD - I.D. _____	

EMBOSSED SEAL OVER SIGNATURE