

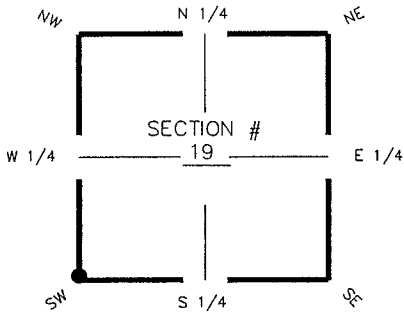
FLORIDA DEPARTMENT OF ENVIRONMENTAL PROTECTION CERTIFIED CORNER RECORD

R-1

DOC. # _____

CORNER DESCRIPTION: MONUMENTATION DESCRIPTION (EVIDENCE FOUND OR METHOD TO SET)

Depict corner with

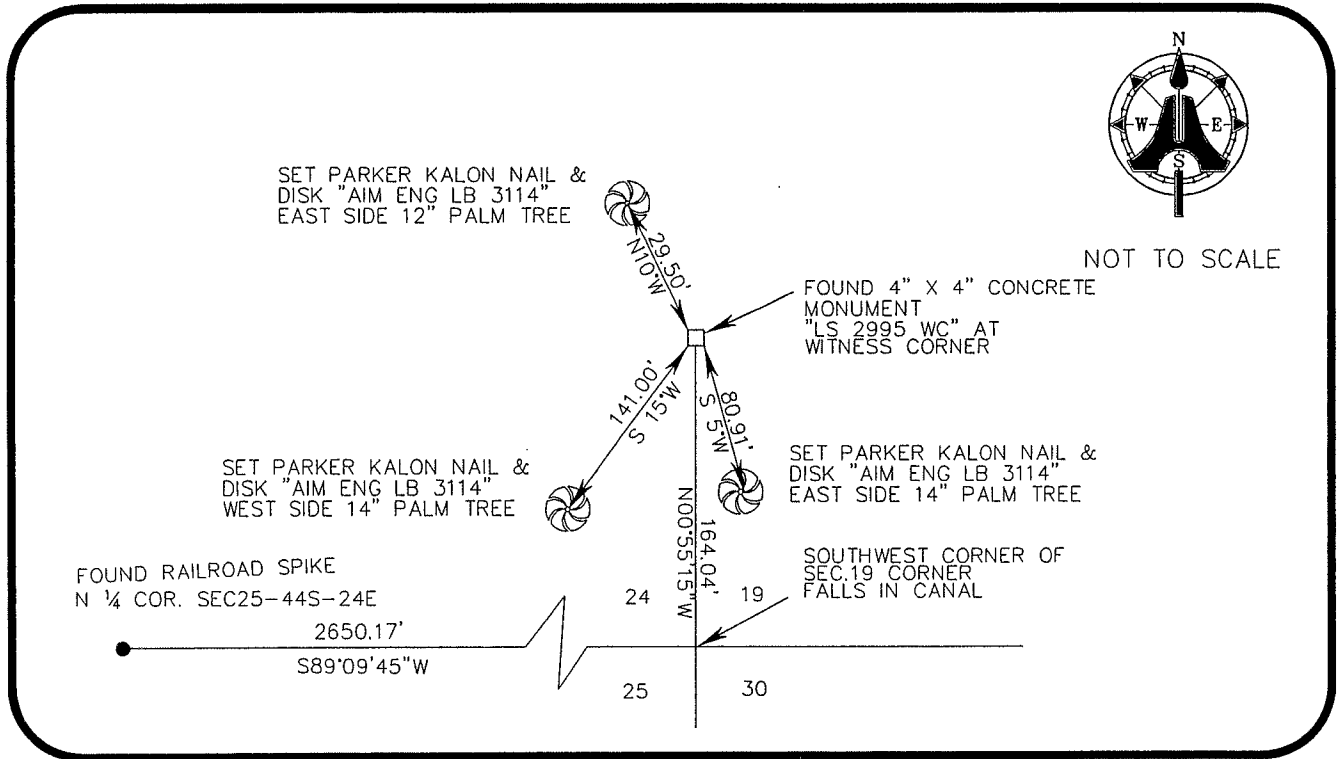


SW corner of Section 19
Twp 44S, Rge 25 E
Tallahassee Base Meridian,
LEE County(s), Florida

CORNER NOT SET FALLS IN CANAL
FOUND 4" X 4" CONCRETE MONUMENT
"LS 2995 WC" AT WITNESS CORNER

HORIZONTAL POSITION INFORMATION (if determined):

Latitude 26° 37' 34.9186" N Longitude 81° 51' 21.7802" W
Y(NORTHING-Ft.) 833383.24 X(EASTING-Ft.) 703193.54 Zone FL W
Convergence 00° 03' 52.2512" Scale factor 0.999943712
Coordinate determination (circle one): Field traverse (GPS)
Horizontal datum (circle one): NAD27 NAD83(1986) (NAD83(1990)) other (explain)
Accuracy (circle one): 1st (2nd) 3rd other _____



SURVEYORS CERTIFICATE:

I certify the monument and accessories indicated above were field located on MAY 26, 2006

SIGNATURE _____ 5688 PSM NO.
AIM ENGINEERING & SURVEYING, INC. LB 3114 LB NO.
FIRM OR AGENCY
5300 LEE BOULEVARD ADDRESS
LEHIGH ACRES, FLORIDA 33971-1026
CITY STATE ZIP
(239) 332-4569 8/1/06
PHONE NUMBER DATE

SEND ORIGINAL TO:
Department of Environmental Protection
Bureau of Surveying and Mapping
3900 Commonwealth Boulevard
Mail Station 105
Tallahassee, Florida 32399

D.E.P. USE ONLY
Processed: _____
B.L.M. - I.D. <u>100 300</u>
QUAD - I.D. _____

EMBOSSSED SEAL OVER SIGNATURE