

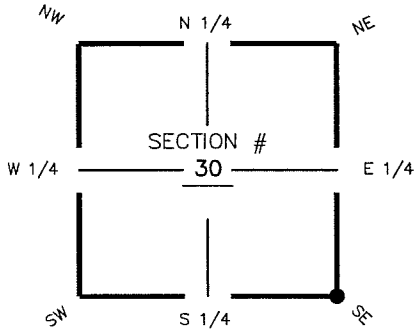
FLORIDA DEPARTMENT OF ENVIRONMENTAL PROTECTION CERTIFIED CORNER RECORD

DOC. # _____

V-5

CORNER DESCRIPTION: MONUMENTATION DESCRIPTION (EVIDENCE FOUND OR METHOD TO SET)

Depict corner with

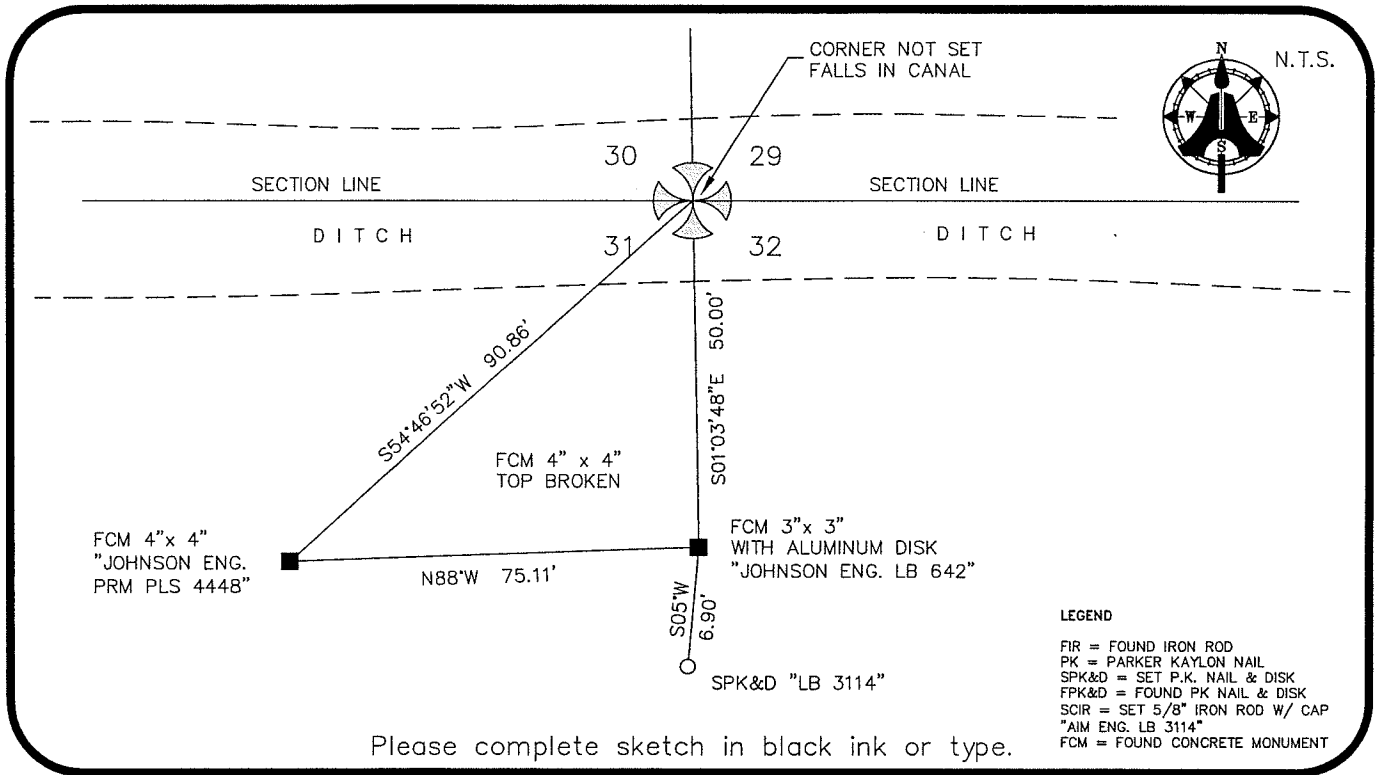


CORNER NOT SET FALLS IN CANAL
FOUND 4"x 4" CONCRETE MONUMENT
WITH ALUMINUM DISK
"JOHNSON ENG. LB 642"
AT WITNESS CORNER

HORIZONTAL POSITION INFORMATION (if determined):

Latitude 26° 36' 43.9842" N Longitude 81° 50' 22.8584 W
 Y(NORTHING-Ft.) 828246.82 X(EASTING-Ft.) 708546.97 Zone FL W
 Convergence 00° 04' 18.5" Scale factor 0.99994432
 Coordinate determination (circle one): Field traverse GPS
 Horizontal datum (circle one): NAD27 NAD83(1986) NAD83(1990) other (explain)
 Accuracy (circle one): 1st 2nd 3rd other _____

SE corner of Section 30
 Twp 44 S, Rge 25 E
 Tallahassee Base Meridian,
LEE County(s), Florida



SURVEYORS CERTIFICATE:

I certify the monument and accessories indicated above were field located on AUGUST 21, 2006

[Signature] 5688
 SIGNATURE PSM NO.
AIM ENGINEERING & SURVEYING, INC. LB 3114
 FIRM OR AGENCY LB NO.
5300 LEE BOULEVARD
 ADDRESS
LEHIGH ACRES, FLORIDA 33971-1026
 CITY STATE ZIP
(239) 332-4569 9/11/06
 PHONE NUMBER DATE

SEND ORIGINAL TO:
 Department of Environmental Protection
 Bureau of Surveying and Mapping
 3900 Commonwealth Boulevard
 Mail Station 105
 Tallahassee, Florida 32399

D.E.P. USE ONLY
Processed: _____
B.L.M. - I.D. <u>200 200</u>
QUAD - I.D. _____

EMBOSSSED SEAL OVER SIGNATURE