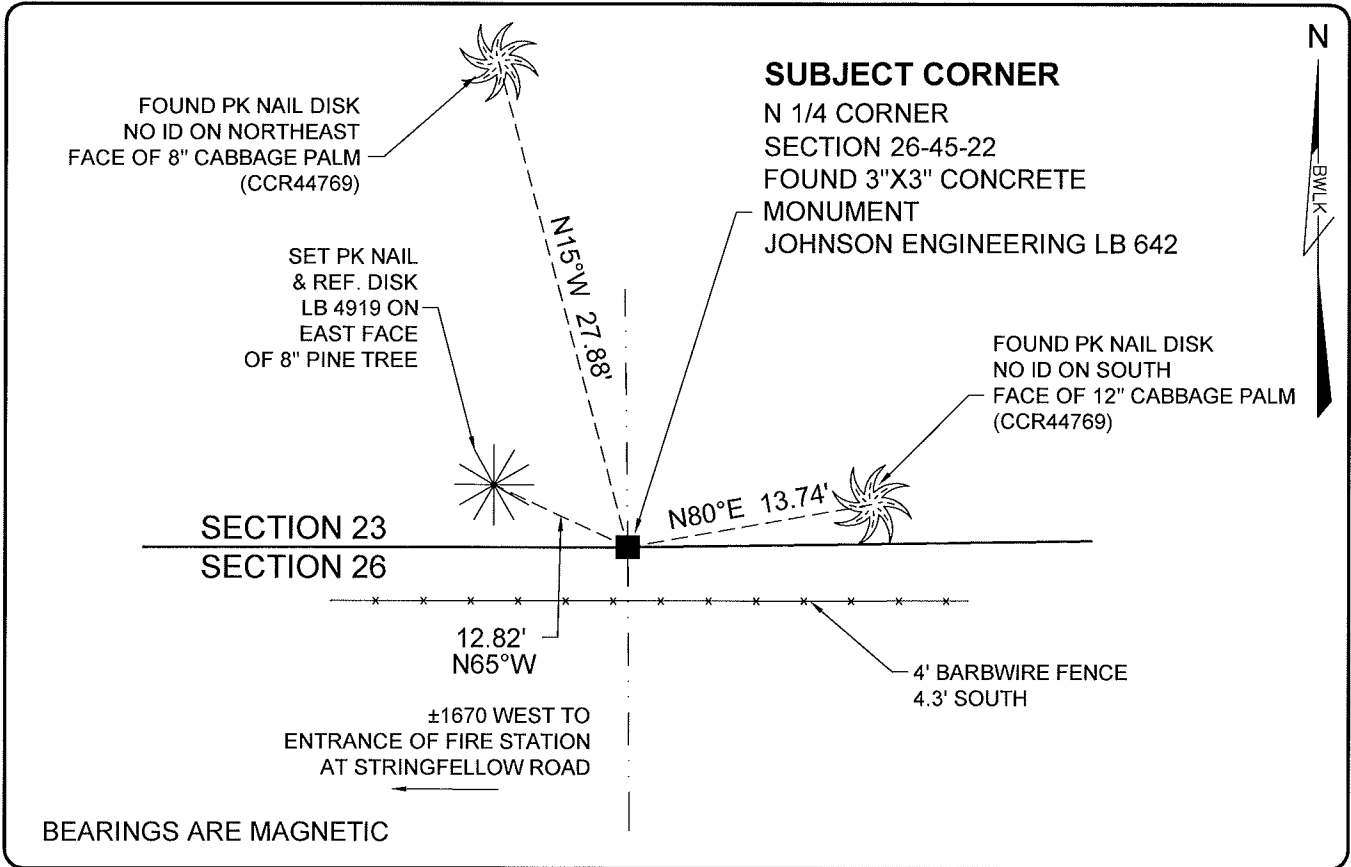


**LAND CORNER RECORD**

**PUBLIC WORKS  
LEE COUNTY, FLORIDA**

Address - 1500 Monroe St., Ft. Myers, Fla. 33901

Phone : (239) 479-8900



BEARINGS ARE MAGNETIC

**COMMENTS:**

FOUND 3"x3" CONCRETE MONUMENT WITH BRASS DISK STAMPED "JOHNSON ENGINEERING LB642", RECOVERED (2) OUT OF (3) REFERENCES IN HARMONY WITH CCR#44769. THERE APPEARS TO BE AN ERROR IN THE PUBLISHED COORDINATE VALUES SHOWN IN CCR #44769 (ACTUAL CORNER FALLS 1.17' SOUTH AND 5.53' EAST FROM THE PUBLISHED VALUES). THE CORNER WAS LOCATED USING GPS CONTROL POINT 9057 (SAME AS THE CCR).

**HORIZONTAL POSITION INFORMATION**

Florida West Zone, NAD 1983(1990 Adjustment)

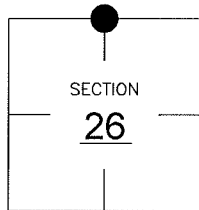
Northing(ft) 799378.63 Easting(ft) 629079.67

Latitude 26°31'58.30826" N Longitude 82°04'58.24708" W

Scale Factor 0.99994

**CORNER DESCRIPTION**

N 1/4 Corner  
Section 26  
Township 45  
Range 22



**EXISTING CERTIFIED CORNER RECORDS**

| Document No. | Date            |
|--------------|-----------------|
| <u>44769</u> | <u>01-15-93</u> |
|              |                 |
|              |                 |
|              |                 |
|              |                 |

The above documents are based on FDEP Bureau of Surveying and Mapping Record Information.

I hereby certify the monument and accessories shown above were field located on 08-20-05.

*Scott C. Whitaker*  
**SCOTT C. WHITAKER**  
Professional Surveyor and Mapper  
Florida Certificate No. 4324  
Date Signed 08-30-05

BEAN, WHITAKER, LUTZ & KAREH, INC. (LB 4919)  
13041 McGregor Boulevard  
Fort Myers, Florida 33919-5910  
Phone: (239) 481-1331

POINT NO. 11652

BLM REFERENCE NO. T45SR22E540300