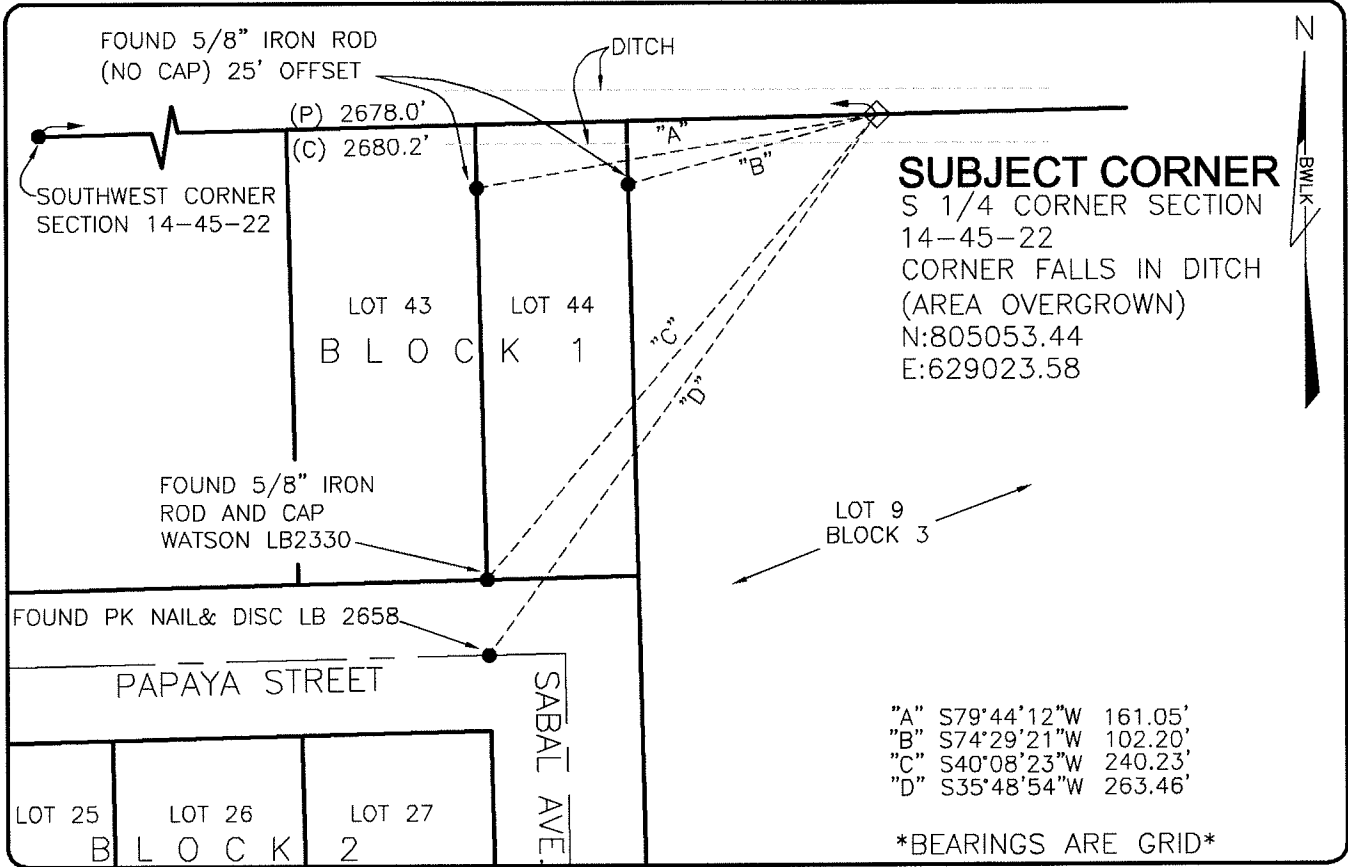


**LAND CORNER RECORD**

**PUBLIC WORKS  
LEE COUNTY, FLORIDA**

Address - 1500 Monroe St., Ft. Myers, Fla. 33901

Phone : (239) 479-8900

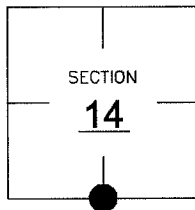


**COMMENTS:**

UNABLE TO SET CORNER.  
LOCATION OF CORNER RECONSTRUCTED FROM THE PLAT OF  
PINE ISLAND TROPICAL HOMESITES (PB 9 PG. 79) AND  
EXISTING LOT MONUMENTATION.

**CORNER DESCRIPTION**

S 1/4 Corner  
Section 14  
Township 45  
Range 22



**HORIZONTAL POSITION INFORMATION**

Florida West Zone, NAD 1983(1990 Adjustment)  
Northing(ft) 805053.44 Easting(ft) 629023.58  
Latitude 26°32'54.5092" Longitude 82°04'58.9051"  
Scale Factor 0.99994

**EXISTING CERTIFIED CORNER RECORDS**

Document No.	Date
<b>NONE</b>	<b>NONE</b>

The above documents are based on FDEP Bureau of Surveying and Mapping Record Information.

I hereby certify the monument and accessories shown above were field located on 6-30-07.

*Scott C. Whitaker*  
**SCOTT C. WHITAKER**  
Professional Surveyor and Mapper  
Florida Certificate No. 4324  
Date Signed 9-14-07

BEAN, WHITAKER, LUTZ & KAREH, INC. (LB 4919)  
13041 McGregor Boulevard  
Fort Myers, Florida 33919-5910  
Phone: (239) 481-1331

POINT NO. 11733

BLM REFERENCE NO. T45SR22E540400