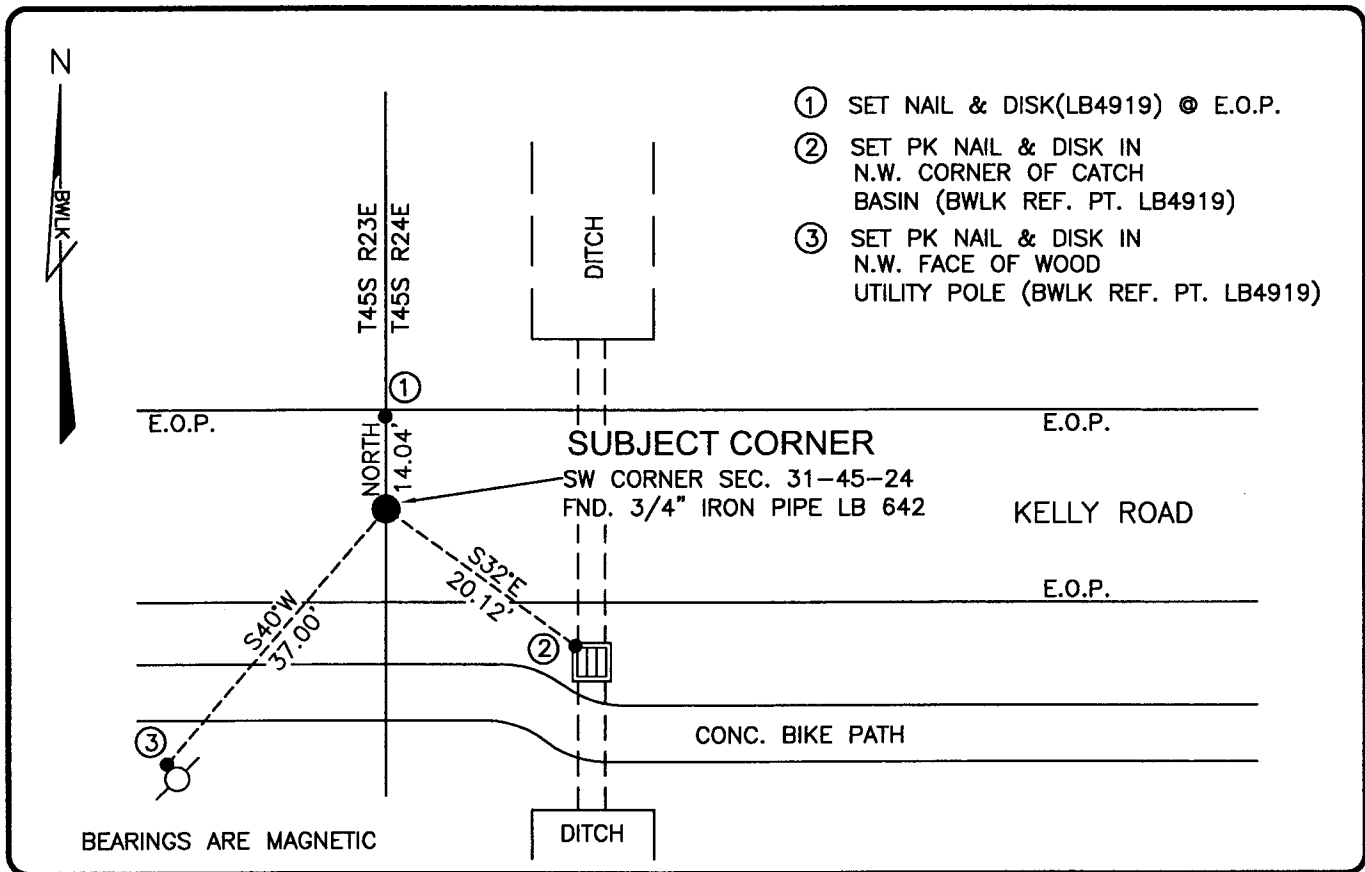


PUBLIC WORKS  
LEE COUNTY, FLORIDA

Address - 1500 Monroe St., Ft. Myers, Fla. 33901

Phone : (239) 479-8900



- ① SET NAIL & DISK(LB4919) @ E.O.P.
- ② SET PK NAIL & DISK IN N.W. CORNER OF CATCH BASIN (BWLK REF. PT. LB4919)
- ③ SET PK NAIL & DISK IN N.W. FACE OF WOOD UTILITY POLE (BWLK REF. PT. LB4919)

BEARINGS ARE MAGNETIC

COMMENTS:

CORNER DESCRIPTION

SW Corner	
Section	31
Township	45
Range	24

HORIZONTAL POSITION INFORMATION

Florida West Zone, NAD 1983(1990 Adjustment)  
 Northing(ft) 790619.65 Easting(ft) 671941.81  
 Latitude 26d30'31.61482" Longitude 81d57'06.34065"  
 Scale Factor 0.9994

EXISTING CERTIFIED CORNER RECORDS

Document No.	Date
31633	1-25-89

The above documents are based on FDEP Bureau of Surveying and Mapping Record Information.

I hereby certify the monument and accessories shown above were field located on 10-10-03.

*Scott C. Whitaker*  
 SCOTT C. WHITAKER  
 Professional Surveyor and Mapper  
 Florida Certificate No. 4324  
 Date Signed 1-28-04

BEAN, WHITAKER, LUTZ & KAREH, INC. (LB 4919)  
 13041 McGregor Boulevard  
 Fort Myers, Florida 33919-5910  
 Phone: (239) 481-1331

POINT NO. 891

BLM REFERENCE NO. T45SR24E100100

F  
E  
C