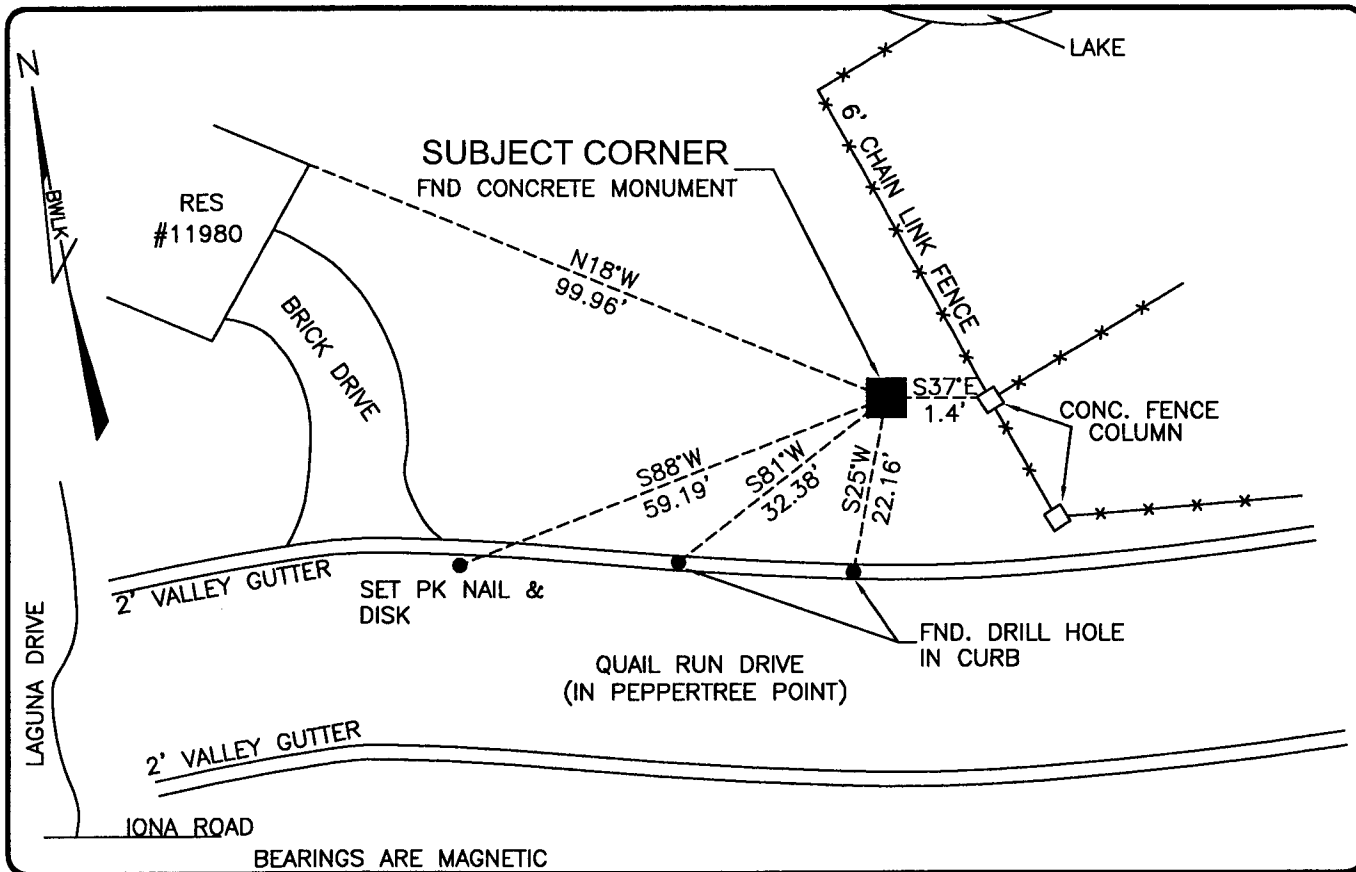


PUBLIC WORKS
LEE COUNTY, FLORIDA

Address - 1500 Monroe St., Ft. Myers, Fla. 33901

Phone : (239) 479-8900

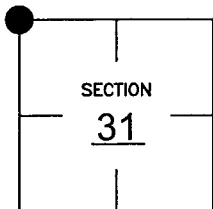


BEARINGS ARE MAGNETIC

COMMENTS:
GENERALLY ACCEPTED CORNER BY LOCAL SURVEYORS.

CORNER DESCRIPTION

NW Corner
Section 31
Township 45
Range 24



HORIZONTAL POSITION INFORMATION

Florida West Zone, NAD 1983(1990 Adjustment)
Northing(ft) 795921.38 Easting(ft) 671844.62
Latitude 26d31'24.12463" Longitude 81d57'07.38875"
Scale Factor 0.99994

EXISTING CERTIFIED CORNER RECORDS

Document No.	Date
<u>18194</u>	<u>1-09-84</u>
<u>18381</u>	<u>2-24-84</u>
<u>31627</u>	<u>1-25-89</u>
<u>36315</u>	<u>6-06-90</u>
<u>45756</u>	<u>5-28-93</u>

The above documents are based on FDEP Bureau of Surveying and Mapping Record Information.

I hereby certify the monument and accessories shown above were field located on 10-09-03.

Scott C. Whitaker
SCOTT C. WHITAKER
Professional Surveyor and Mapper
Florida Certificate No. 4324
Date Signed 1-16-04

BEAN, WHITAKER, LUTZ & KAREH, INC. (LB 4919)
13041 McGregor Boulevard
Fort Myers, Florida 33919-5910
Phone: (239) 481-1331

POINT NO. 5044

BLM REFERENCE NO. T45SR24E100200