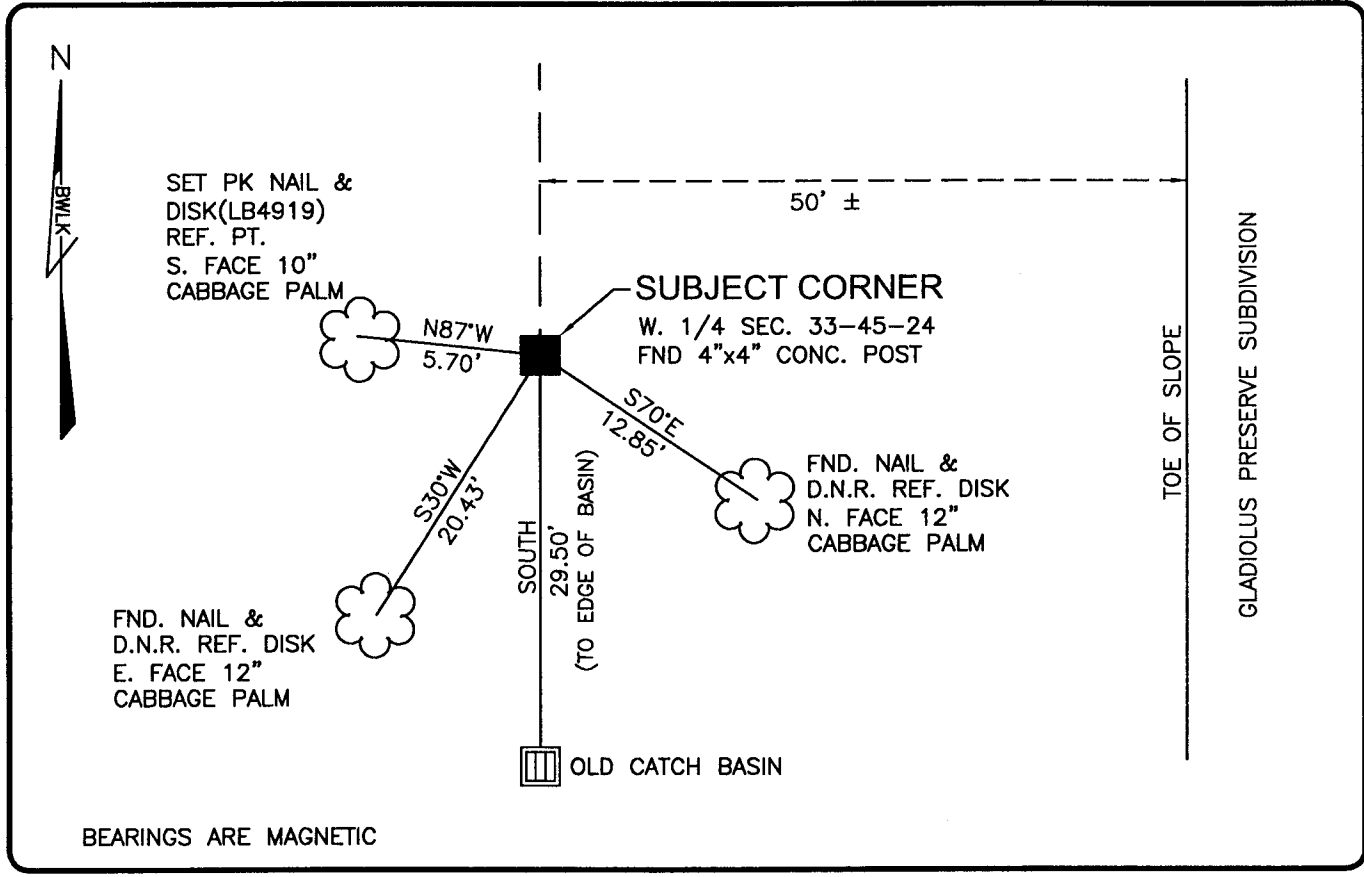


PUBLIC WORKS
LEE COUNTY, FLORIDA

Address - 1500 Monroe St., Ft. Myers, Fla. 33901

Phone : (239) 479-8900

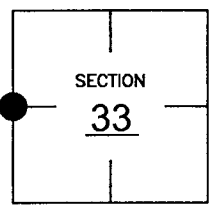


BEARINGS ARE MAGNETIC

COMMENTS:
 GENERALLY ACCEPTED CORNER BY LOCAL SURVEYORS.
 RECHECKED FIELD GPS OBSERVATIONS MULTIPLE TIMES DUE
 TO VARYING COORDINATE VALUES BY LOCAL SURVEYORS.
 TIES TO CORNER MATCHES EXISTING CERTIFIED CORNER
 RECORDS (CCR).

CORNER DESCRIPTION

W 1/4 Corner
 Section 33
 Township 45
 Range 24



HORIZONTAL POSITION INFORMATION

Florida West Zone, NAD 1983(1990 Adjustment)
 Northing(ft) 793452.12 Easting(ft) 682496.75
 Latitude 26d30'59.61577" Longitude 81d55'10.12798"
 Scale Factor 0.9994

EXISTING CERTIFIED CORNER RECORDS

Document No.	Date
<u>14756</u>	<u>4-17-82</u>
<u>21807</u>	<u>7-09-85</u>

The above documents are based on FDEP Bureau of Surveying and Mapping Record Information.

I hereby certify the monument and accessories shown above were field located on 1-14-04.

Scott C. Whitaker
 SCOTT C. WHITAKER
 Professional Surveyor and Mapper
 Florida Certificate No. 4324
 Date Signed 1-28-04

BEAN, WHITAKER, LUTZ & KAREH, INC. (LB 4919)
 13041 McGregor Boulevard
 Fort Myers, Florida 33919-5910
 Phone: (239) 481-1331

POINT NO. 6038

BLM REFERENCE NO. T45SR24E300140