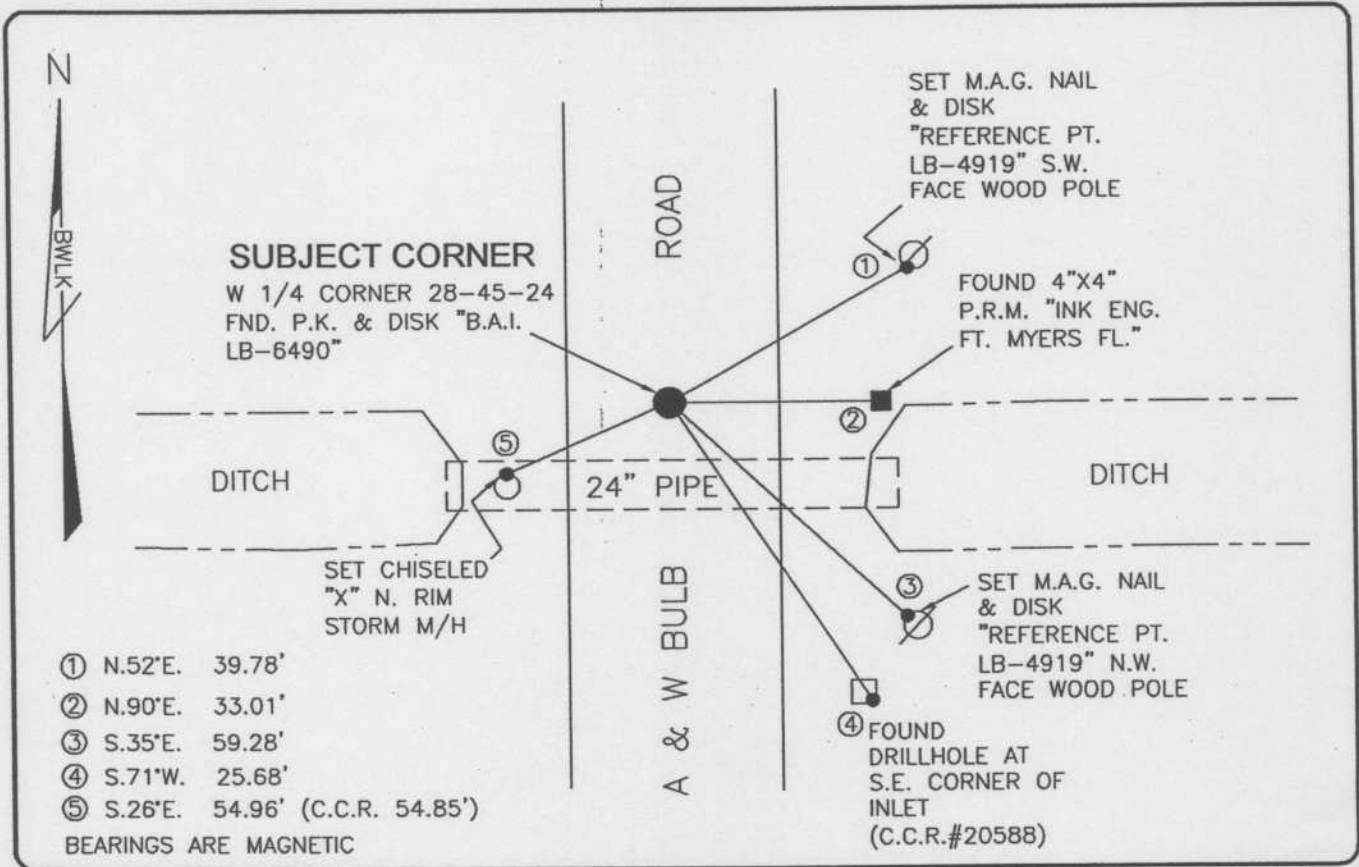


**LAND CORNER RECORD**

**PUBLIC WORKS  
LEE COUNTY, FLORIDA**

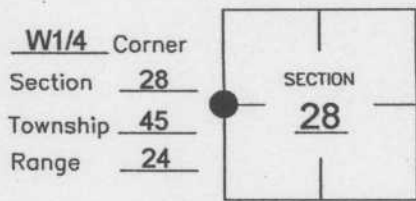
Address - 1500 Monroe St., Ft. Myers, Fla. 33901

Phone : (239) 479-8900



**COMMENTS:**  
CORNER HAS BEEN RESET. VERIFIED LOCATION BASED ON HISTORICAL RECORDS AND REFERENCE POINT FROM CCR 20588.

**CORNER DESCRIPTION**



**HORIZONTAL POSITION INFORMATION**

Florida West Zone, NAD 1983(1990 Adjustment)

Northing(ft) 798695.89 Easting(ft) 682396.49

Latitude 26°31'51.55169" Longitude 81°55'11.19562"

Scale Factor 0.99994

**EXISTING CERTIFIED CORNER RECORDS**

| Document No. | Date           |
|--------------|----------------|
| <u>20588</u> | <u>1-24-85</u> |
| <u>23138</u> | <u>5-06-86</u> |
|              |                |
|              |                |
|              |                |

The above documents are based on FDEP Bureau of Surveying and Mapping Record Information.

I hereby certify the monument and accessories shown above were field located on 2-19-04.

*Scott C. Whitaker*

SCOTT C. WHITAKER  
Professional Surveyor and Mapper  
Florida Certificate No. 4324  
Date Signed 4-07-04

BEAN, WHITAKER, LUTZ & KAREH, INC. (LB 4919)  
13041 McGregor Boulevard  
Fort Myers, Florida 33919-5910  
Phone: (239) 481-1331