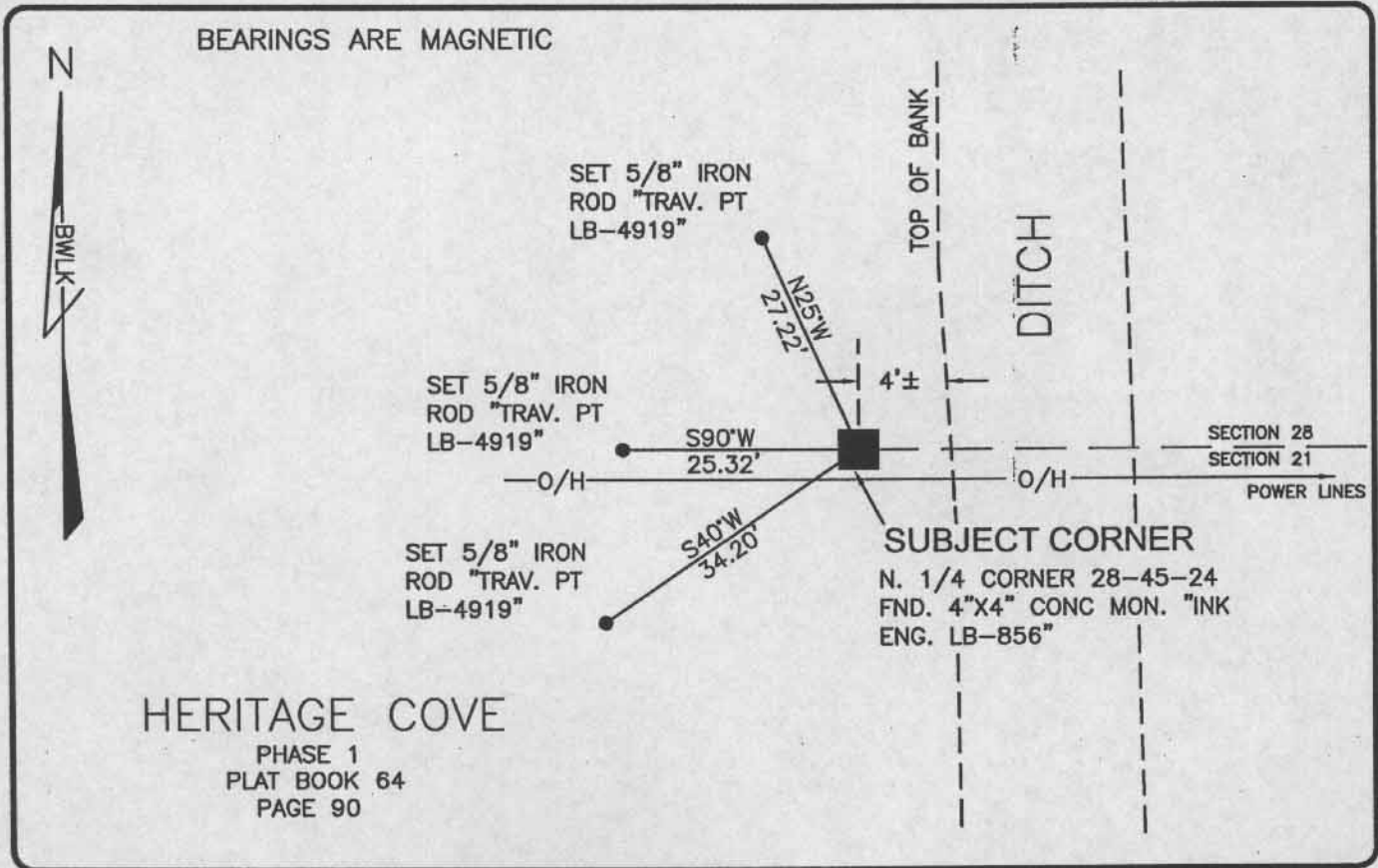


LAND CORNER RECORD

PUBLIC WORKS
LEE COUNTY, FLORIDA

Address - 1500 Monroe St., Ft. Myers, Fla. 33901

Phone : (239) 479-8900

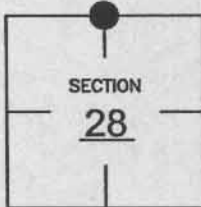


COMMENTS:

C.C.R. 31640 CALLS FOR A 1-1/2" IRON PIPE. FOUND 4"X4" CONC. MONUMENT (LB-856) SET DURING PLATTING OF HERITAGE COVE. DIMENSIONS OF SECTION VERIFIED WITH HISTORICAL RECORDS.

CORNER DESCRIPTION

N1/4 Corner
Section 28
Township 45
Range 24



HORIZONTAL POSITION INFORMATION

Florida West Zone, NAD 1983(1990 Adjustment)

Northing(ft) 801401.29 Easting(ft) 684994.97

Latitude 26°32'18.32959" Longitude 81°54'42.56457"

Scale Factor 0.99994

EXISTING CERTIFIED CORNER RECORDS

Document No.	Date
<u>31640</u>	<u>1-25-89</u>

The above documents are based on FDEP Bureau of Surveying and Mapping Record Information.

I hereby certify the monument and accessories shown above were field located on 10-21-03.

Scott C. Whitaker

SCOTT C. WHITAKER
Professional Surveyor and Mapper
Florida Certificate No. 4324
Date Signed 4-07-04

BEAN, WHITAKER, LUTZ & KAREH, INC. (LB 4919)
13041 McGregor Boulevard
Fort Myers, Florida 33919-5910
Phone: (239) 481-1331

POINT NO. 5115

BLM REFERENCE NO. T45SR24E340300