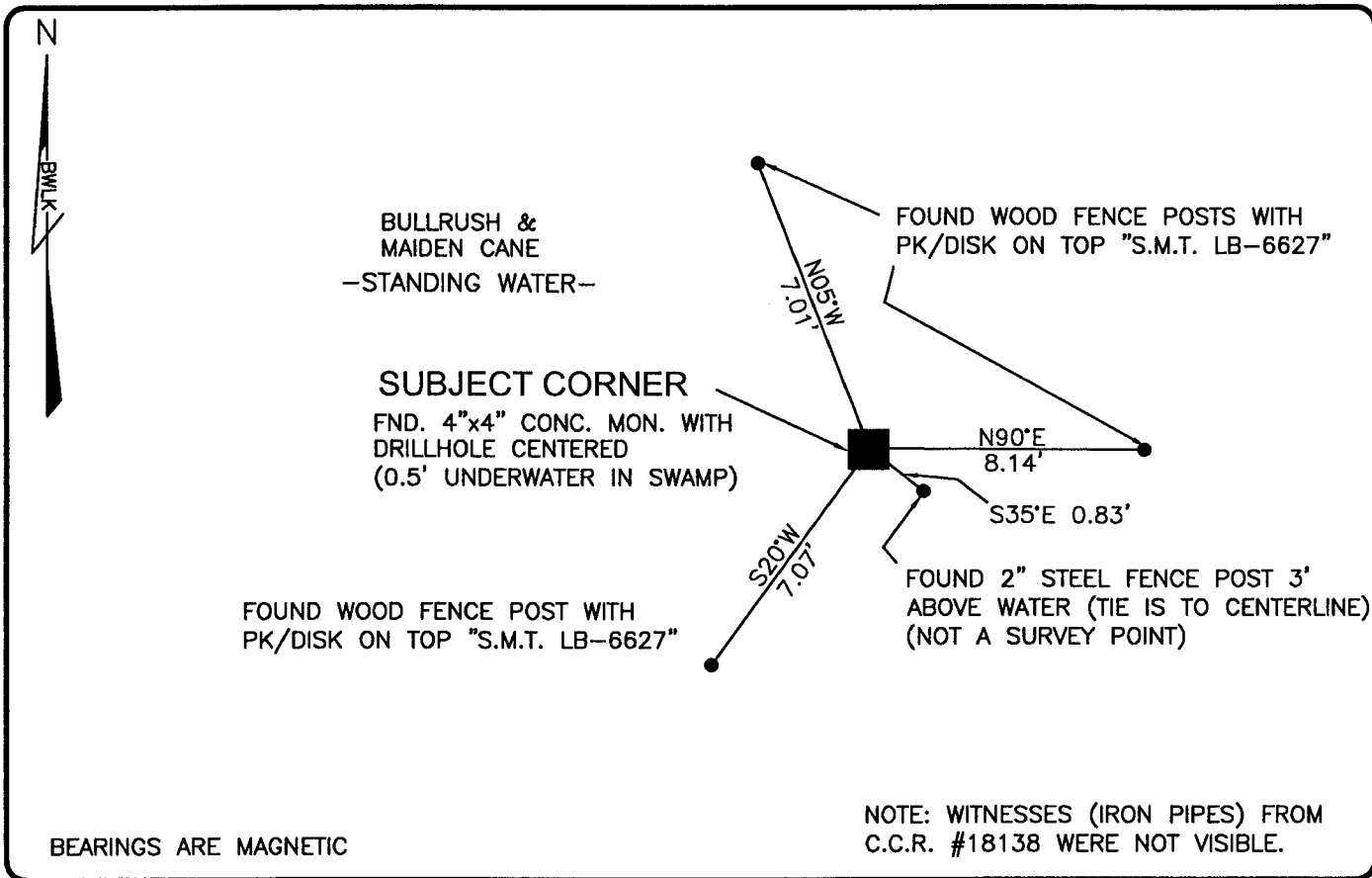


PUBLIC WORKS
LEE COUNTY, FLORIDA

Address - 1500 Monroe St., Ft. Myers, Fla. 33901

Phone : (239) 479-8900

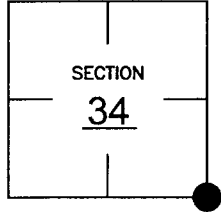


COMMENTS:

OBSERVED GPS VALUES DIFFER SLIGHTLY FROM
CCR VALUES (65535). CORNER IN HARMONY WITH
HISTORICAL DIMENSIONS OF THIS SECTION.

CORNER DESCRIPTION

SE Corner
Section 34
Township 45
Range 24



HORIZONTAL POSITION INFORMATION

Florida West Zone, NAD 1983(1990 Adjustment)
Northing(ft) 791006.82 Easting(ft) 693140.70
Latitude 26°30'35.31747" Longitude 81°53'12.97096"
Scale Factor 0.99994

EXISTING CERTIFIED CORNER RECORDS

Document No.	Date
<u>18138</u>	<u>12-29-83</u>
<u>65535</u>	<u>9-28-99</u>
_____	_____
_____	_____

The above documents are based on FDEP Bureau
of Surveying and Mapping Record Information.

I hereby certify the monument and accessories
shown above were field located on 2-16-04.

Scott C. Whitaker
SCOTT C. WHITAKER
Professional Surveyor and Mapper
Florida Certificate No. 4324
Date Signed 3-03-04

BEAN, WHITAKER, LUTZ & KAREH, INC. (LB 4919)
13041 McGregor Boulevard
Fort Myers, Florida 33919-5910
Phone: (239) 481-1331