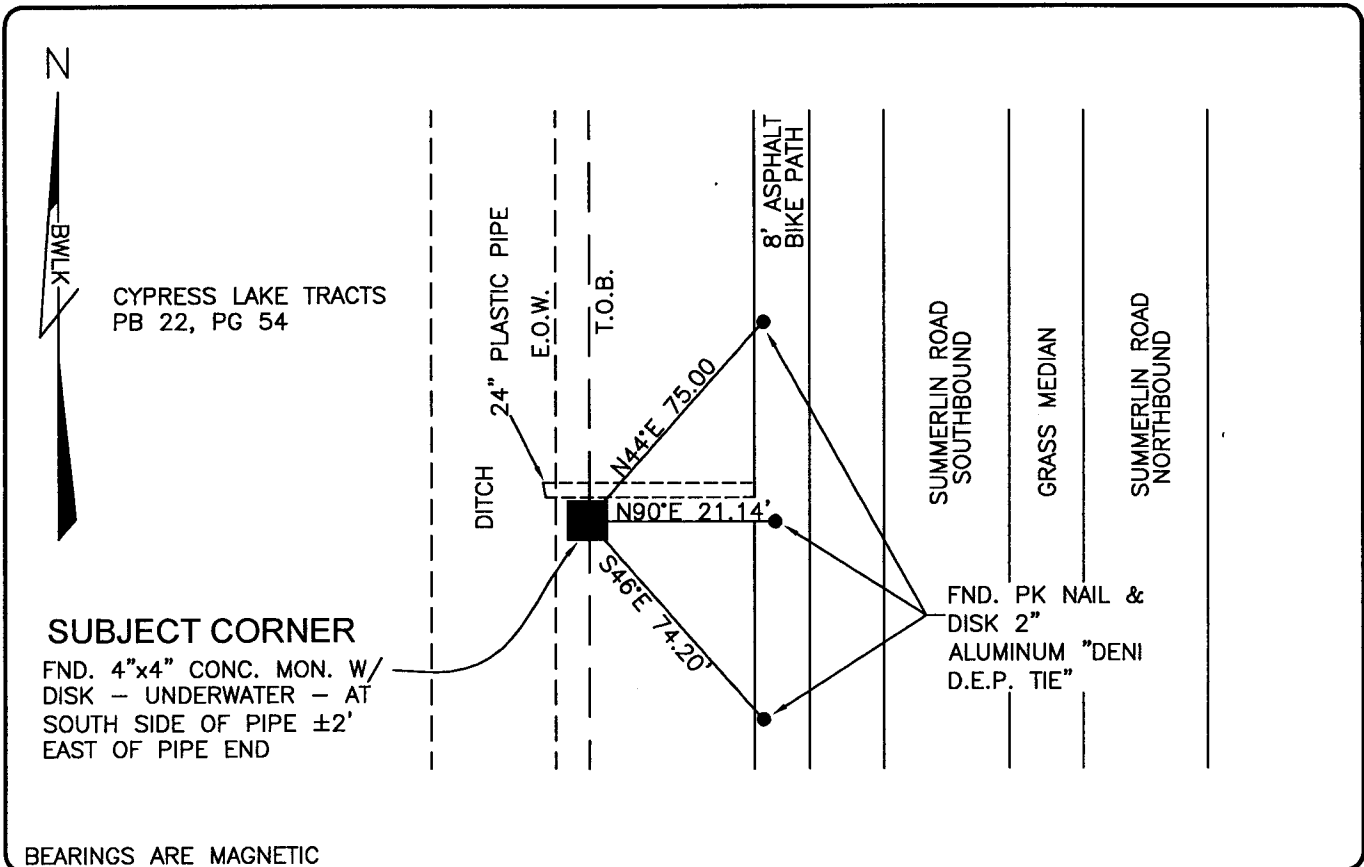


PUBLIC WORKS

LEE COUNTY, FLORIDA

Address - 1500 Monroe St., Ft. Myers, Fla. 33901

Phone : (239) 479-8900

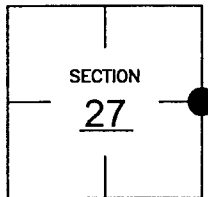


COMMENTS:

CONCRETE POST FOUND BY JOHNSON ENGINEERING PER SURVEY OF LAKES PARK DATED 1982. A 4"x4" CM WAS FOUND IN DITCH IN 1990 AND RECOVERED 10-21-03. VALUES ON CCR 75309 DIFFER DUE TO SURVEYOR'S DECISION TO HOLD WITNESS CORNER. (PER PLAT)

CORNER DESCRIPTION

E 1/4 Corner
Section 27
Township 45
Range 24



HORIZONTAL POSITION INFORMATION

Florida West Zone, NAD 1983(1990 Adjustment)
Northing(ft) 798884.57 Easting(ft) 693002.39
Latitude 26°31'53.34145" Longitude 81°53'14.41736"
Scale Factor 0.99994

EXISTING CERTIFIED CORNER RECORDS

Document No.	Date
36820	9-17-90
75309	5-08-02

The above documents are based on FDEP Bureau of Surveying and Mapping Record Information.

I hereby certify the monument and accessories shown above were field located on 10-21-03.

Scott C. Whitaker

SCOTT C. WHITAKER
Professional Surveyor and Mapper
Florida Certificate No. 4324
Date Signed 2-23-04

BEAN, WHITAKER, LUTZ & KAREH, INC. (LB 4919)
13041 McGregor Boulevard
Fort Myers, Florida 33919-5910
Phone: (239) 481-1331

POINT NO. 6012

BLM REFERENCE NO. T45SR24E500240