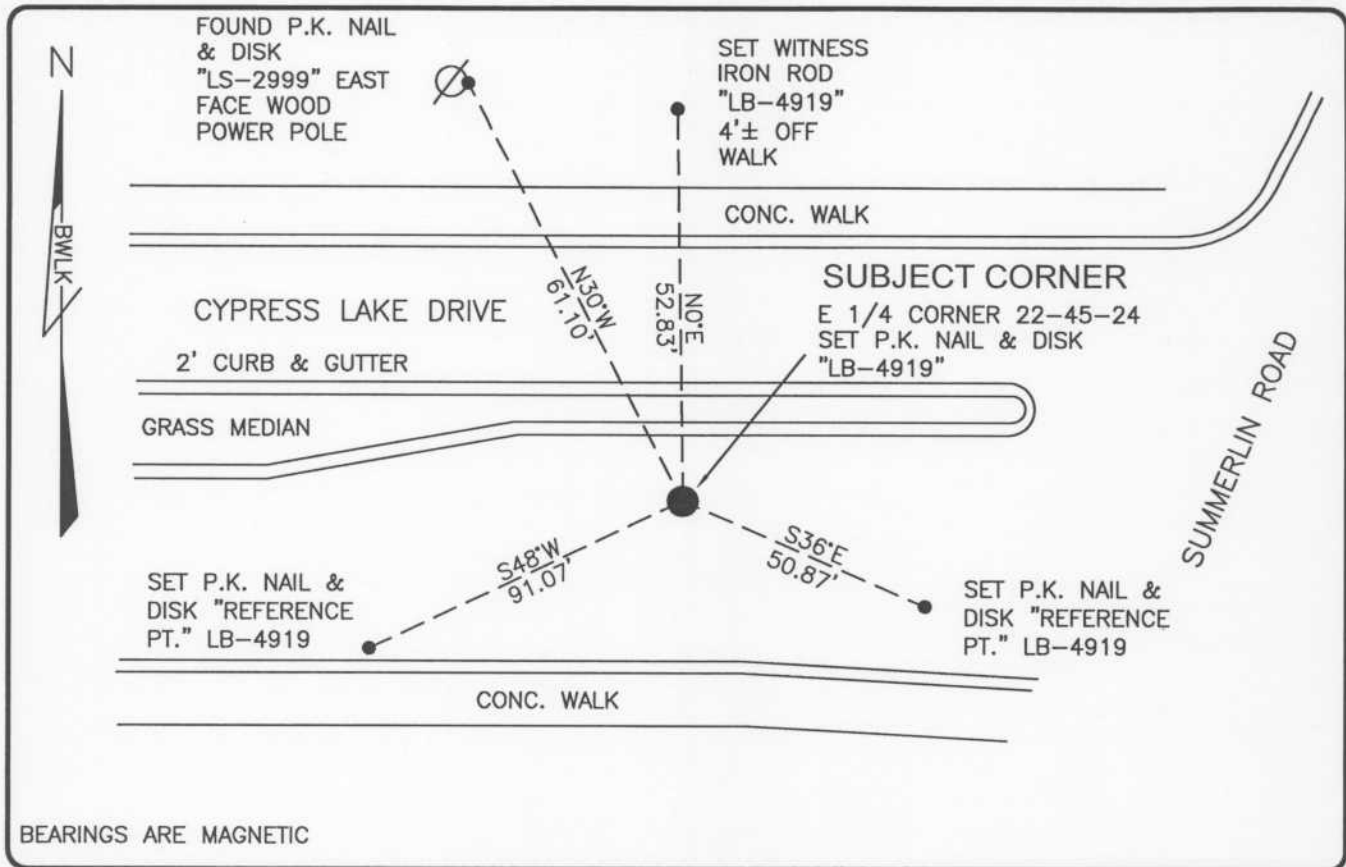


LAND CORNER RECORD

PUBLIC WORKS  
LEE COUNTY, FLORIDA

Address - 1500 Monroe St., Ft. Myers, Fla. 33901

Phone : (239) 479-8900



BEARINGS ARE MAGNETIC

COMMENTS:

ON 10-08-03 A BENT IRON ROD WAS RECOVERED AND RESET BY REFERENCES SHOWN ON CCR 68952. CORNER HAS SINCE BEEN DESTROYED BY ROAD CONSTRUCTION. CORNER AND REFERENCES WERE RESET ON 4-13-04 BASED ON EARLIER TIES.

CORNER DESCRIPTION

E1/4 Corner  
Section 22  
Township 45  
Range 24



HORIZONTAL POSITION INFORMATION

Florida West Zone, NAD 1983(1990 Adjustment)  
Northing(ft) 804173.59 Easting(ft) 692996.43  
Latitude 26°32'45.72480" Longitude 81°53'14.43184"  
Scale Factor 0.99994

EXISTING CERTIFIED CORNER RECORDS

Document No.	Date
<u>13133</u>	<u>12-01-81</u>
<u>68952</u>	<u>9-11-00</u>

The above documents are based on FDEP Bureau of Surveying and Mapping Record Information.

I hereby certify the monument and accessories shown above were field located on 4-13-04.

*Scott C. Whitaker*  
SCOTT C. WHITAKER  
Professional Surveyor and Mapper  
Florida Certificate No. 4324  
Date Signed 5-07-04

BEAN, WHITAKER, LUTZ & KAREH, INC. (LB 4919)  
13041 McGregor Boulevard  
Fort Myers, Florida 33919-5910  
Phone: (239) 481-1331

POINT NO. 5067

BLM REFERENCE NO. T45SR24E500340