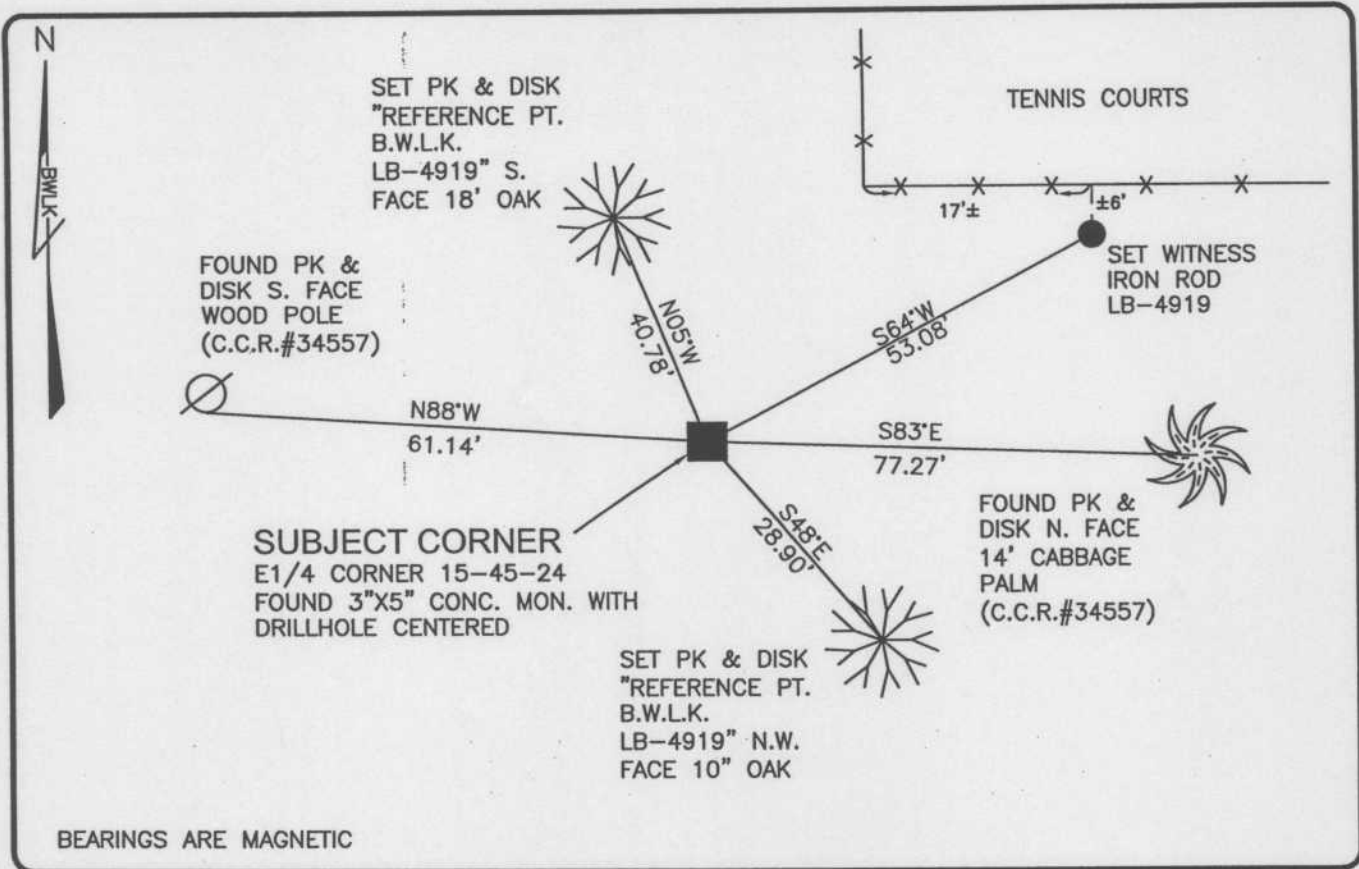


LAND CORNER RECORD

PUBLIC WORKS  
LEE COUNTY, FLORIDA

Address - 1500 Monroe St., Ft. Myers, Fla. 33901

Phone : (239) 479-8900



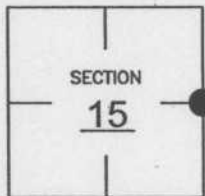
BEARINGS ARE MAGNETIC

COMMENTS:

CORNER RECOVERED AND VERIFIED BY REFERENCES AS SHOWN ON CCR'S 7355 & 34557.

CORNER DESCRIPTION

E1/4 Corner  
Section 15  
Township 45  
Range 24



HORIZONTAL POSITION INFORMATION

Florida West Zone, NAD 1983(1990 Adjustment)

Northing(ft) 809462.06 Easting(ft) 692903.85

Latitude 26°33'38.10333" Longitude 81°53'15.40022"

Scale Factor 0.99994

EXISTING CERTIFIED CORNER RECORDS

Document No.	Date
<u>7355</u>	<u>6-04-80</u>
<u>33698</u>	<u>6-30-89</u>
<u>34557</u>	<u>12-10-89</u>

The above documents are based on FDEP Bureau of Surveying and Mapping Record Information.

I hereby certify the monument and accessories shown above were field located on 3-08-04.

*Scott C. Whitaker*  
SCOTT C. WHITAKER  
Professional Surveyor and Mapper  
Florida Certificate No. 4324  
Date Signed 4-07-04

BEAN, WHITAKER, LUTZ & KAREH, INC. (LB 4919)  
13041 McGregor Boulevard  
Fort Myers, Florida 33919-5910  
Phone: (239) 481-1331

POINT NO. 6134

BLM REFERENCE NO. T45SR24E500440