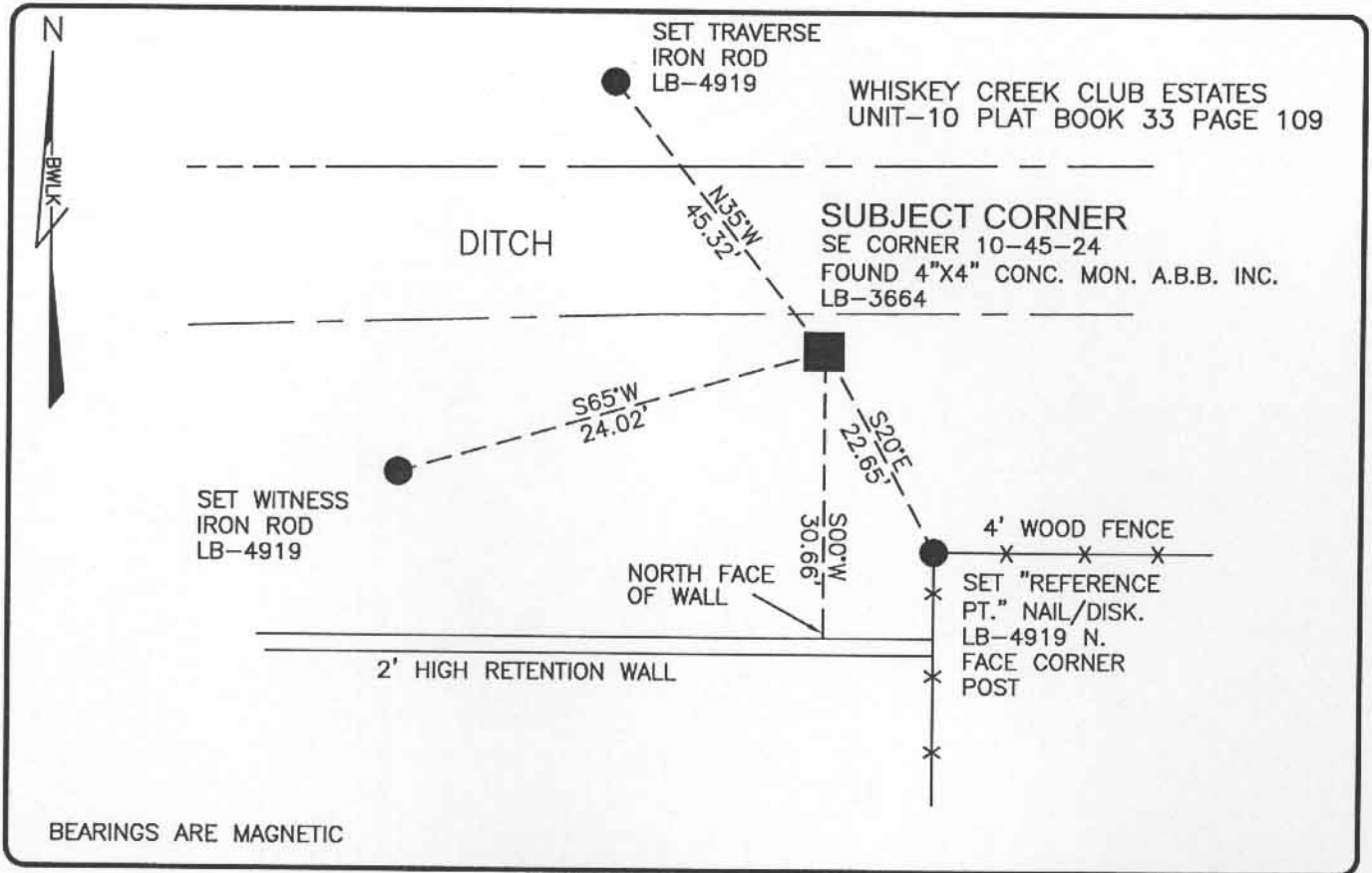


LAND CORNER RECORD

PUBLIC WORKS
LEE COUNTY, FLORIDA

Address - 1500 Monroe St., Ft. Myers, Fla. 33901

Phone : (239) 479-8900

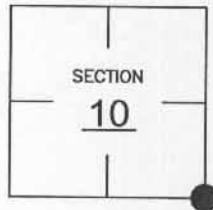


COMMENTS:

CORNER RECOVERED IS IN HARMONY WITH SUBDIVISION TIES AS SHOWN FOR WHISKEY CREEK CLUB ESTATES, UNIT-10, AS RECORDED IN PLAT BOOK 33 AT PAGE 109.

CORNER DESCRIPTION

SE Corner
Section 10
Township 45
Range 24



HORIZONTAL POSITION INFORMATION

Florida West Zone, NAD 1983(1990 Adjustment)

Northing(ft) 812122.42 Easting(ft) 692869.74

Latitude 26°34'04.45216" Longitude 81°53'15.75029"

Scale Factor 0.99994

EXISTING CERTIFIED CORNER RECORDS

Document No.	Date
NONE	NONE

The above documents are based on FDEP Bureau of Surveying and Mapping Record Information.

I hereby certify the monument and accessories shown above were field located on 10-23-03.

Scott C. Whitaker
SCOTT C. WHITAKER
Professional Surveyor and Mapper
Florida Certificate No. 4324
Date Signed 4-07-04

BEAN, WHITAKER, LUTZ & KAREH, INC. (LB 4919)
13041 McGregor Boulevard
Fort Myers, Florida 33919-5910
Phone: (239) 481-1331

POINT NO. 6020

BLM REFERENCE NO. T45SR24E500500