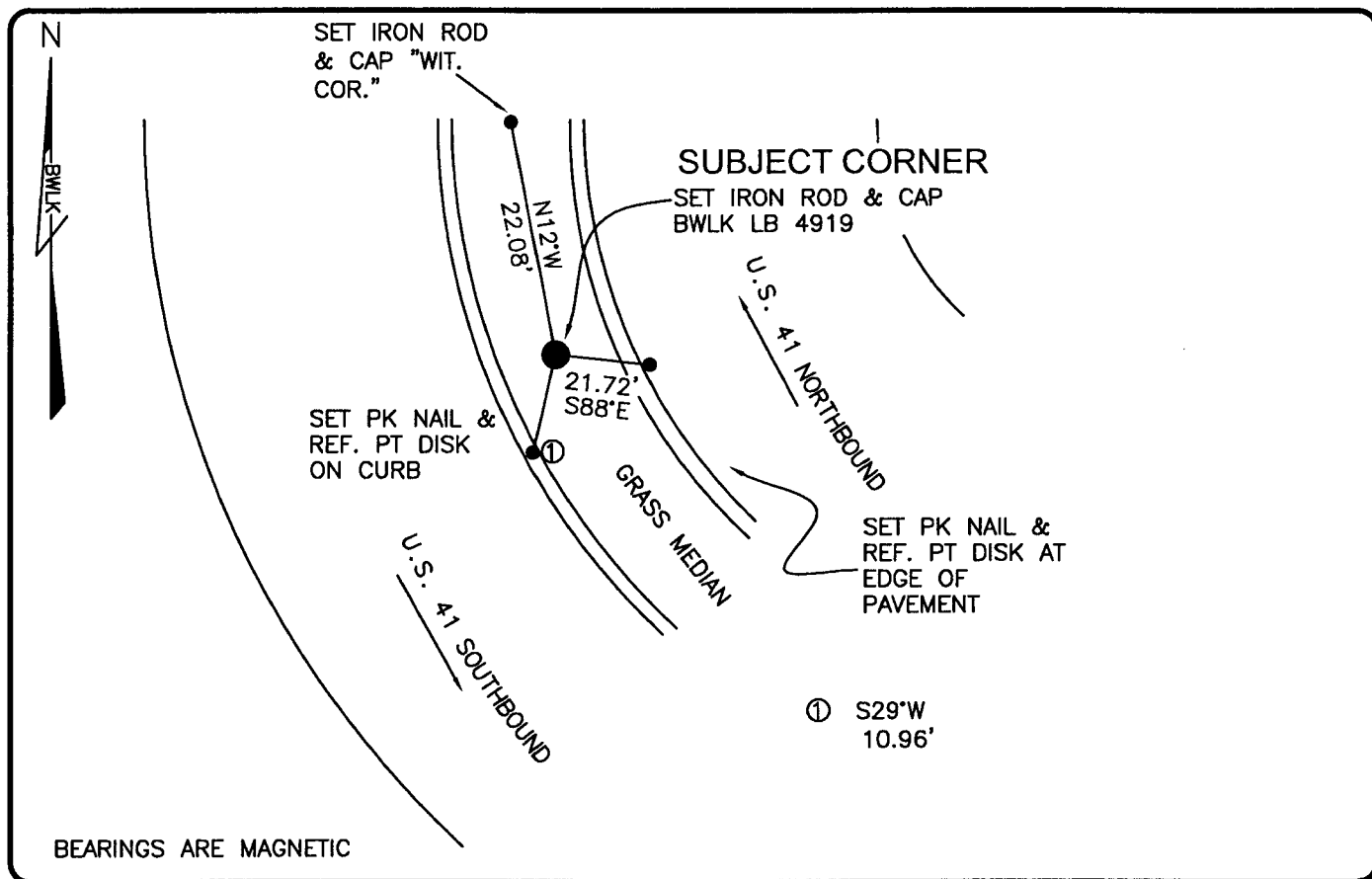


PUBLIC WORKS
LEE COUNTY, FLORIDA

Address - 1500 Monroe St., Ft. Myers, Fla. 33901

Phone : (239) 479-8900

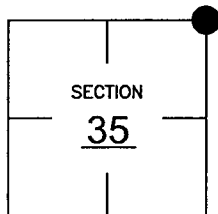


COMMENTS:

FND. ALUMINUM DISK LS 1797 IN 1990. CORNER AND REFERENCES HAVE SINCE BEEN DESTROYED. RESET CORNERS BY UTILIZING COORDINATE VALUES OBTAINED IN 1990 AND VERIFIED WITH HISTORICAL RECORDS.

CORNER DESCRIPTION

NE Corner
 Section 35
 Township 45
 Range 24



HORIZONTAL POSITION INFORMATION

Florida West Zone, NAD 1983(1990 Adjustment)
 Northing(ft) 796324.94 Easting(ft) 698364.10
 Latitude 26°31'27.94039" Longitude 81°52'15.41030"
 Scale Factor 0.99994

EXISTING CERTIFIED CORNER RECORDS

Document No.	Date
<u>18196</u>	<u>1-19-84</u>
<u>22122</u>	<u>10-24-85</u>
<u>36819</u>	<u>9-17-90</u>

The above documents are based on FDEP Bureau of Surveying and Mapping Record Information.

I hereby certify the monument and accessories shown above were field located on 2-02-04.

Scott C. Whitaker

SCOTT C. WHITAKER
 Professional Surveyor and Mapper
 Florida Certificate No. 4324
 Date Signed 2-23-04

BEAN, WHITAKER, LUTZ & KAREH, INC. (LB 4919)
 13041 McGregor Boulevard
 Fort Myers, Florida 33919-5910
 Phone: (239) 481-1331

POINT NO. 581

BLM REFERENCE NO. T45SR24E600200