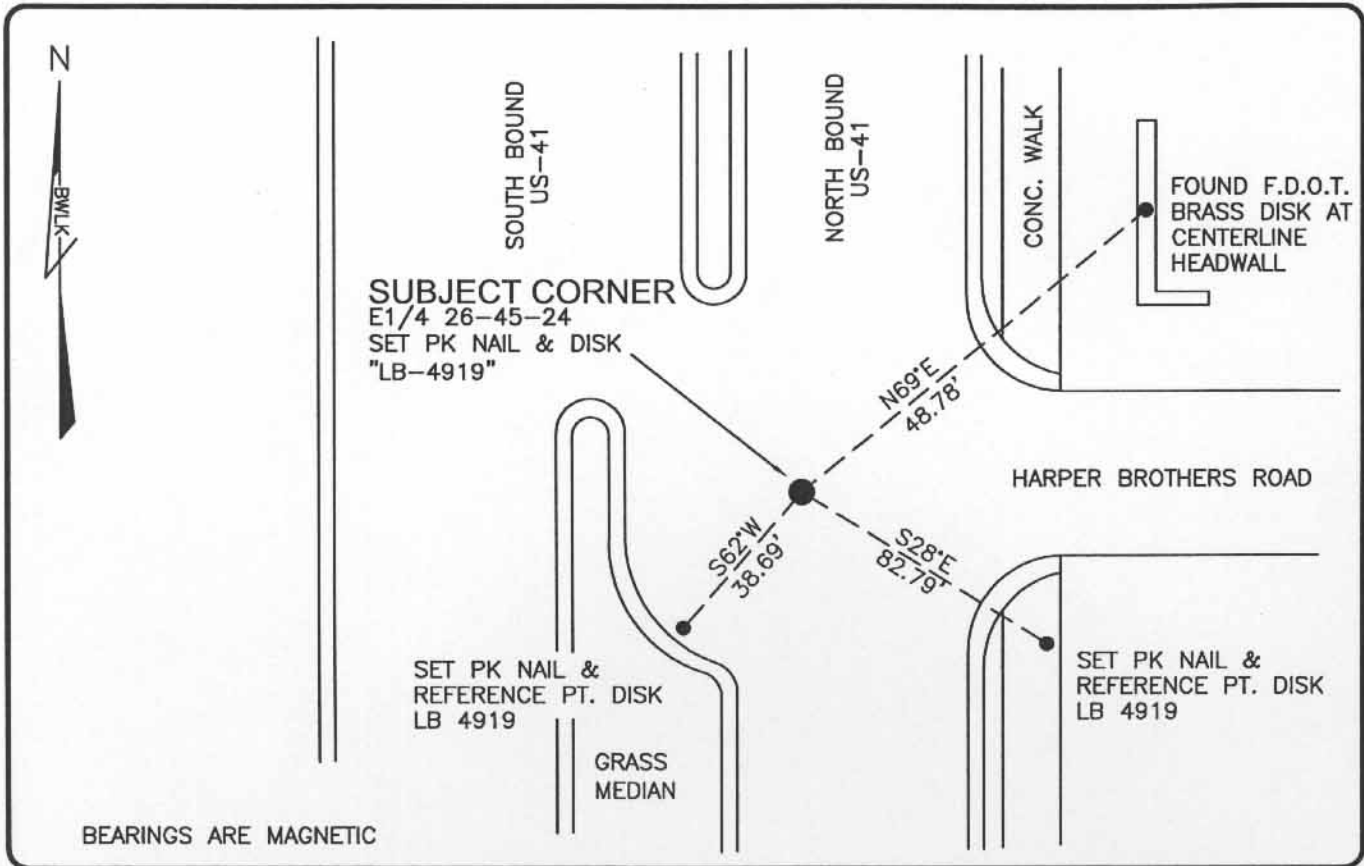


LAND CORNER RECORD

PUBLIC WORKS
LEE COUNTY, FLORIDA

Address - 1500 Monroe St., Ft. Myers, Fla. 33901

Phone : (239) 479-8900



BEARINGS ARE MAGNETIC

COMMENTS:

LOCATED RAILROAD SPIKE IN 1990. CORNER HAS SINCE BEEN DESTROYED BY ROAD CONSTRUCTION. RE-ESTABLISHED LOCATION OF CORNER BASED ON HISTORICAL RECORDS.

CORNER DESCRIPTION

E1/4 Corner
Section 26
Township 45
Range 24



HORIZONTAL POSITION INFORMATION

Florida West Zone, NAD 1983(1990 Adjustment)
 Northing(ft) 798957.03 Easting(ft) 698296.63
 Latitude 26d31'54.00969" Longitude 81d52'16.12400"
 Scale Factor 0.99994

EXISTING CERTIFIED CORNER RECORDS

Document No.	Date
NONE	NONE

The above documents are based on FDEP Bureau of Surveying and Mapping Record Information.

I hereby certify the monument and accessories shown above were field located on 3-26-04.

Scott C. Whitaker
 SCOTT C. WHITAKER
 Professional Surveyor and Mapper
 Florida Certificate No. 4324
 Date Signed 5-07-04

BEAN, WHITAKER, LUTZ & KAREH, INC. (LB 4919)
 13041 McGregor Boulevard
 Fort Myers, Florida 33919-5910
 Phone: (239) 481-1331

POINT NO. 575

BLM REFERENCE NO. T45SR24E600240